

MEIS1 Rabbit mAb

Catalog No: #49588

Package Size: #49588-1 50ul #49588-2 100ul

Orders: order@signalwayantibody.com

Support: tech@signalwayantibody.com

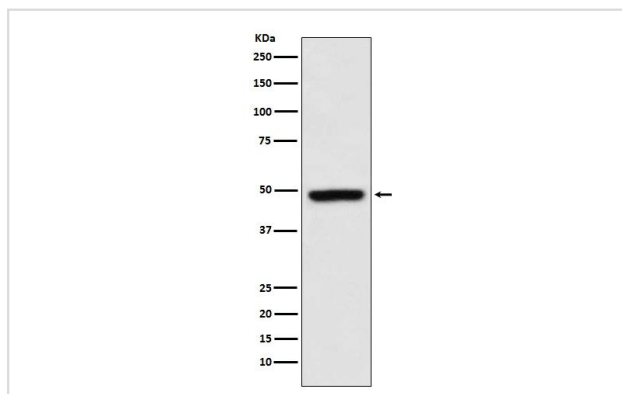
Description

Product Name	MEIS1 Rabbit mAb
Clone No.	JA13-26
Purification	Affinity-chromatography
Applications	WB,IP,FC
Species Reactivity	Hu, Ms, Rt
Immunogen Description	A synthesized peptide derived from human MEIS1
Other Names	Homeo box protein Meis1 antibody Homeobox protein Meis1 antibody Leukemogenic homolog protein antibody MEIS 1 antibody Meis homeo box 1 antibody Meis homeobox 1 antibody Meis1 antibody Meis1 mouse homolog antibody Meis1 myeloid ecotropic viral integration site 1 homolog antibody Meis1 myeloid ecotropic viral integration site 1 homolog mouse antibody MEIS1 protein antibody MEIS1_HUMAN antibody MGC43380 antibody Myeloid ecotropic viral integration site 1 homolog antibody WUGSC:H NH0444B04.1 antibody
Accession No.	Swiss-Prot#:O00470
Uniprot	O00470
GeneID	4211;
Calculated MW	47 kDa
Formulation	Rabbit IgG in phosphate buffered saline , pH 7.4, 150mM NaCl, 0.02% sodium azide and 50% glycerol.
Storage	Store at -20°C

Application Details

WB 1:1000~1:5000 IP 1:50 FC 1:50

Images



Western blot analysis of MEIS1 expression in K562 cell lysate

Background

MEIS proteins belong to the TALE (Three Amino Acid Loop Extension) homeobox containing transcription factor family. MEIS1 has been associated

with leukemogenesis and neuroblastoma.

Note: This product is for in vitro research use only