

PKC epsilon Rabbit mAb

Catalog No: #49589

Package Size: #49589-1 50ul #49589-2 100ul

Orders: order@signalwayantibody.com

Support: tech@signalwayantibody.com

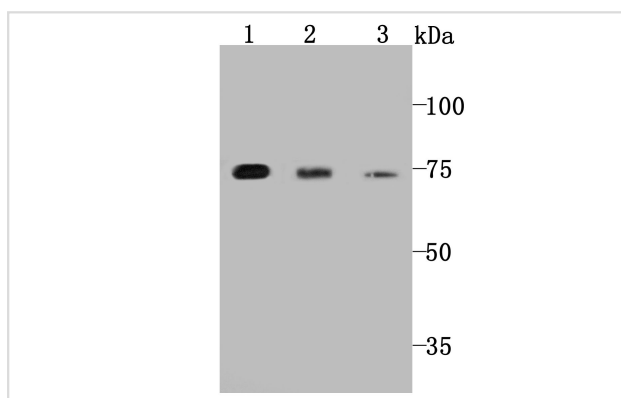
Description

| | |
|-----------------------|--|
| Product Name | PKC epsilon Rabbit mAb |
| Host Species | Recombinant Rabbit |
| Clonality | Monoclonal antibody |
| Clone No. | JA38-21 |
| Purification | ProA affinity purified |
| Applications | WB, ICC, IHC, FC |
| Species Reactivity | Hu, Ms, Rt |
| Immunogen Description | recombinant protein |
| Other Names | KPCE_HUMAN antibody MGC125656 antibody MGC125657 antibody nPKC epsilon antibody nPKC-epsilon antibody PKCE antibody Pkcea antibody PRKCE antibody Protein kinase C epsilon antibody Protein kinase C epsilon type antibody |
| Accession No. | Swiss-Prot#:Q02156 |
| Uniprot | Q02156 |
| GeneID | 5581; |
| Calculated MW | 84 kDa |
| Formulation | 1*TBS (pH7.4), 1%BSA, 40%Glycerol. Preservative: 0.05% Sodium Azide. |
| Storage | Store at -20°C |

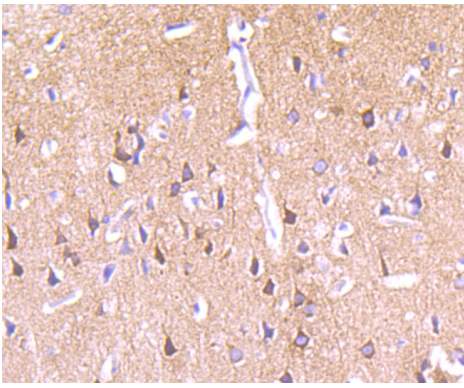
Application Details

WB: 1:500-1:1,000 IHC: 1:50-1:200 ICC: 1:50-1:200 FC: 1:50-1:100

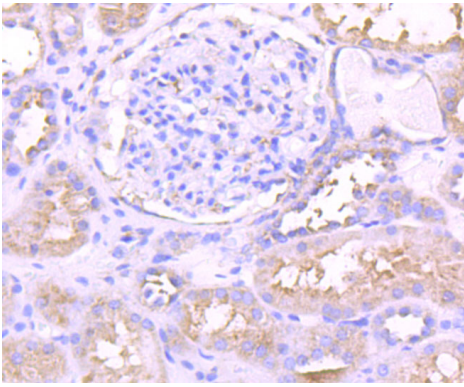
Images



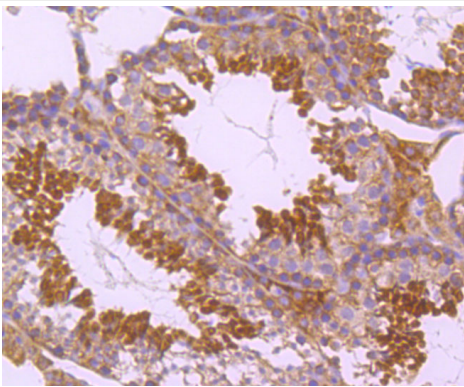
Western blot analysis of PKC epsilon on different cell lysate using anti-PKC epsilon antibody at 1/1,000 dilution.
Positive control $\Omega\frac{1}{2}\Omega\frac{1}{2}$
Lane1: Jurkat
Lane2: MCF-7
Lane3: HT-29



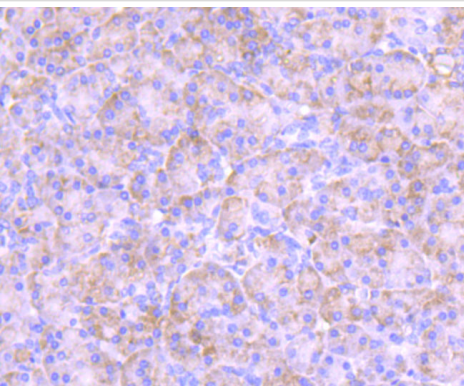
Immunohistochemical analysis of paraffin-embedded rat brain tissue using anti-PKC epsilon antibody. Counter stained with hematoxylin.



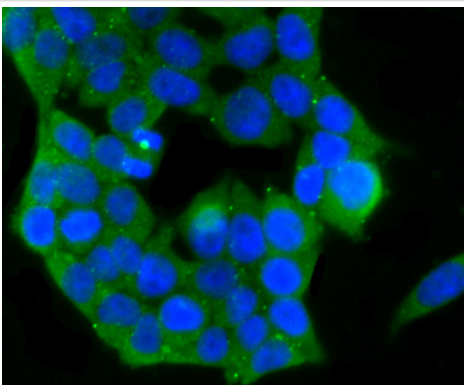
Immunohistochemical analysis of paraffin-embedded human kidney tissue using anti-PKC epsilon antibody. Counter stained with hematoxylin.



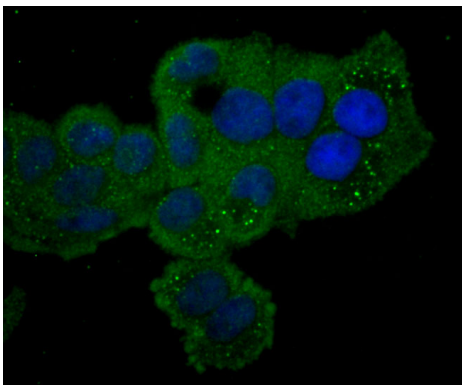
Immunohistochemical analysis of paraffin-embedded mouse testis tissue using anti-PKC epsilon antibody. Counter stained with hematoxylin.



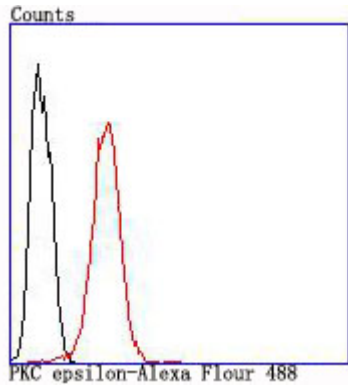
Immunohistochemical analysis of paraffin-embedded human pancreas tissue using anti-PKC epsilon antibody. Counter stained with hematoxylin.



ICC staining PKC epsilon in 293T cells (green). The nuclear counter stain is DAPI (blue). Cells were fixed in paraformaldehyde, permeabilised with 0.25% Triton X100/PBS.



ICC staining PKC epsilon in HeLa cells (green). The nuclear counter stain is DAPI (blue). Cells were fixed in paraformaldehyde, permeabilised with 0.25% Triton X100/PBS.



Flow cytometric analysis of SH-SY5Y cells with PKC epsilon antibody at 1/100 dilution (red) compared with an unlabelled control (cells without incubation with primary antibody; black).

Background

This is calcium-independent, phospholipid-dependent, serine- and threonine-specific enzyme. PKC is activated by diacylglycerol which in turn phosphorylates a range of cellular proteins. PKC also serves as the receptor for phorbol esters, a class of tumor promoters.

References

Note: This product is for in vitro research use only