

## IDH2 Rabbit mAb

Catalog No: #49596

Package Size: #49596-1 50ul #49596-2 100ul

Orders: order@signalwayantibody.com

Support: tech@signalwayantibody.com

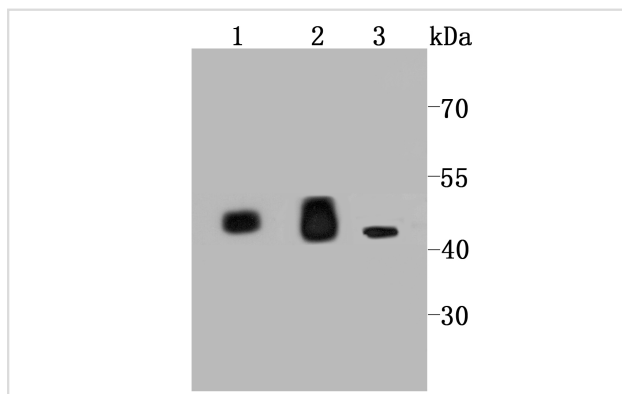
## Description

Product Name	IDH2 Rabbit mAb
Host Species	Recombinant Rabbit
Clonality	Monoclonal antibody
Clone No.	JA55-31
Purification	ProA affinity purified
Applications	WB, IHC, FC
Species Reactivity	Hu, Ms, Rt
Immunogen Description	recombinant protein
Other Names	D2HGA2 antibody ICD-M antibody IDH antibody IDH2 antibody IDHM antibody IDHP_HUMAN antibody IDP antibody IDPM antibody Isocitrate dehydrogenase [NADP], mitochondrial antibody Isocitrate dehydrogenase 2 (NADP+), mitochondrial antibody mNADP-IDH antibody NADP(+)-specific ICDH antibody Oxalosuccinate decarboxylase antibody
Accession No.	Swiss-Prot#:P48735
Uniprot	P48735
GeneID	3418;
Calculated MW	45 kDa
Formulation	1*TBS (pH7.4), 1%BSA, 40%Glycerol. Preservative: 0.05% Sodium Azide.
Storage	Store at -20°C

## Application Details

WB: 1:500-1:2,000 IHC: 1:50-1:200 FC: 1:50-1:100

## Images



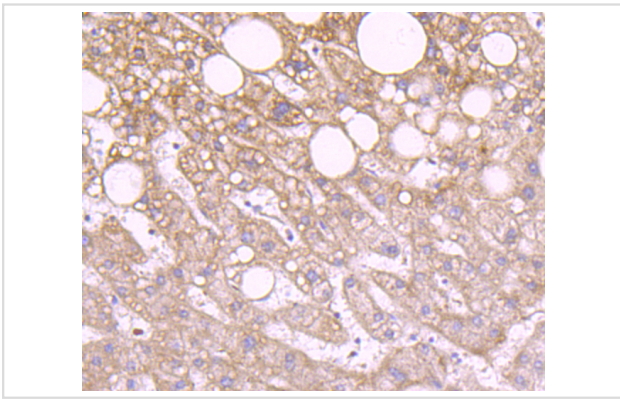
Western blot analysis of IDH2 on different cell lysate using anti-IDH2 antibody at 1/1,000 dilution.

Positive control

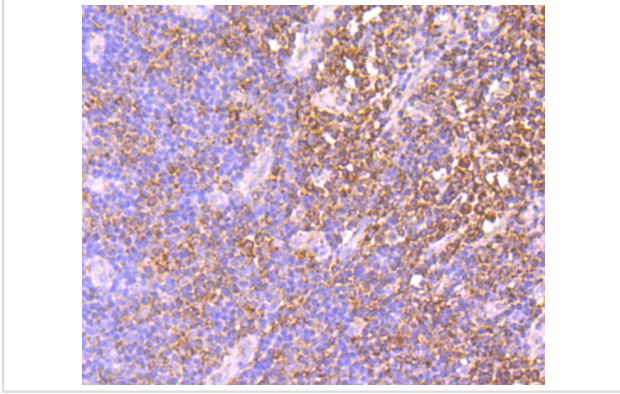
Line 1: Mouse heart

Line 2: Rat heart

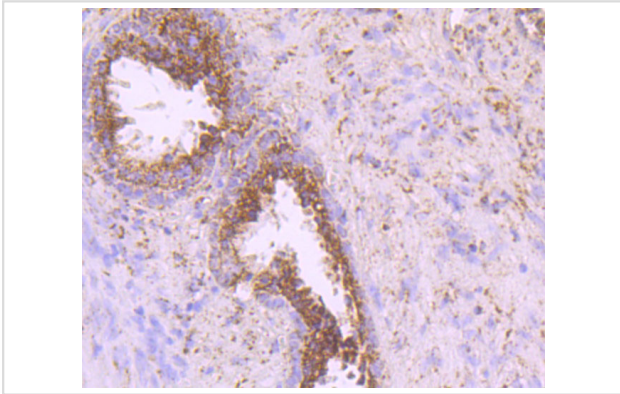
Line 3: 293T



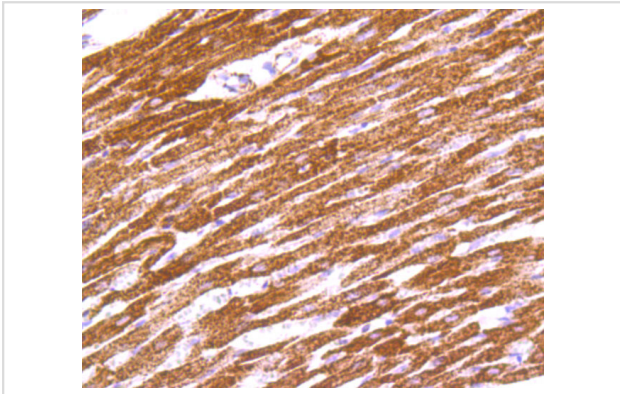
Immunohistochemical analysis of paraffin-embedded human liver tissue using anti-IDH2 antibody. Counter stained with hematoxylin.



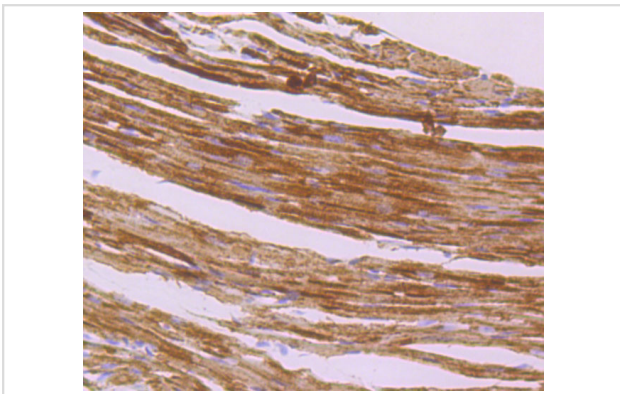
Immunohistochemical analysis of paraffin-embedded human tonsil tissue using anti-IDH2 antibody. Counter stained with hematoxylin.



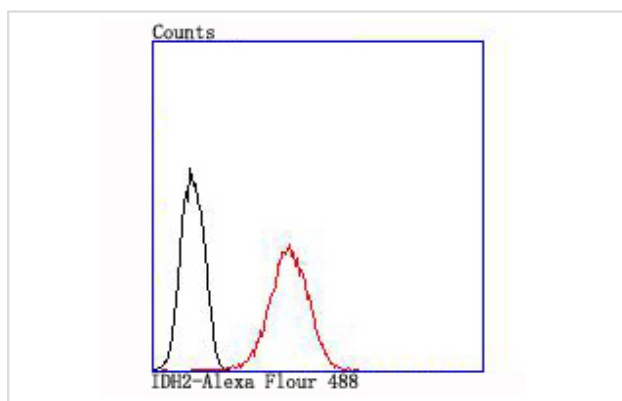
Immunohistochemical analysis of paraffin-embedded human prostate tissue using anti-IDH2 antibody. Counter stained with hematoxylin.



Immunohistochemical analysis of paraffin-embedded rat heart tissue using anti-IDH2 antibody. Counter stained with hematoxylin.



Immunohistochemical analysis of paraffin-embedded mouse heart tissue using anti-IDH2 antibody. Counter stained with hematoxylin.



Flow cytometric analysis of MCF-7 cells with IDH2 antibody at 1/100 dilution (red) compared with an unlabelled control (cells without incubation with primary antibody; black).

## Background

IDH2 (isocitrate dehydrogenase 2 (NADP+), mitochondrial), also designated NADP+-specific ICDH; isocitrate dehydrogenase, mitochondrial; and oxalosuccinate decarboxylase, is a 452 amino acid enzyme encoded by the human gene IDH2. IDH2 belongs to the isocitrate and isopropylmalate dehydrogenases family and contains two nucleotide binding regions. IDH2 is involved in the reduction of NADP+ to NADPH and maintains the supply of glutathione (GSH) in mitochondria. It is believed to play a role in intermediary metabolism and energy production. IDH2 also tightly associates with the pyruvate dehydrogenase complex. IDH2 is found in the mitochondrion as a homodimer and can bind one magnesium or manganese ion per subunit.

## References

Note: This product is for in vitro research use only