

DNA Polymerase beta Rabbit mAb

Catalog No: #49605

Package Size: #49605-1 50ul #49605-2 100ul

Orders: order@signalwayantibody.com

Support: tech@signalwayantibody.com

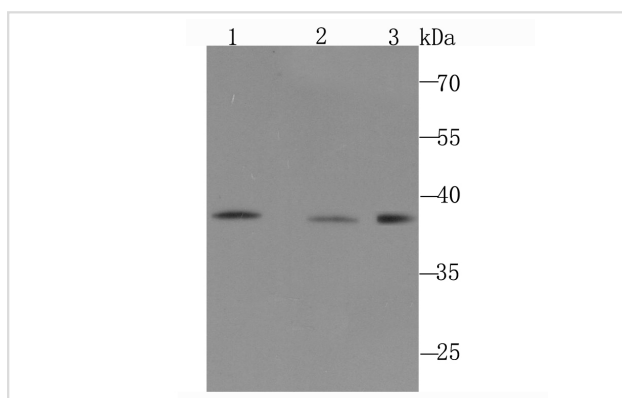
Description

| | |
|-----------------------|--|
| Product Name | DNA Polymerase beta Rabbit mAb |
| Host Species | Recombinant Rabbit |
| Clonality | Monoclonal antibody |
| Clone No. | JM93-12 |
| Purification | ProA affinity purified |
| Applications | WB,IHC,IP,ICC |
| Species Reactivity | Hu, Ms, Rt, Zebrafish |
| Immunogen Description | Recombinant protein |
| Other Names | DNA directed DNA polymerase beta antibody DNA pol beta antibody DNA polymerase beta antibody DNA polymerase beta subunit antibody DPOLB_HUMAN antibody MGC125976 antibody Pol B antibody Pol beta antibody POLB antibody Polymerase (DNA directed) beta antibody |
| Accession No. | Swiss-Prot#:P06746 |
| Uniprot | P06746 |
| GeneID | 5423; |
| Calculated MW | 38 kDa |
| Formulation | 1*TBS (pH7.4), 1%BSA, 40%Glycerol. Preservative: 0.05% Sodium Azide. |
| Storage | Store at -20°C |

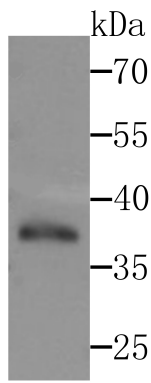
Application Details

WB: 1:500 IHC: 1:50-1:200 ICC: 1:20-1:50 IP: 1:10-1:20

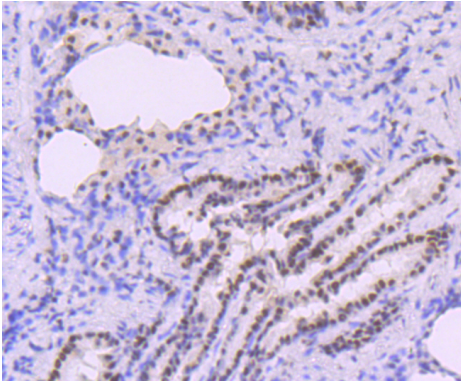
Images



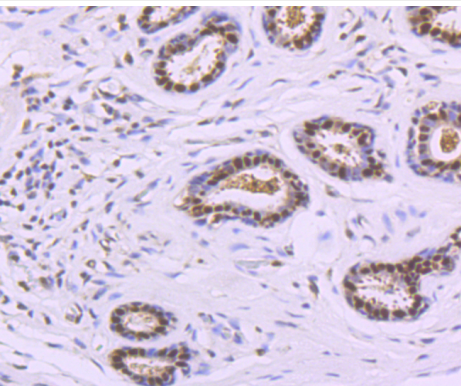
Western blot analysis of DNA Polymerase beta on different cell lysate using anti-DNA Polymerase beta antibody at 1/1,000 dilution. Positive control is shown in Lane 1. Lane 2: NIH-3T3 Lane 3: A431



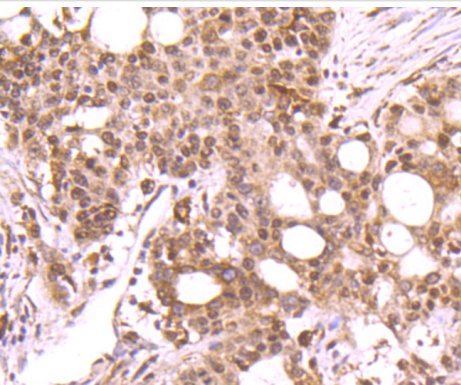
Western blot analysis of DNA Polymerase beta on Zebrafish tissue lysates using anti-DNA Polymerase beta antibody at 1/200 dilution.



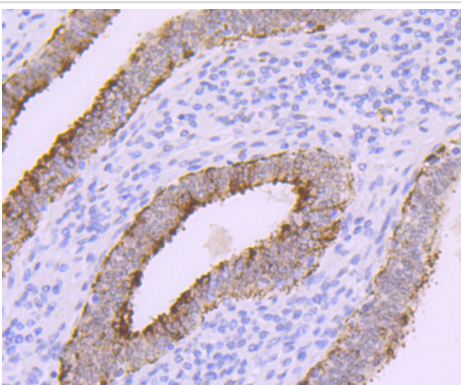
Immunohistochemical analysis of paraffin-embedded rat lung tissue using anti-DNA Polymerase beta antibody. Counter stained with hematoxylin.



Immunohistochemical analysis of paraffin-embedded human breast cancer tissue using anti-DNA Polymerase beta antibody. Counter stained with hematoxylin.



Immunohistochemical analysis of paraffin-embedded human stomach cancer tissue using anti-DNA Polymerase beta antibody. Counter stained with hematoxylin.



Immunohistochemical analysis of paraffin-embedded human uterus tissue using anti-DNA Polymerase beta antibody. Counter stained with hematoxylin.

References

Note: This product is for in vitro research use only