

## ETS1 Rabbit mAb

Catalog No: #49617

Package Size: #49617-1 50ul #49617-2 100ul

Orders: order@signalwayantibody.com

Support: tech@signalwayantibody.com

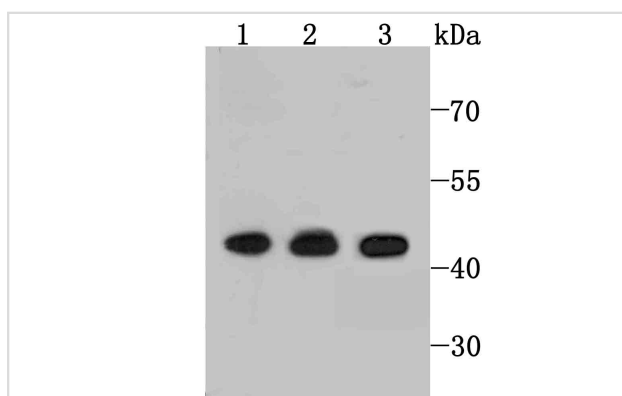
## Description

Product Name	ETS1 Rabbit mAb
Host Species	Recombinant Rabbit
Clonality	Monoclonal antibody
Clone No.	JM92-32
Purification	ProA affinity purified
Applications	WB, IHC, FC
Species Reactivity	Hu, Ms
Immunogen Description	Recombinant protein
Other Names	Avian erythroblastosis virus E26 (v ets) oncogene homolog 1 antibody C ets 1 protein antibody c-ets-1 antibody ETS 1 antibody Ets protein antibody ETS proto-oncogene 1, transcription factor antibody ETS1 antibody ETS1 oncogene antibody ETS1 protein antibody ETS1_HUMAN antibody EWSR 2 antibody EWSR2 antibody FLJ10768 antibody Oncogene ETS1 antibody P54 antibody Protein C-ets-1 antibody v ets avian erythroblastosis virus E2 oncogene homolog antibody v ets avian erythroblastosis virus E2 oncogene homolog 1 antibody v ets avian erythroblastosis virus E26 oncogene homolog 1 antibody v ets erythroblastosis virus E26 oncogene homolog 1 antibody v-ets erythroblastosis virus E26 oncogene homolog 1 antibody
Accession No.	Swiss-Prot#:P14921
Uniprot	P14921
GeneID	2113;
Calculated MW	50 kDa
Formulation	1*TBS (pH7.4), 1%BSA, 40%Glycerol. Preservative: 0.05% Sodium Azide.
Storage	Store at -20°C

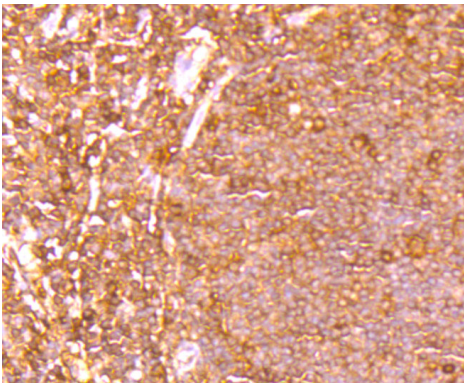
## Application Details

WB: 1:500-1:2,000 IHC: 1:50-1:200 FC: 1:50-1:100

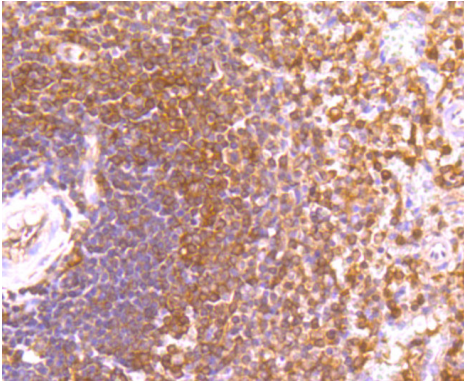
## Images



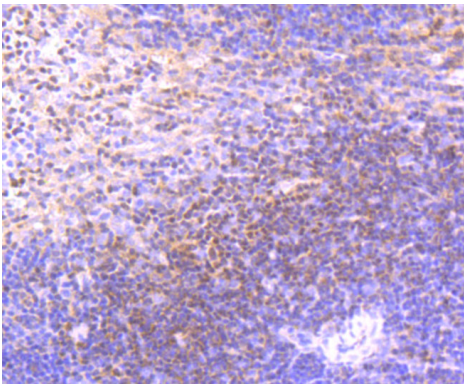
Western blot analysis of ETS1 on different cell using anti-ETS1 antibody at 1/1,000 dilution. Positive control  $\Omega\frac{1}{2}\Omega\frac{1}{2}$   
 Line1: Jurkat  
 Line2: K562  
 Line3: HepG2



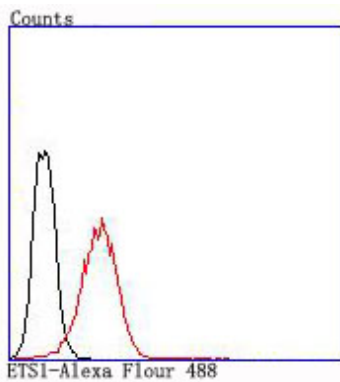
Immunohistochemical analysis of paraffin-embedded human tonsil tissue using anti-ETS1 antibody. Counter stained with hematoxylin.



Immunohistochemical analysis of paraffin-embedded human spleen tissue using anti-ETS1 antibody. Counter stained with hematoxylin.



Immunohistochemical analysis of paraffin-embedded mouse spleen tissue using anti-ETS1 antibody. Counter stained with hematoxylin.



Flow cytometric analysis of Jurkat cells with ETS1 antibody at 1/100 dilution (red) compared with an unlabelled control (cells without incubation with primary antibody; black).

## Background

Ets-1 is the prototype member of a family of genes identified on the basis of homology to the v-Ets oncogene isolated from the E26 erythroblastosis virus. This family of genes currently includes Ets-1, Ets-2, Erg-1-3, Elk-1, Elf-1, Elf-5, NERF, PU.1, PEA3, ERM, FEV, ER81, Fli-1, TEL, Spi-B, ESE-1, ESE-3A, Net, ABT1 and ERF. Members of the Ets gene family exhibit varied patterns of tissue expression, and share a highly conserved carboxy terminal domain containing a sequence related to the SV40 large T antigen nuclear localization signal sequence. This conserved domain is essential for Ets-1 binding to DNA and is likely to be responsible for the DNA binding activity of all members of the Ets gene family. Several of these proteins have been shown to recognize similar motifs in DNA that share a centrally located 5'-GGAA-3' element. Evidence indicates that the DNA binding activity by Ets-1 is regulated at the level of phosphorylation.

## References

---

Note: This product is for in vitro research use only