

Protein C Rabbit mAb

Catalog No: #49622

Package Size: #49622-1 50ul #49622-2 100ul

Orders: order@signalwayantibody.comSupport: tech@signalwayantibody.com

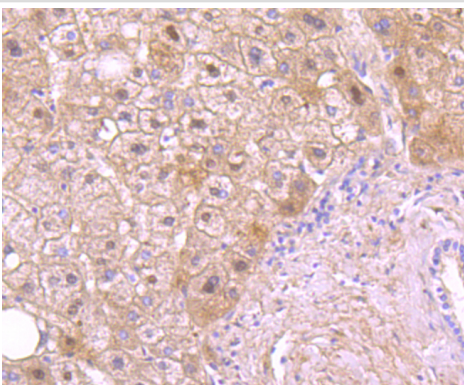
Description

Product Name	Protein C Rabbit mAb
Host Species	Recombinant Rabbit
Clonality	Monoclonal antibody
Clone No.	JM93-61
Purification	ProA affinity purified
Applications	WB, ICC, IHC
Species Reactivity	Hu
Immunogen Description	recombinant protein
Accession No.	Swiss-Prot#:P04070
Uniprot	P04070
GeneID	5624;
Calculated MW	52 kDa
Formulation	1*TBS (pH7.4), 1%BSA, 40%Glycerol. Preservative: 0.05% Sodium Azide.
Storage	Store at -20°C

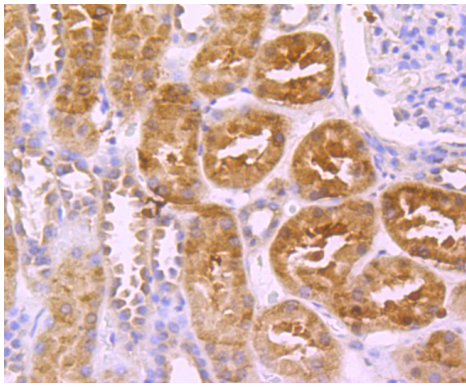
Application Details

WB: 1:500 IHC: 1:50-1:200 ICC: 1:50-1:200

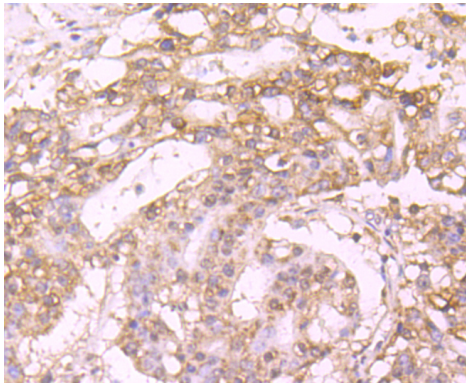
Images



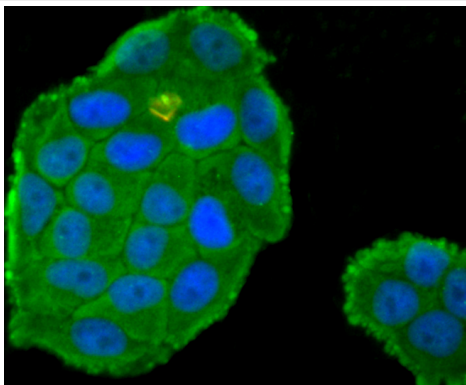
Immunohistochemical analysis of paraffin-embedded human liver tissue using anti-Protein C antibody. Counter stained with hematoxylin.



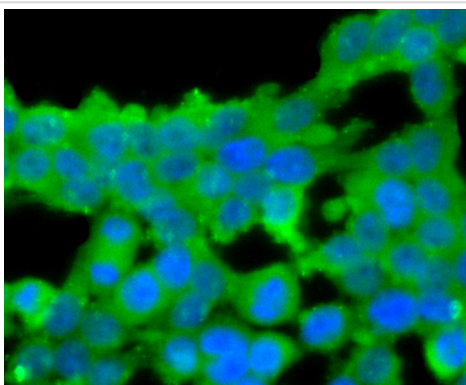
Immunohistochemical analysis of paraffin-embedded human kidney tissue using anti-Protein C antibody. Counter stained with hematoxylin.



Immunohistochemical analysis of paraffin-embedded human stomach cancer tissue using anti-Protein C antibody. Counter stained with hematoxylin.



ICC staining Protein C in HeLa cells (green). The nuclear counter stain is DAPI (blue). Cells were fixed in paraformaldehyde, permeabilised with 0.25% Triton X100/PBS.



ICC staining Protein C in 293T cells (green). The nuclear counter stain is DAPI (blue). Cells were fixed in paraformaldehyde, permeabilised with 0.25% Triton X100/PBS.

Background

Protein C is a vitamin K-dependent plasma protein that is produced in the liver and made up of two polypeptide chains. It is an important anti-coagulant activated by Thrombin bound to an endothelial surface receptor and it enzymatically cleaves activated forms of Factors V and VIII, dest? inflammatory blood coagulation. Protein C is similar to the prothrombin group of blood coagulation factors in its primary structure. Normal protein C concentration in human plasma is approximately 1-3 ng / ml and the proenzyme concentration is approximately 3 µg / ml. Protein C deficiency is associated with inherited thrombophilia, a rare genetic disorder that predisposes affected individuals to venous thrombosis and habitual abortion.

References

Note: This product is for in vitro research use only