

ACE Rabbit mAb

Catalog No: #49627

Package Size: #49627-1 50ul #49627-2 100ul

Orders: order@signalwayantibody.comSupport: tech@signalwayantibody.com

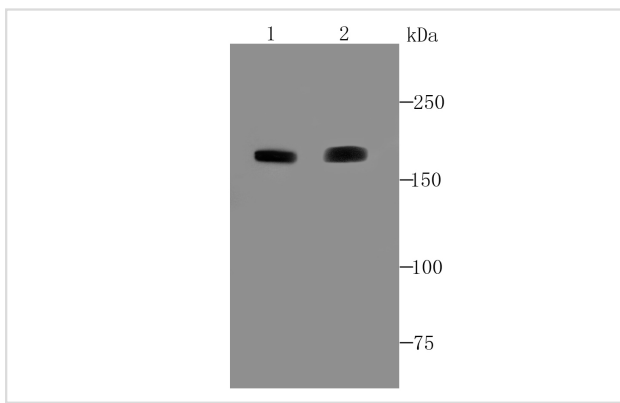
Description

Product Name	ACE Rabbit mAb
Host Species	Recombinant Rabbit
Clonality	Monoclonal antibody
Clone No.	JM59-32
Purification	ProA affinity purified
Applications	WB, IHC, FC
Species Reactivity	Hu, Ms
Immunogen Description	recombinant protein
Other Names	ACE 1 antibody ACE antibody ACE T antibody ACE_HUMAN antibody ACE1 antibody Angiotensin converting enzyme somatic isoform antibody Angiotensin converting enzyme testis specific isoform antibody Angiotensin I converting enzyme 1 antibody Angiotensin I converting enzyme antibody Angiotensin I converting enzyme peptidyl dipeptidase A 1 antibody angiotensin I converting enzyme peptidyl-dipeptidase A 1 transcript antibody Angiotensin-converting enzyme antibody Carboxycathepsin antibody CD 143 antibody CD143 antibody CD143 antigen antibody DCP 1 antibody DCP antibody DCP1 antibody Dipeptidyl carboxypeptidase 1 antibody Dipeptidyl carboxypeptidase I antibody Kininase II antibody MGC26566 antibody MVCD3 antibody Peptidase P antibody Peptidyl dipeptidase A antibody soluble form antibody Testicular ECA antibody
Accession No.	Swiss-Prot#:P12821
Uniprot	P12821
GeneID	1636;
Calculated MW	160 kDa
Formulation	1*TBS (pH7.4), 1%BSA, 40%Glycerol. Preservative: 0.05% Sodium Azide.
Storage	Store at -20°C

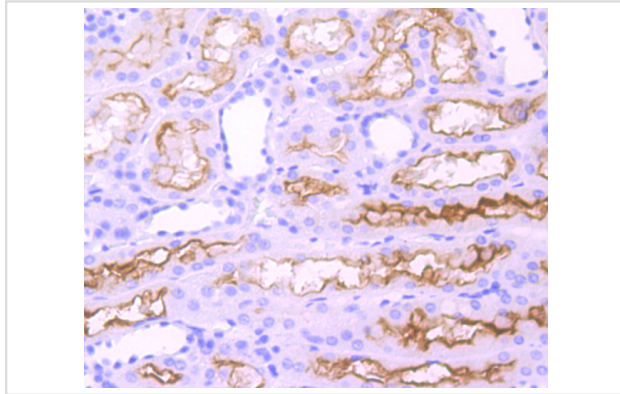
Application Details

WB: 1:500-1:2,000 IHC: 1:100-1:500FC: 1:50-1:100

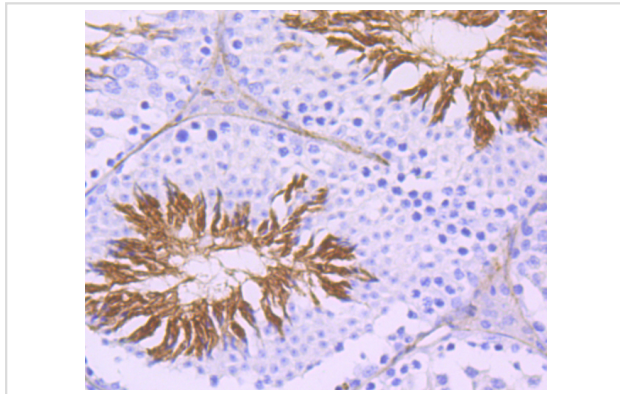
Images



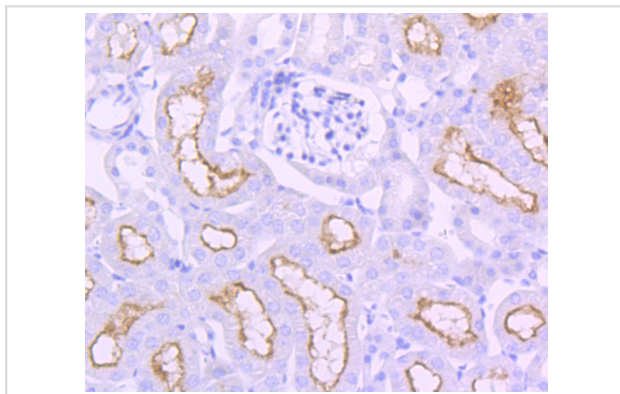
Western blot analysis of ACE on human lung (1) and mouse kidney (2) cell lysate using anti-ACE antibody at 1/1,000 dilution.



Immunohistochemical analysis of paraffin-embedded human kidney tissue using anti-ACE antibody. Counter stained with hematoxylin.



Immunohistochemical analysis of paraffin-embedded mouse testis tissue using anti-ACE antibody. Counter stained with hematoxylin.



Immunohistochemical analysis of paraffin-embedded mouse kidney tissue using anti-ACE antibody. Counter stained with hematoxylin.

Background

Angiotensin-converting enzyme (ACE) is a carboxy-terminal dipeptidyl exo-peptidase that converts Angiotensin I to the potent vasopressive hormone, Angiotensin II. There are two isoforms of ACE, the pulmonary ACEP and the testicular ACET. ACEP is a glycoprotein expressed in vascular endothelial cells of the lung, liver, adrenal cortex, pancreas, kidney and spleen. The ACET isoform is expressed exclusively in adult testis by developing sperm cells, specifically, late pachytene spermatocytes. Additionally, ACE inactivates bradykinin, a vasodepressor peptide, and is involved in fluid/electrolyte homeostasis. Although it bears significant sequence homology to ACE, ACE2 shows a more restricted pattern of expression. ACE is expressed ubiquitously throughout the vasculature while ACE2 is expressed only in cardiac, renal and testicular cells.

References

Note: This product is for in vitro research use only