

BRMS-1 Polyclonal Antibody

Catalog No: #41571

Package Size: #41571-1 50ul #41571-2 100ul

Orders: order@signalwayantibody.comSupport: tech@signalwayantibody.com

Description

| | |
|-----------------------|---|
| Product Name | BRMS-1 Polyclonal Antibody |
| Host Species | Rabbit |
| Clonality | Polyclonal |
| Purification | The antibody was affinity-purified from rabbit antiserum by affinity-chromatography using epitope-specific immunogen. |
| Applications | WB ELISA |
| Species Reactivity | Hu Ms Rt |
| Specificity | BRMS-1 Polyclonal Antibody detects endogenous levels of BRMS-1 protein. |
| Immunogen Type | peptide |
| Immunogen Description | Synthesized peptide derived from the C-terminal region of human BRMS-1. |
| Target Name | BRMS-1 |
| Other Names | BRMS1; Breast cancer metastasis-suppressor 1 |
| Accession No. | Swiss-Prot: Q9HCU9NCBI Gene ID: 25855 |
| Uniprot | Q9HCU9 |
| GeneID | 25855; |
| SDS-PAGE MW | 28kd |
| Concentration | 1mg/ml |
| Formulation | Liquid in PBS containing 50% glycerol, 0.5% BSA and 0.02% sodium azide. |
| Storage | Store at -20°C/1 year |

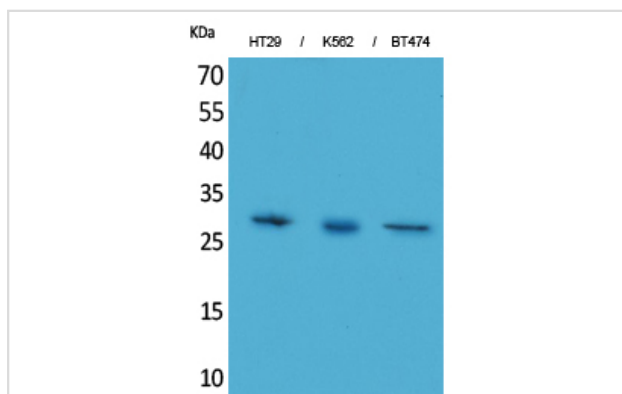
Application Details

Western Blot: 1/500 - 1/2000.

ELISA: 1/20000.

Not yet tested in other applications.

Images



Western Blot analysis of HT29 K562 BT474 cells using BRMS-1 Polyclonal Antibody

Note: This product is for in vitro research use only