

gamma Synuclein Rabbit mAb

Catalog No: #49636

Package Size: #49636-1 50ul #49636-2 100ul

Orders: order@signalwayantibody.comSupport: tech@signalwayantibody.com

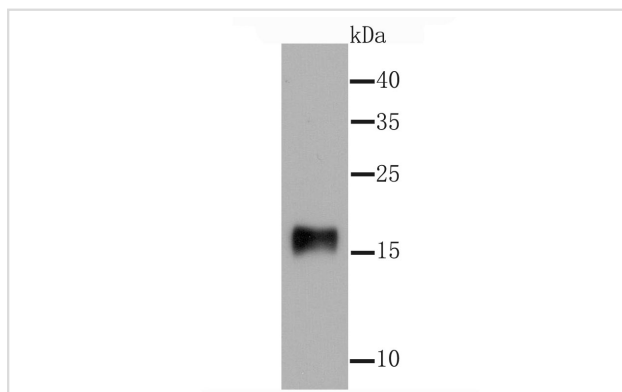
Description

Product Name	gamma Synuclein Rabbit mAb
Host Species	Recombinant Rabbit
Clonality	Monoclonal antibody
Clone No.	JM90-32
Purification	ProA affinity purified
Applications	WB, ICC, IHC, IP, FC
Species Reactivity	Hu, Rt
Immunogen Description	recombinant protein
Other Names	BCSG1 antibody Breast cancer specific gene 1 protein antibody Breast cancer specific protein 1 antibody Breast cancer-specific gene 1 protein antibody Gamma synuclein antibody Gamma-synuclein antibody Persyn antibody PRSN antibody SNCG antibody SR antibody Synoretin antibody Synuclein gamma antibody synuclein, gamma (breast cancer-specific protein 1) antibody SYUG_HUMAN antibody
Accession No.	Swiss-Prot#:O76070
Uniprot	O76070
GeneID	6623;
Calculated MW	16 kDa
Formulation	1*TBS (pH7.4), 1%BSA, 40%Glycerol. Preservative: 0.05% Sodium Azide.
Storage	Store at -20°C

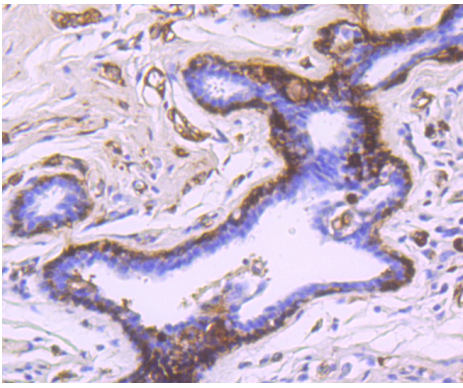
Application Details

WB: 1:500-1:2,000 IHC: 1:50-1:200 ICC: 1:50-1:200FC: 1:50-1:100

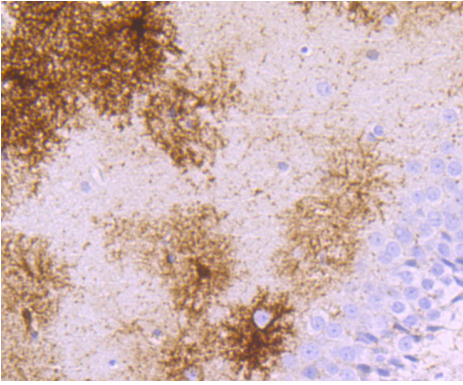
Images



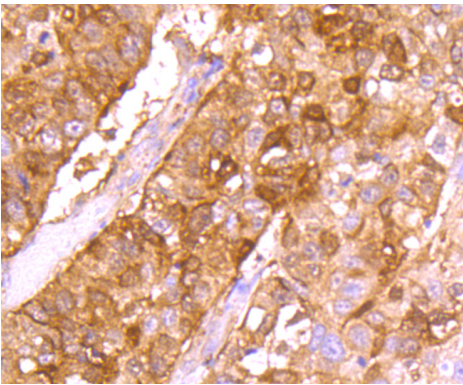
Western blot analysis of gamma Synuclein on rat kidney tissue lysate using anti-gamma Synuclein antibody at 1/1,000 dilution.



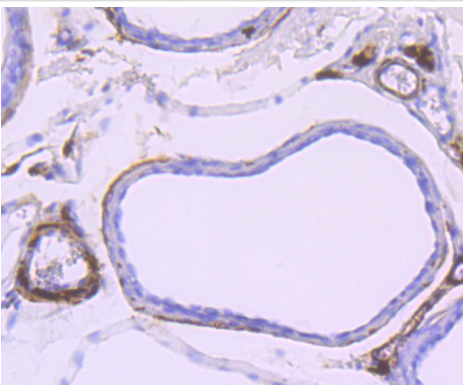
Immunohistochemical analysis of paraffin-embedded human breast cancer tissue using anti-gamma Synuclein antibody. Counter stained with hematoxylin.



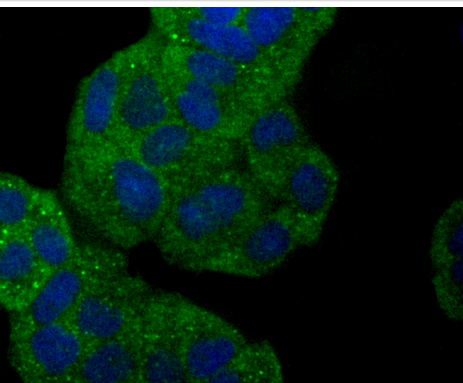
Immunohistochemical analysis of paraffin-embedded rat brain tissue using anti-gamma Synuclein antibody. Counter stained with hematoxylin.



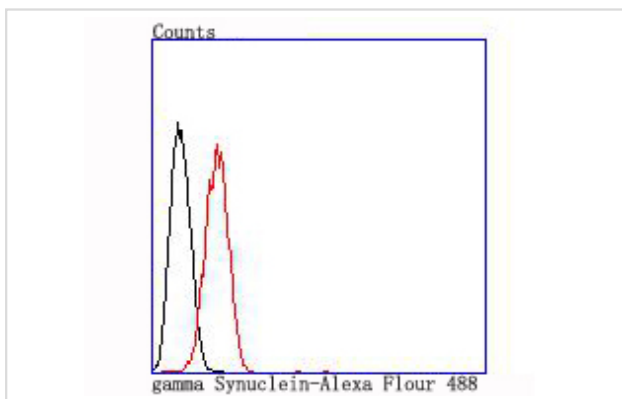
Immunohistochemical analysis of paraffin-embedded human lung cancer tissue using anti-gamma Synuclein antibody. Counter stained with hematoxylin.



Immunohistochemical analysis of paraffin-embedded rat bladder tissue using anti-gamma Synuclein antibody. Counter stained with hematoxylin.



ICC staining gamma Synuclein in Hela cells (green). The nuclear counter stain is DAPI (blue). Cells were fixed in paraformaldehyde, permeabilised with 0.25% Triton X100/PBS.



Flow cytometric analysis of Hela cells with gamma Synuclein antibody at 1/100 dilution (red) compared with an unlabelled control (cells without incubation with primary antibody; black).

Background

The synucleins, including α -synuclein (also designated NACP for nonamyloid component precursor), β -synuclein (also designated PNP 14 for phospho-neuroprotein 14) and γ -synuclein (also designated persyn or BCSG1 for breast cancer-specific gene 1) are presynaptic proteins abundant in neurons. Synucleins are predominantly expressed in the brain and are speculated to be involved in synaptic regulation and neuronal plasticity. α -Synuclein, identified as a component of Alzheimer's disease amyloid plaques, is localized to neuronal cell bodies and synapses. Coordinate expression of α -synuclein and β -synuclein may be important during hematopoietic cell differentiation. A mutant form of α -synuclein is found in patients with early onset Parkinson's disease. γ -Synuclein is associated with axonal pathology in Parkinson's disease.

References

Note: This product is for in vitro research use only