

MLKL (phospho S345) Rabbit mAb

Catalog No: #13433

Package Size: #13433-1 50ul #13433-2 100ul

Orders: order@signalwayantibody.comSupport: tech@signalwayantibody.com

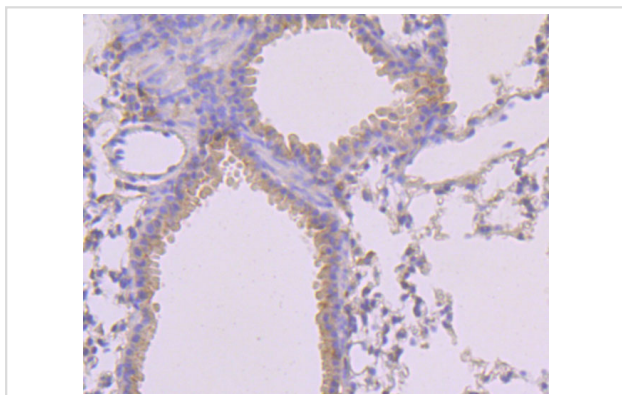
Description

Product Name	MLKL (phospho S345) Rabbit mAb
Host Species	Rabbit
Clonality	Monoclonal
Clone No.	JM92-37
Purification	ProA affinity purified
Applications	IHC
Species Reactivity	Ms
Immunogen Description	Synthetic phospho-peptide corresponding to residues surrounding Ser345 of human MLKL.
Other Names	9130019I15Rik antibody FLJ34389 antibody hMLKL antibody Mixed lineage kinase domain like antibody Mixed lineage kinase domain like protein antibody Mixed lineage kinase domain like pseudokinase antibody Mixed lineage kinase domain-like protein antibody Mkl antibody MLKL_HUMAN antibody
Accession No.	Swiss-Prot#:Q9D2Y4
Uniprot	Q9D2Y4
GeneID	74568;
Calculated MW	54 kDa
Formulation	1*TBS (pH7.4), 1%BSA, 40%Glycerol. Preservative: 0.05% Sodium Azide.
Storage	Store at -20°C

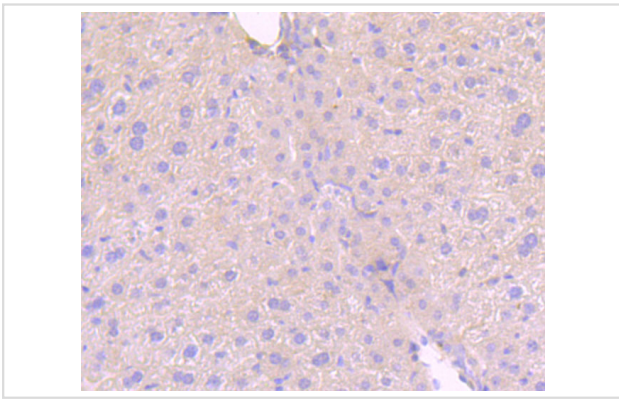
Application Details

IHC: 1:50-1:100

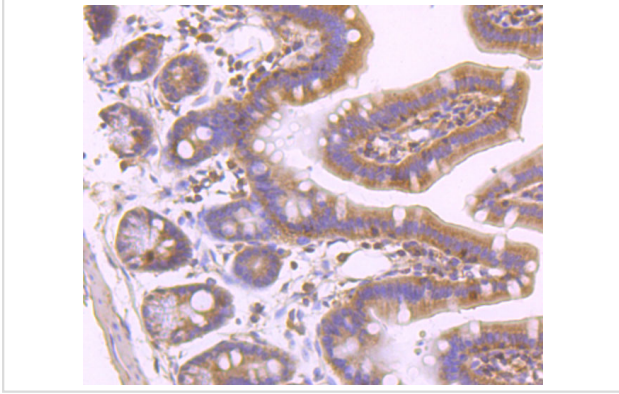
Images



Immunohistochemical analysis of paraffin-embedded mouse lung tissue using anti-MLKL (phospho S345) antibody. Counter stained with hematoxylin.



Immunohistochemical analysis of paraffin-embedded mouse liver tissue using anti-MLKL (phospho S345) antibody. Counter stained with hematoxylin.



Immunohistochemical analysis of paraffin-embedded mouse colon tissue using anti-MLKL (phospho S345) antibody. Counter stained with hematoxylin.

Background

Pseudokinase that plays a key role in TNF-induced necroptosis, a programmed cell death process. Activated following phosphorylation by RIPK3, leading to homotrimerization, localization to the plasma membrane and execution of programmed necrosis characterized by calcium influx and plasma membrane damage. Does not have protein kinase activity.

References

Note: This product is for in vitro research use only