

Carcino Embryonic Antigen CEA Rabbit mAb

Catalog No: #49641

Package Size: #49641-1 50ul #49641-2 100ul

Orders: order@signalwayantibody.comSupport: tech@signalwayantibody.com

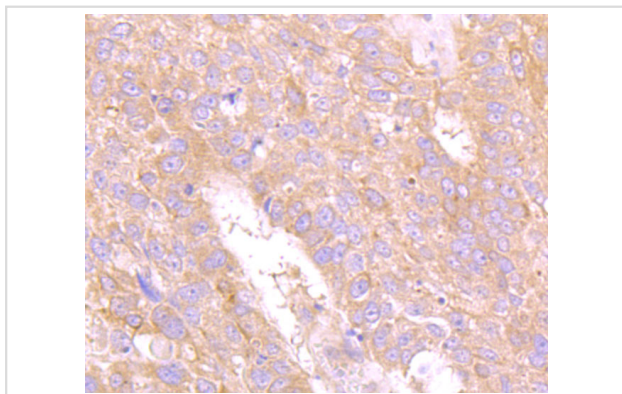
Description

Product Name	Carcino Embryonic Antigen CEA Rabbit mAb
Host Species	Recombinant Rabbit
Clonality	Monoclonal antibody
Clone No.	JM93-28
Purification	ProA affinity purified
Applications	WB, ICC/IF, IHC
Species Reactivity	Hu
Immunogen Description	Recombinant protein
Other Names	Carcinoembryonic antigen antibody Carcinoembryonic antigen-related cell adhesion molecule 5 antibody CD66e antibody CEA antibody Ceacam5 antibody CEAM5_HUMAN antibody DKFZp781M2392 antibody Meconium antigen 100 antibody OTTHUMP00000199032 antibody OTTHUMP00000199033 antibody OTTHUMP00000199034 antibody
Accession No.	Swiss-Prot#:P06731
Uniprot	P06731
GeneID	1048;
Calculated MW	76 kDa
Formulation	1*TBS (pH7.4), 1%BSA, 40%Glycerol. Preservative: 0.05% Sodium Azide.
Storage	Store at -20°C

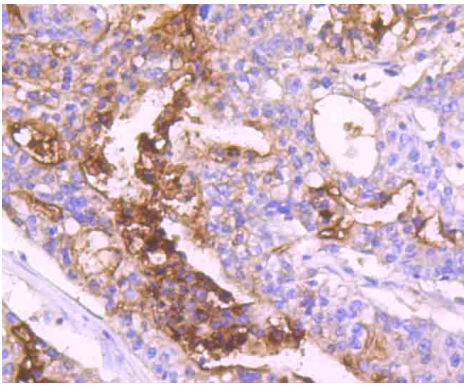
Application Details

WB: 1:500 IHC: 1:50-1:200 ICC: 1:50-1:200

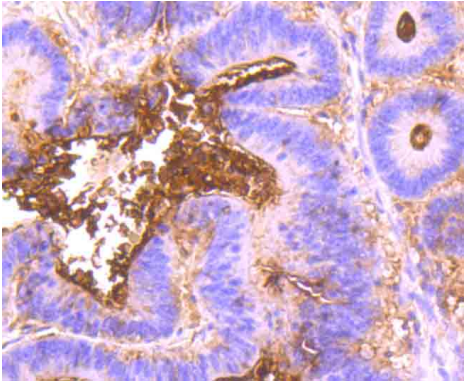
Images



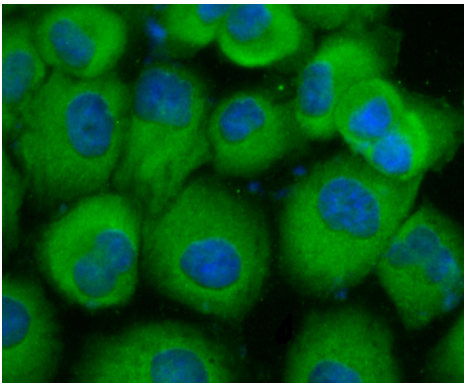
Immunohistochemical analysis of paraffin-embedded human lung cancer tissue using anti-Carcino Embryonic Antigen CEA(CD66e) antibody. Counter stained with hematoxylin.



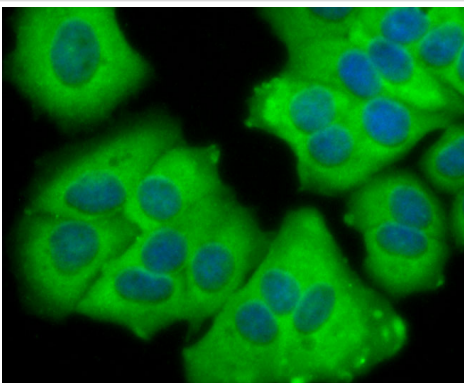
Immunohistochemical analysis of paraffin-embedded human stomach cancer tissue using anti-Carcino Embryonic Antigen CEA(CD66e) antibody. Counter stained with hematoxylin.



Immunohistochemical analysis of paraffin-embedded human colon cancer tissue using anti-Carcino Embryonic Antigen CEA(CD66e) antibody. Counter stained with hematoxylin.



ICC staining Carcino Embryonic Antigen CEA(CD66e) in HUVEC cells (green). The nuclear counter stain is DAPI (blue). Cells were fixed in paraformaldehyde, permeabilised with 0.25% Triton X100/PBS.



ICC staining Carcino Embryonic Antigen CEA(CD66e) in MCF-7 cells (green). The nuclear counter stain is DAPI (blue). Cells were fixed in paraformaldehyde, permeabilised with 0.25% Triton X100/PBS.

Background

The CD66 (carcinoembryonic antigen, CEA, biliary glycoprotein I, BGP-1, CEACAM) immunoglobulin superfamily of genes encode cell adhesion proteins, which are expressed at higher levels in tumorous tissues than in normal tissues. The human CD66 gene family is a diverse set of glycoproteins of epithelial and hematopoietic lineage that comprises 29 genes, which map to chromosome position 19q13.1-q13.2. CD66A, CD66B, CD66C, CD66D, CD66E and CD66F are the best characterized CD66 antigens, and CD66A-D expression upregulates on the surface of granulocytes upon stimulation. Certain CD66 family members mediate homotypic and heterotypic intercellular adhesion events. CD66E, also known as CEA, is a well known tumor marker and a heavily glycosylated GPI-linked cell surface molecule.

References

Note: This product is for in vitro research use only