

SMYD3 Rabbit mAb

Catalog No: #49647



Package Size: #49647-1 50ul #49647-2 100ul

Orders: order@signalwayantibody.com

Support: tech@signalwayantibody.com

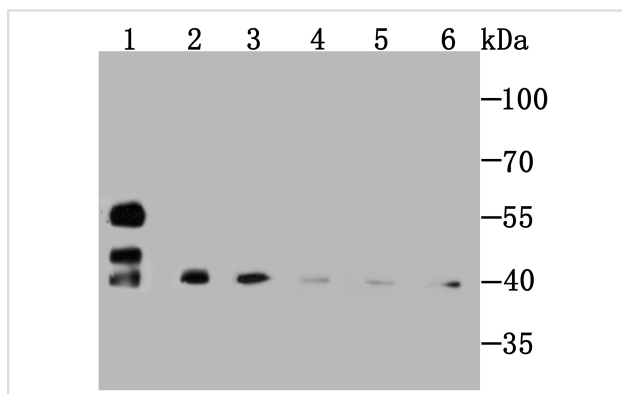
Description

Product Name	SMYD3 Rabbit mAb
Host Species	Recombinant Rabbit
Clonality	Monoclonal antibody
Purification	ProA affinity purified
Applications	WB, ICC/IF, IHC, IP, FC
Species Reactivity	Hu, Ms, Rt
Immunogen Description	Recombinant protein
Other Names	bA74P14.1 (novel protein) antibody bA74P14.1 antibody FLJ21080 antibody histone lysine N methyltransferase SMYD3 antibody KMT3E antibody MGC104324 antibody SET and MYND domain containing 3 antibody SET and MYND domain containing protein 3 antibody SET and MYND domain-containing protein 3 antibody SMYD 3 antibody Smyd3 antibody SMYD3 protein antibody SMYD3_HUMAN antibody Zinc finger MYND domain containing 1 antibody Zinc finger MYND domain containing protein 1 antibody Zinc finger MYND domain-containing protein 1 antibody Zinc finger protein subfamily 3A MYND domain containing 1 antibody Zinc finger protein, subfamily 3A (MYND domain containing), 1 antibody ZMYND 1 antibody ZMYND1 antibody ZNFN3A1 antibody
Accession No.	Swiss-Prot#:Q9H7B4
Uniprot	Q9H7B4
GeneID	64754;
Formulation	1*TBS (pH7.4), 1%BSA, 40%Glycerol. Preservative: 0.05% Sodium Azide.
Storage	Store at -20°C

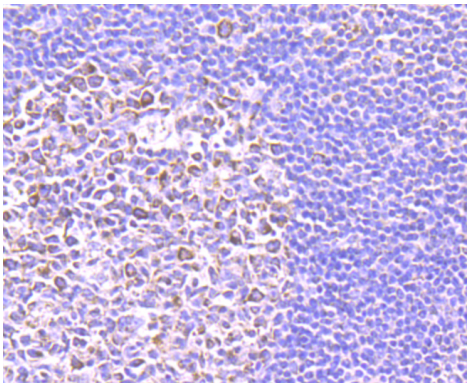
Application Details

WB: 1:500-1:2,000 IHC: 1:50-1:200 ICC/IF: 1:50-1:200 FC: 1:50-1:100

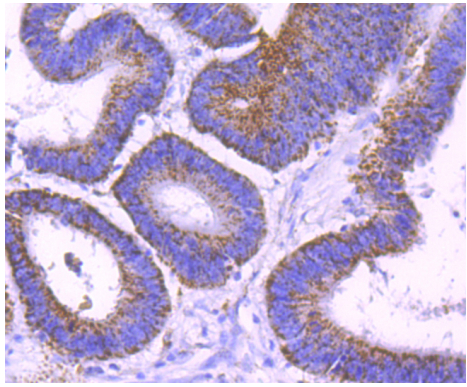
Images



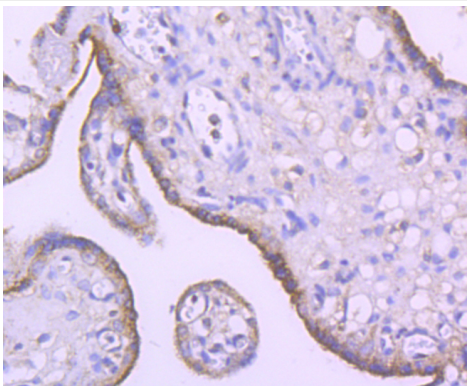
Western blot analysis of SMYD3 on different cell/tissue lysate using anti-Profilin 1 antibody at 1/1,000 dilution. Positive control Ω $\frac{1}{2}$ Ω $\frac{1}{2}$ Lane1: Rat kidney
 Lane2: PC-12
 Lane3: Hela
 Lane4: Mouse spleen
 Lane5: NIH-3T3
 Lane6: Rat spleen



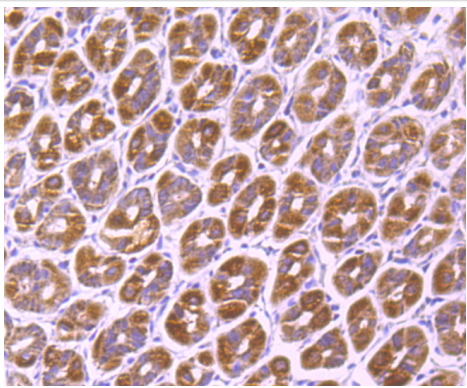
Immunohistochemical analysis of paraffin-embedded human tonsil tissue using anti-SMYD3 antibody. Counter stained with hematoxylin.



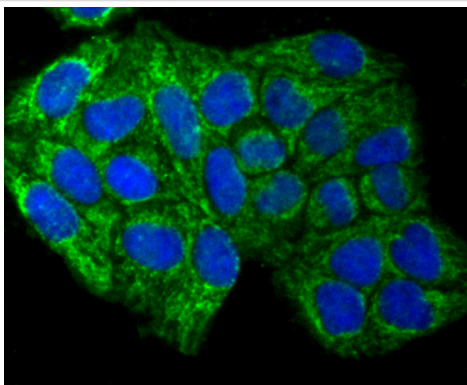
Immunohistochemical analysis of paraffin-embedded human colon cancer tissue using anti-SMYD3 antibody. Counter stained with hematoxylin.



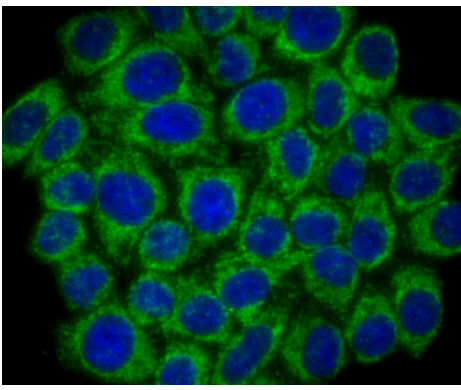
Immunohistochemical analysis of paraffin-embedded human placenta tissue using anti-SMYD3 antibody. Counter stained with hematoxylin.



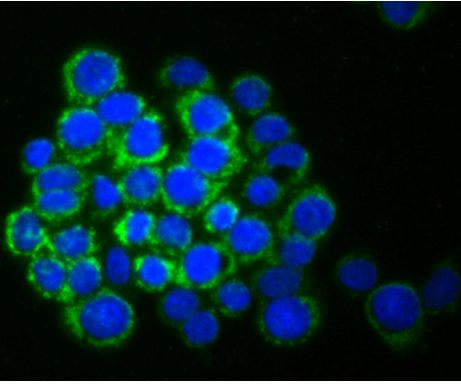
Immunohistochemical analysis of paraffin-embedded mouse stomach tissue using anti-SMYD3 antibody. Counter stained with hematoxylin.



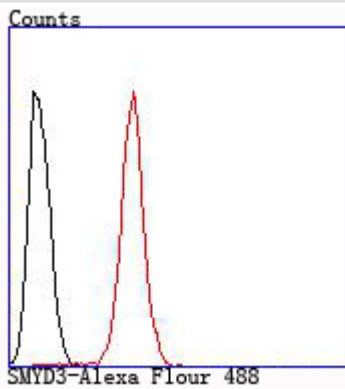
ICC staining SMYD3 in HeLa cells (green). The nuclear counter stain is DAPI (blue). Cells were fixed in paraformaldehyde, permeabilised with 0.25% Triton X100/PBS.



ICC staining SMYD3 in HepG2 cells (green). The nuclear counter stain is DAPI (blue). Cells were fixed in paraformaldehyde, permeabilised with 0.25% Triton X100/PBS.



ICC staining SMYD3 in LOVO cells (green). The nuclear counter stain is DAPI (blue). Cells were fixed in paraformaldehyde, permeabilised with 0.25% Triton X100/PBS.



Flow cytometric analysis of Hela cells with SMYD3 antibody at 1/100 dilution (red) compared with an unlabelled control (cells without incubation with primary antibody; black).

Background

Belongs to the histone-lysine methyltransferase family. Contains 1 MYND-type zinc finger. Contains 1 SET domain. Histones methyltransferase. Methylans 'Lys-4' of histone H3, inducing di- and tri-methylation, but not monomethylation. Plays an important role in transcriptional activation as a member of an RNA polymerase complex. Binds DNA containing 5'-CCCTCC- 3 'or 5'-GAGGGG-3'.

References

Note: This product is for in vitro research use only