

## Apelin Polyclonal Antibody

Catalog No: #41574

Package Size: #41574-1 50ul #41574-2 100ul

Orders: [order@signalwayantibody.com](mailto:order@signalwayantibody.com)Support: [tech@signalwayantibody.com](mailto:tech@signalwayantibody.com)

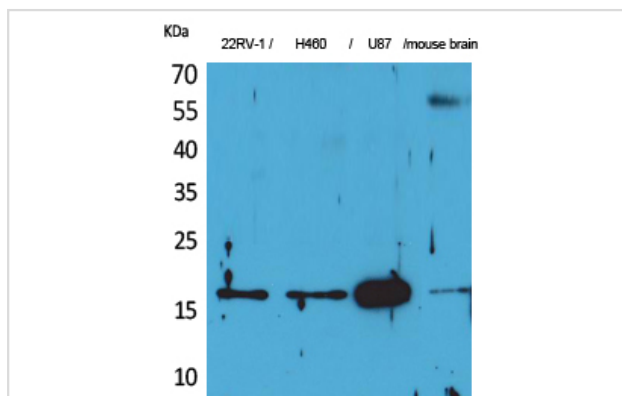
## Description

|                       |   |
|-----------------------|---|
| Product Name          | Apelin Polyclonal Antibody  |
| Host Species          | Rabbit  |
| Clonality             | Polyclonal  |
| Purification          | The antibody was affinity-purified from rabbit antiserum by affinity-chromatography using epitope-specific immunogen. |
| Applications          | WB  |
| Species Reactivity    | Hu Ms Rt  |
| Specificity           | Apelin Polyclonal Antibody detects endogenous levels of Apelin protein.   |
| Immunogen Type        | peptide   |
| Immunogen Description | Synthesized peptide derived from the C-terminal region of human Apelin.   |
| Target Name           | Apelin  |
| Other Names           | APLN; APEL; Apelin; APJ endogenous ligand   |
| Accession No.         | Swiss-Prot: Q9ULZ1NCBI Gene ID: 8862  |
| Uniprot               | Q9ULZ1  |
| GeneID                | 8862;   |
| SDS-PAGE MW           | 16kd  |
| Concentration         | 1mg/ml  |
| Formulation           | Liquid in PBS containing 50% glycerol, 0.5% BSA and 0.02% sodium azide.   |
| Storage               | Store at -20°C/1 year   |

## Application Details

Western Blot: 1/500 - 1/2000.

## Images



Western Blot analysis of 22RV-1 H460 U87 mouse brain cells using Apelin Polyclonal Antibody

---

Note: This product is for in vitro research use only