

ANP Rabbit mAb

Catalog No: #49666

Package Size: #49666-1 50ul #49666-2 100ul

Orders: order@signalwayantibody.com

Support: tech@signalwayantibody.com

Description

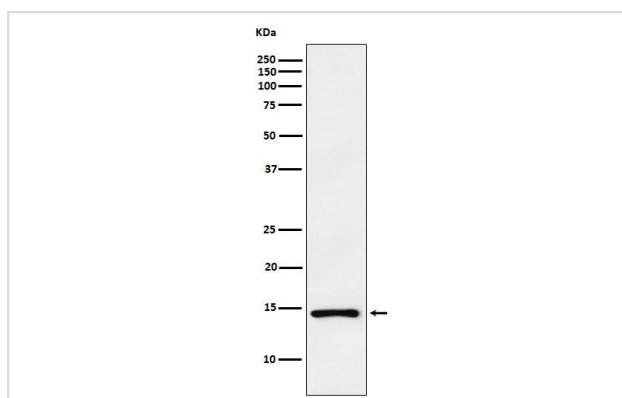
Product Name	ANP Rabbit mAb
Clone No.	JM08-36
Purification	Affinity-chromatography
Applications	WB, IP
Species Reactivity	Hu
Immunogen Description	A synthesized peptide derived from human Natriuretic peptides A
Other Names	ANF antibody ANF_HUMAN antibody ANP antibody ATFB6 antibody Atrial natriuretic factor antibody Atrial natriuretic peptide antibody Atriopeptin antibody Cardiodilatin antibody Cardiodilatin-related peptide antibody Cardionatrin antibody CDD ANF antibody CDD antibody CDD-ANF antibody CDP antibody Natriuretic peptide A antibody Natriuretic peptide precursor A antibody NPPA antibody PND antibody Prepronatriodilatin antibody
Accession No.	Swiss-Prot#:P01160
Uniprot	P01160
GeneID	4878;
Calculated MW	16 kDa
Formulation	Rabbit IgG in 10mM phosphate buffered saline , pH 7.4, 150mM sodium chloride, 0.05% BSA, 0.02% sodium azide and 50% glycerol.
Storage	Store at +4°C for short term. Store at -20°C for long term. Avoid freeze/thaw cycle.

Application Details

WB 1:1000-1:2000

IP 1:20-1:50

Images



Western blot analysis of ANP expression in PC3 cell lysate.

Background

Hormone that plays a key role in mediating cardio-renal homeostasis, and is involved in vascular remodeling and regulating energy metabolism.

Note: This product is for in vitro research use only