

Cullin 1 Rabbit mAb

Catalog No: #49672

Package Size: #49672-1 50ul #49672-2 100ul

Orders: order@signalwayantibody.comSupport: tech@signalwayantibody.com

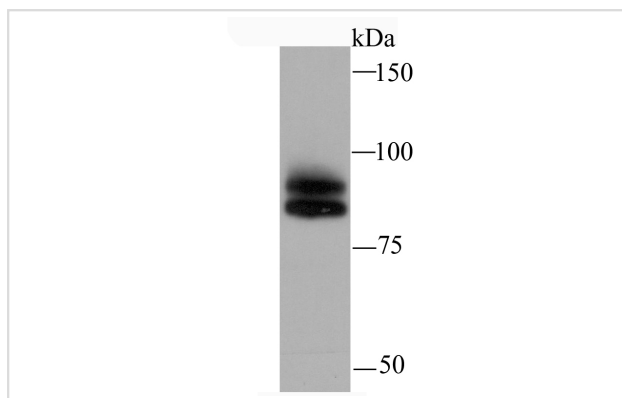
Description

Product Name	Cullin 1 Rabbit mAb
Host Species	Recombinant Rabbit
Clonality	Monoclonal antibody
Purification	ProA affinity purified
Applications	WB, IHC, IP, FC, ICC/IF
Species Reactivity	Hu, Ms, Rt
Immunogen Description	Recombinant protein
Other Names	CUL 1 antibody CUL-1 antibody CUL1 antibody CUL1_HUMAN antibody Cullin-1 antibody Cullin1 antibody MGC149834 antibody MGC149835 antibody
Accession No.	Swiss-Prot#:Q13616
Uniprot	Q13616
GeneID	8454;
Formulation	1*TBS (pH7.4), 1%BSA, 40%Glycerol. Preservative: 0.05% Sodium Azide.
Storage	Store at -20°C

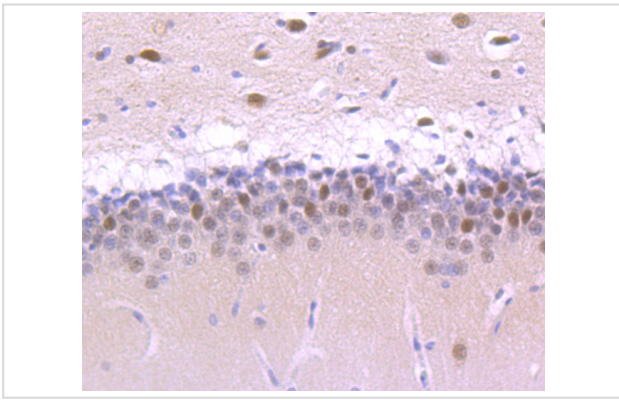
Application Details

WB: 1:500-1:2,000 IHC: 1:50-1:200 ICC/IF: 1:10-1:50 IP: 1:10-1:50 FC: 1:50-1:100

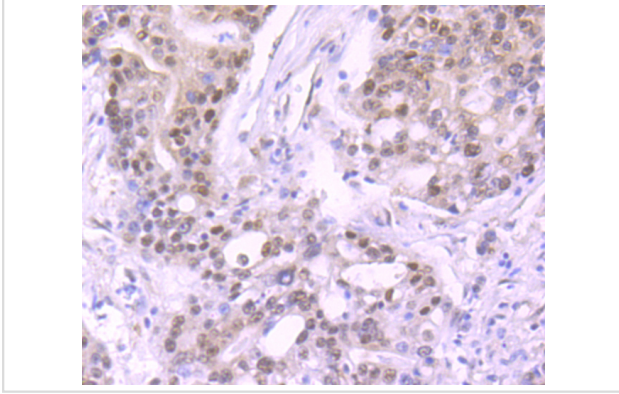
Images



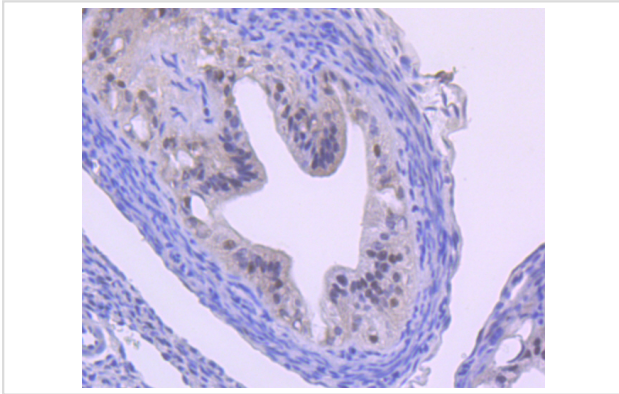
Western blot analysis of Cullin 1 on MCF-7 cell using anti-Cullin 1 antibody at 1/1,000 dilution.



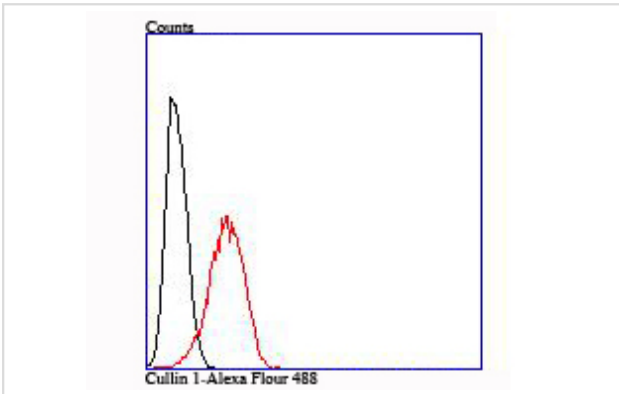
Immunohistochemical analysis of paraffin-embedded rat brain tissue using anti-Cullin 1 antibody. Counter stained with hematoxylin.



Immunohistochemical analysis of paraffin-embedded human stomach cancer tissue using anti-Cullin 1 antibody. Counter stained with hematoxylin.



Immunohistochemical analysis of paraffin-embedded mouse oviduct tissue using anti-Cullin 1 antibody. Counter stained with hematoxylin.



Flow cytometric analysis of HeLa cells with Cullin 1 antibody at 1/100 dilution (red) compared with an unlabelled control (cells without incubation with primary antibody; black).

Background

Cullin proteins comprise a distinct family of mediators that participate in the selective targeting of proteins for ubiquitin (Ub)-mediated proteolysis. CUL-1, which is the mammalian homolog of yeast Cdc53, is an integral component of the E3 ubiquitin ligase complex designated SCF. The SCF (Skp1/CUL-1/F-box protein complex) consists of Skp1 associating with both CUL-1 and an F-box protein, such as Skp2, which determines the substrate specificity of the complex. CUL-1-mediated ubiquitination results in the degradation of cell cycle proteins cyclin D, p21 and cyclin E. Another cullin, CUL-3, facilitates the degradation of cyclin E independent of SCF activity, while CUL-2 associates with the tumor suppressing protein VHL and elongin B to form VBC complexes, which structurally resemble the SCF ligase. Proteolysis also occurs by way of CUL-4 associating with Nedd-8, a ubiquitin-like protein, where it too functions as an active component of a multifunctional E3 complex. CUL-5, also designated vasopressin-activated,

calcium-mobilizing protein (VACM-1), is also included in the cullin family as it shares substantial sequence homology with CUL-1.

References

Note: This product is for in vitro research use only