

Galectin 1 Rabbit mAb

Catalog No: #49673



Package Size: #49673-1 50ul #49673-2 100ul

Orders: order@signalwayantibody.com

Support: tech@signalwayantibody.com

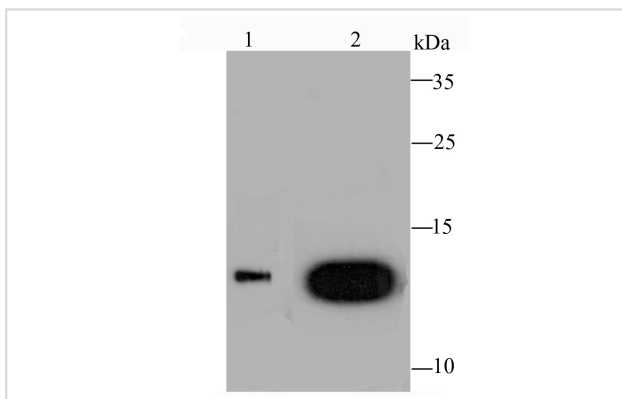
Description

Product Name	Galectin 1 Rabbit mAb
Host Species	Recombinant Rabbit
Clonality	Monoclonal antibody
Purification	ProA affinity purified
Applications	WB, ICC/IF, IHC, IP, FC
Species Reactivity	Hu, Rt, Ms
Immunogen Description	Recombinant protein
Other Names	14 kDa laminin-binding protein antibody 14 kDa lectin antibody Beta galactoside binding lectin antibody Beta galactoside binding lectin L 14 I antibody beta galactoside binding protein antibody Beta-galactoside-binding lectin L-14-I antibody DKFZp686E23103 antibody Gal 1 antibody Gal-1 antibody GAL1 antibody Galaptin antibody Galbp antibody Galectin antibody Galectin-1 antibody Galectin1 antibody GBP antibody HBL antibody HLBP14 antibody HPL antibody L 14.5 antibody L-14.5 antibody L14 antibody Lactose binding lectin 1 antibody Lactose-binding lectin 1 antibody Lect14 antibody Lectin galactoside binding soluble 1 antibody Lectin galactoside-binding soluble 1 antibody LEG1_HUMAN antibody LGALS 1 antibody LGALS1 antibody Lgals1 lectin galactose binding soluble 1 antibody MAPK activating protein MP12 antibody Putative MAPK activating protein MP12 antibody Putative MAPK-activating protein PM12 antibody S Lac lectin 1 antibody S-Lac lectin 1 antibody
Accession No.	Swiss-Prot#:P09382
Uniprot	P09382
GeneID	3956;
Formulation	1*TBS (pH7.4), 1%BSA, 40%Glycerol. Preservative: 0.05% Sodium Azide.
Storage	Store at -20°C

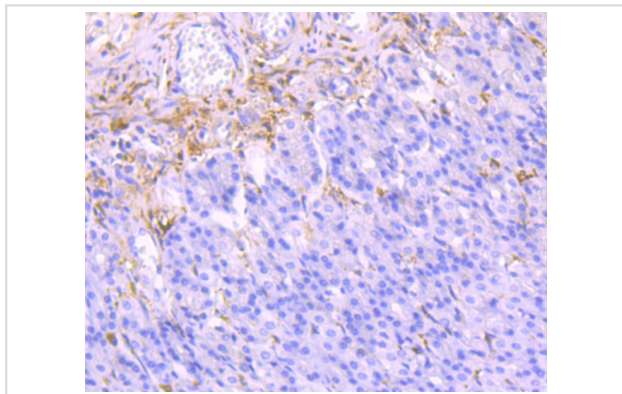
Application Details

WB: 1:500-1:1,000 IHC: 1:400-1:800 ICC/IF: 1:50-1:200IP: 1:10-1:50FC: 1:50-1:100

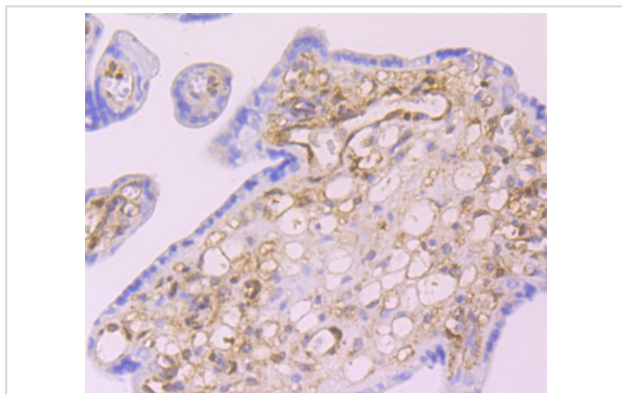
Images



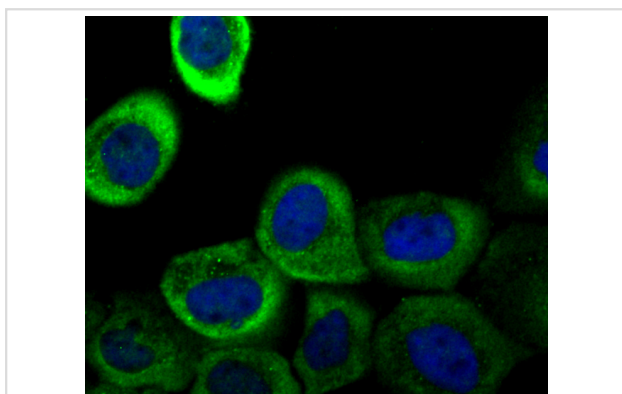
Western blot analysis of Galectin 1 on HL-60 cell (1) and human skeletal muscle tissue (2) lysate using anti-Galectin 1 antibody at 1/1,000 dilution.



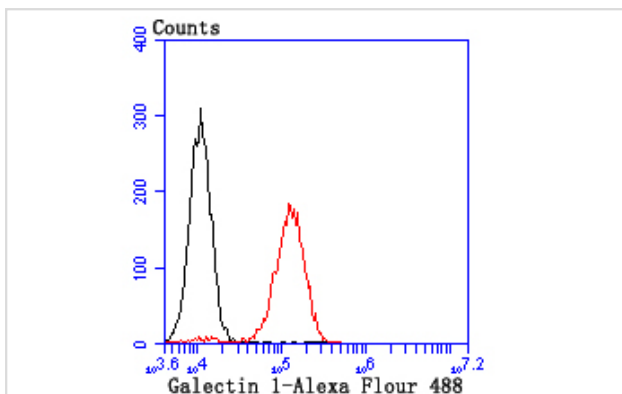
Immunohistochemical analysis of paraffin-embedded rat stomach tissue using anti-Galectin 1 antibody. Counter stained with hematoxylin.



Immunohistochemical analysis of paraffin-embedded human placenta tissue using anti-Galectin 1 antibody. Counter stained with hematoxylin.



ICC staining Galectin 1 in A431 cells (green). The nuclear counter stain is DAPI (blue). Cells were fixed in paraformaldehyde, permeabilised with 0.25% Triton X100/PBS.



Flow cytometric analysis of NIH-3T3 cells with Galectin 1 antibody at 1/100 dilution (red) compared with an unlabelled control (cells without incubation with primary antibody; black).

Background

Galectins are a family of soluble b-galactoside-binding animal lectins that modulate cell-to-cell adhesion and cell-to-extracellular matrix (ECM) interactions and play a role in tumor progression, pre-mRNA splicing and apoptosis. Specifically, Galectin-1 is an autocrine regulator of cell-proliferation that plays a role in the maintenance of G0 and in the control of G2 traverse. Galectin-1, also known as LGALS1, is the protein product of a single gene linked to human chromosome 22q13.1. The Galectin-1 protein contains 135 amino acids, a single internal EcoRI site and a polyadenylation signal. Galectin-1 can localize to both intracellular and extracellular space. Galectin-1 is expressed in human placenta, human lung, HL-6, HepG2 and CEM cells.

References

Note: This product is for in vitro research use only