

Estrogen Inducible Protein pS2 Rabbit mAb

Catalog No: #49675

Package Size: #49675-1 50ul #49675-2 100ul

Orders: order@signalwayantibody.com

Support: tech@signalwayantibody.com

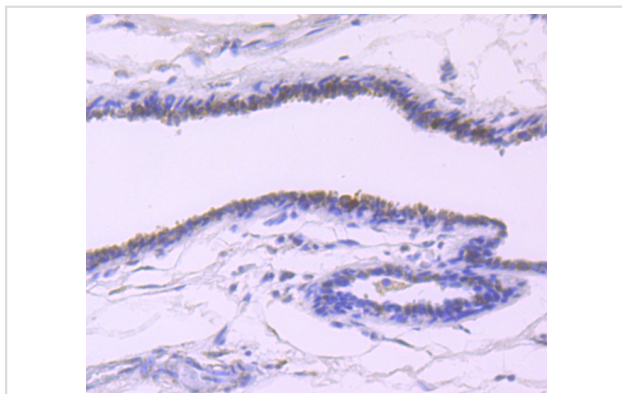
Description

Product Name	Estrogen Inducible Protein pS2 Rabbit mAb
Host Species	Recombinant Rabbit
Clonality	Monoclonal antibody
Purification	ProA affinity purified
Applications	WB, ICC/IF, IHC, IP, FC
Species Reactivity	Hu
Immunogen Description	Recombinant protein
Other Names	BCEI antibody Breast cancer estrogen inducible protein antibody Breast cancer estrogen inducible sequence antibody Breast cancer estrogen-inducible protein antibody D21S21 antibody Gastrointestinal trefoil protein antibody Gastrointestinal trefoil protein pS2 antibody hP1.A antibody HP1A antibody HPS 2 antibody HPS2 antibody pNR 2 antibody PNR-2 antibody pNR2 antibody Polypeptide P1.A antibody Protein pS2 antibody PS 2 antibody pS2 antibody pS2 protein antibody TFF 1 antibody TFF1 antibody TFF1_HUMAN antibody Trefoil factor 1 antibody
Accession No.	Swiss-Prot#:P04155
Uniprot	P04155
GeneID	7031;
Formulation	1*TBS (pH7.4), 1%BSA, 40%Glycerol. Preservative: 0.05% Sodium Azide.
Storage	Store at -20°C

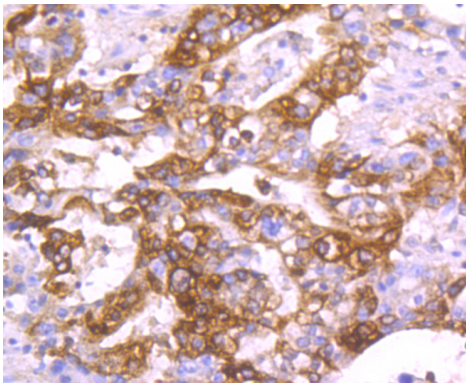
Application Details

IHC: 1:50-1:200 ICC/IF: 1:50-1:200 IP: 1:10-1:50 FC: 1:50-1:100

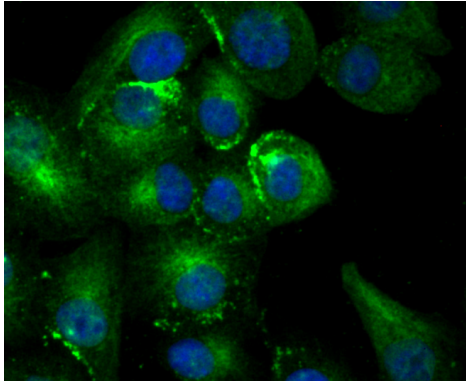
Images



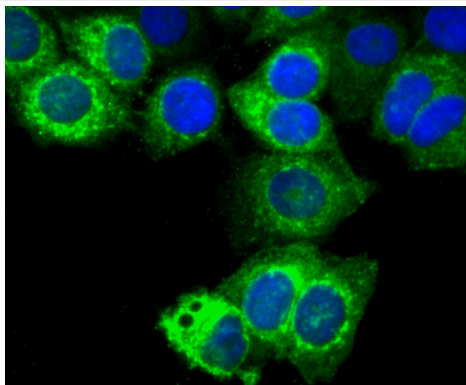
Immunohistochemical analysis of paraffin-embedded human breast cancer tissue using anti-Estrogen Inducible Protein pS2 antibody. Counter stained with hematoxylin.



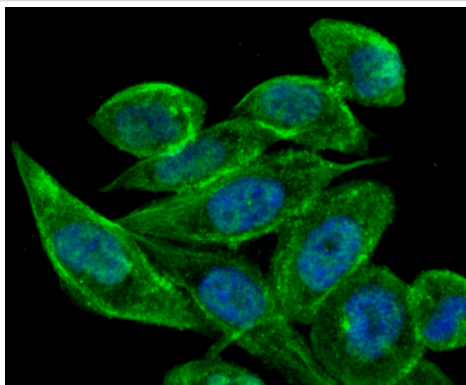
Immunohistochemical analysis of paraffin-embedded human stomach cancer tissue using anti-Estrogen Inducible Protein pS2 antibody. Counter stained with hematoxylin.



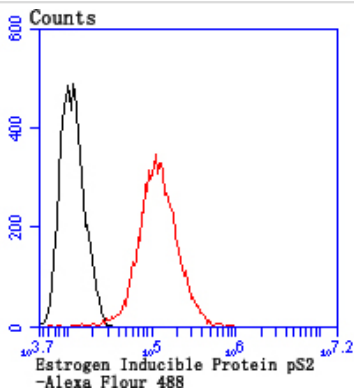
ICC staining Estrogen Inducible Protein pS2 in A549 cells (green). The nuclear counter stain is DAPI (blue). Cells were fixed in paraformaldehyde, permeabilised with 0.25% Triton X100/PBS.



ICC staining Estrogen Inducible Protein pS2 in MCF-7 cells (green). The nuclear counter stain is DAPI (blue). Cells were fixed in paraformaldehyde, permeabilised with 0.25% Triton X100/PBS.



ICC staining Estrogen Inducible Protein pS2 in PC-3M cells (green). The nuclear counter stain is DAPI (blue). Cells were fixed in paraformaldehyde, permeabilised with 0.25% Triton X100/PBS.



Flow cytometric analysis of MCF-7 cells with Estrogen Inducible Protein pS2 antibody at 1/100 dilution (red) compared with an unlabelled control (cells without incubation with primary antibody; black).

Background

Trefoil peptides are protease resistant molecules secreted throughout the gut that play a role in mucosal healing. These peptides contain three intrachain disulfide bonds, forming the trefoil motif, or P-domain. pS2, also designated Md2, BCEI, TFF1 and pNR-2, is a trefoil protein that is highly expressed in normal gastric mucosa. pS2 has also been detected in a number of carcinomas including cancers of the breast, pancreas and stomach. pS2 is not present in normal breast tissue but is inducible by estrogen in MCF7 cells. pS2 is known to form dimers and this dimerization is thought to play a role in its protective and healing properties. The gene encoding pS2 maps to human chromosome 21q22.3.

References

Note: This product is for in vitro research use only