

Klotho Rabbit mAb

Catalog No: #49678

Package Size: #49678-1 50ul #49678-2 100ul

Orders: order@signalwayantibody.com

Support: tech@signalwayantibody.com

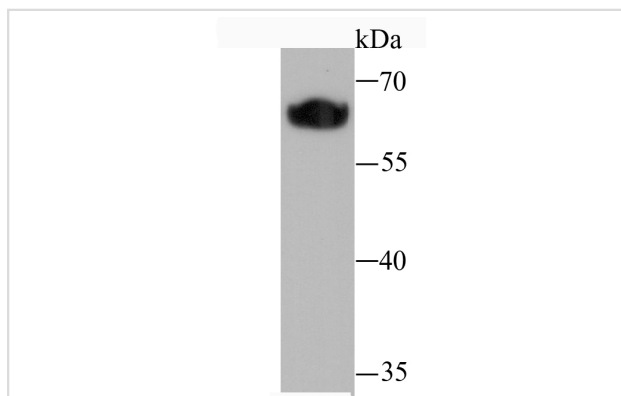
Description

Product Name	Klotho Rabbit mAb
Host Species	Recombinant Rabbit
Clonality	Monoclonal antibody
Purification	ProA affinity purified
Applications	WB, IHC
Species Reactivity	Hu, Ms
Immunogen Description	Recombinant protein
Other Names	KI antibody KLOT_HUMAN antibody Klotho peptide antibody
Accession No.	Swiss-Prot#:Q9UEF7
Uniprot	Q9UEF7
GeneID	9365;
Formulation	1*TBS (pH7.4), 1%BSA, 40%Glycerol. Preservative: 0.05% Sodium Azide.
Storage	Store at -20°C

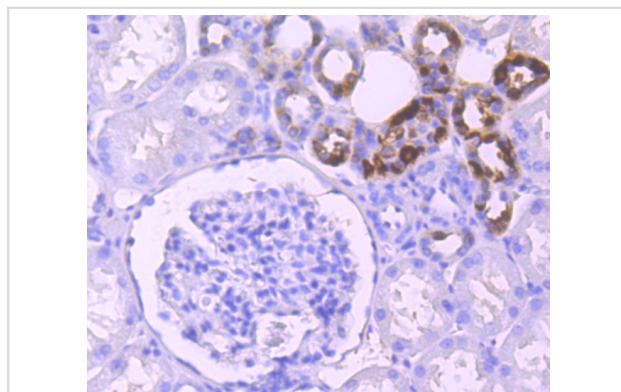
Application Details

WB: 1:500-1:2,000 IHC: 1:50-1:200

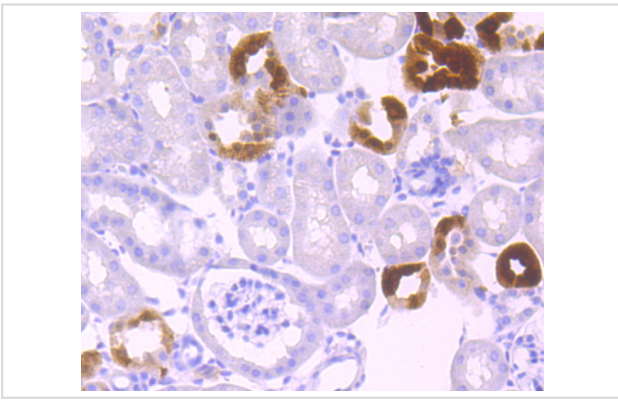
Images



Western blot analysis of Klotho on human serum lysate using anti-Klotho antibody at 1/1,000 dilution.



Immunohistochemical analysis of paraffin-embedded human kidney tissue using anti-Klotho antibody. Counter stained with hematoxylin.



Immunohistochemical analysis of paraffin-embedded mouse kidney tissue using anti-Klotho antibody. Counter stained with hematoxylin.

Background

May have weak glycosidase activity towards glucuronylated steroids. However, it lacks essential active site Glu residues at positions 239 and 872, suggesting it may be inactive as a glycosidase in vivo. May be involved in the regulation of calcium and phosphorus homeostasis by inhibiting the synthesis of active vitamin D. Essential factor for the specific interaction between FGF23 and FGFR1. The Klotho peptide generated by cleavage of the membrane-bound isoform may be an anti-aging circulating hormone which would extend life span by inhibiting insulin/IGF1 signaling.

References

Note: This product is for in vitro research use only