

Aldolase Rabbit mAb

Catalog No: #49682



Package Size: #49682-1 50ul #49682-2 100ul

Orders: order@signalwayantibody.com

Support: tech@signalwayantibody.com

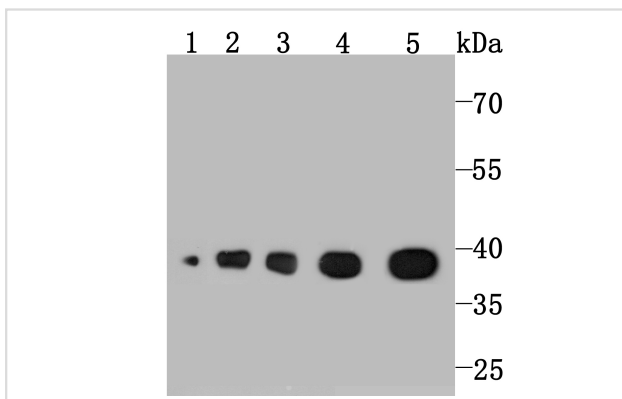
Description

Product Name	Aldolase Rabbit mAb
Host Species	Recombinant Rabbit
Clonality	Monoclonal antibody
Clone No.	JM54-19
Purification	ProA affinity purified
Applications	WB, ICC, IF, IHC
Species Reactivity	Hu, Ms, Rt, Zebrafish
Immunogen Description	Recombinant protein
Other Names	ALDA antibody Aldo1 antibody ALDOA antibody ALDOA_HUMAN antibody Aldolase 1 antibody Aldolase A antibody Aldolase A fructose bisphosphatase antibody Aldolase A fructose bisphosphate antibody Aldolase, fructose-bisphosphate A antibody Epididymis secretory sperm binding protein Li 87p antibody FRUCTOALDOLASE A antibody Fructose 1 6 bisphosphate triosephosphate lyase antibody Fructose bisphosphate aldolase A antibody Fructose bisphosphate aldolase antibody FRUCTOSE-1,6-BISPHOSPHATE ALDOLASE A antibody Fructose-bisphosphate aldolase A antibody Fructose-bisphosphate aldolase A Muscle-type antibody GSD12 antibody HEL S 87p antibody Lung cancer antigen NY LU 1 antibody Lung cancer antigen NY-LU-1 antibody MGC10942 antibody MGC17716 antibody MGC17767 antibody Muscle type aldolase antibody Muscle-type aldolase antibody RNALDOG5 antibody
Accession No.	Swiss-Prot#:P04075
Uniprot	P04075
GeneID	226;
Calculated MW	39 kDa
Formulation	1*TBS (pH7.4), 1%BSA, 40%Glycerol. Preservative: 0.05% Sodium Azide.
Storage	Store at -20°C

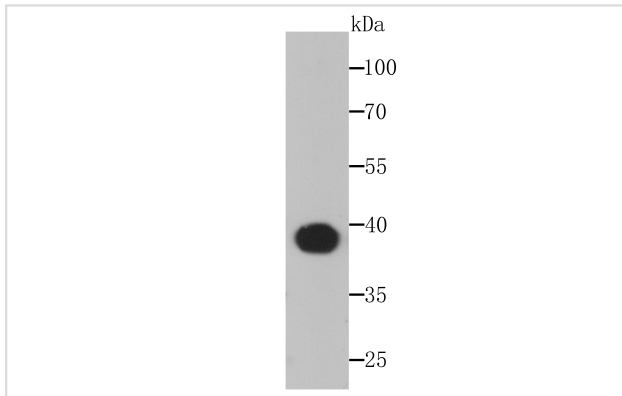
Application Details

WB: 1:500-1:2,000 IHC: 1:50-1:200 ICC/IF: 1:50-1:200

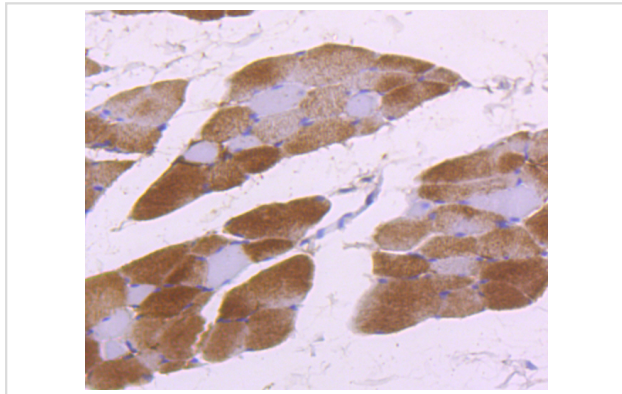
Images



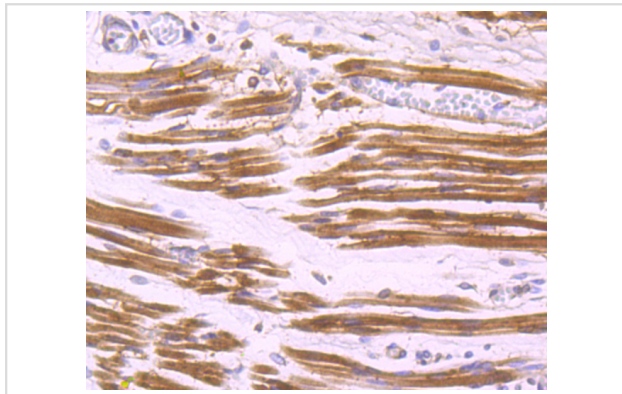
Western blot analysis of Aldolase on different lysates using anti-Aldolase antibody at 1/1,000 dilution. Positive control:
 Lane 1: A549 Lane 2: Hela Lane 3: Mouse liver
 Lane 4: Rat liver Lane 5: Rat spleen



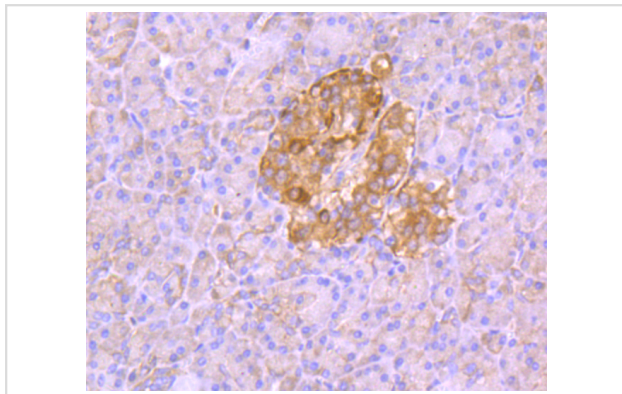
Western blot analysis of Aldolase on Zebrafish tissue lysates using anti-Aldolase antibody at 1/200 dilution.



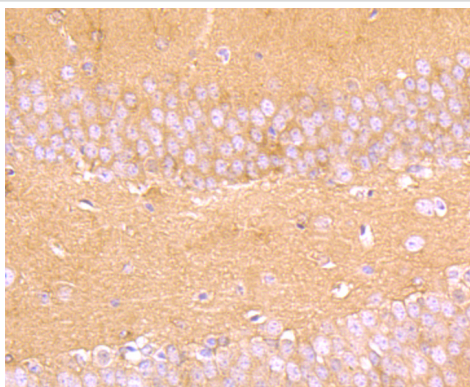
Immunohistochemical analysis of paraffin-embedded rat skeletal muscle tissue using anti-Aldolase antibody. Counter stained with hematoxylin.



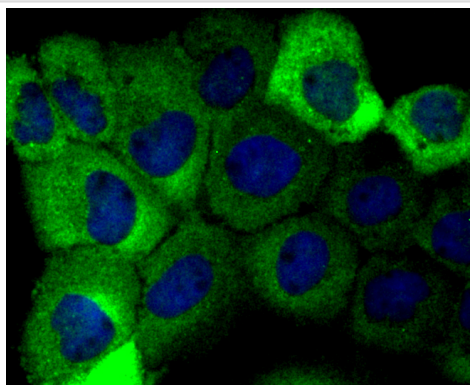
Immunohistochemical analysis of paraffin-embedded human fetal skeletal muscle tissue using anti-Aldolase antibody. Counter stained with hematoxylin.



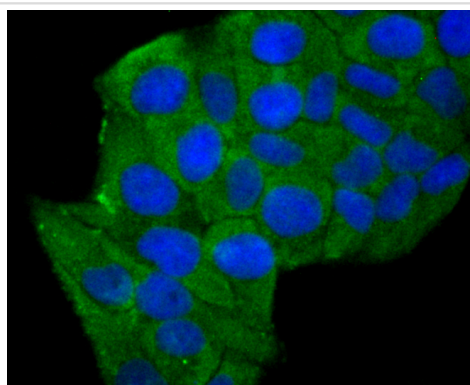
Immunohistochemical analysis of paraffin-embedded human pancreas tissue using anti-Aldolase antibody. Counter stained with hematoxylin.



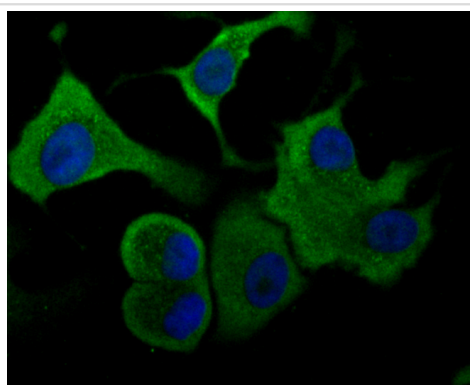
Immunohistochemical analysis of paraffin-embedded mouse brain tissue using anti-Aldolase antibody. Counter stained with hematoxylin.



ICC staining Aldolase in A431 cells (green). The nuclear counter stain is DAPI (blue). Cells were fixed in paraformaldehyde, permeabilised with 0.25% Triton X100/PBS.



ICC staining Aldolase in HeLa cells (green). The nuclear counter stain is DAPI (blue). Cells were fixed in paraformaldehyde, permeabilised with 0.25% Triton X100/PBS.



ICC staining Aldolase in SK-Br-3 cells (green). The nuclear counter stain is DAPI (blue). Cells were fixed in paraformaldehyde, permeabilised with 0.25% Triton X100/PBS.

Background

Fructose 1,6-bisphosphate aldolase catalyses the reversible condensation of glycerone-P and glyceraldehyde 3-phosphate into fructose 1,6-bisphosphate. Fructose 1,6-bisphosphate aldolase exists as three forms: the muscle-specific Aldolase A; the liver-specific Aldolase B; and the brain-specific Aldolase C. Aldolase A, B and C arose from a common ancestral gene from which Aldolase B first diverged. Aldolase A is one of the most highly-conserved enzymes known, with only about 2% of the residues changing per 100 million years. Aldolase B is regulated by the hormones insulin and glucagon, and has been implicated in hereditary fructose intolerance disease. Aldolase C is a polypeptide that is exclusively expressed in Purkinje cells. Aldolase C-positive Purkinje cells are organized in the cerebellum as stripes or bands that run from anterior to posterior across the cerebellum and alternate with bands of Aldolase C-negative Purkinje cells.

References

Note: This product is for in vitro research use only