

## Vinculin Rabbit mAb

Catalog No: #49684

Package Size: #49684-1 50ul #49684-2 100ul

Orders: order@signalwayantibody.com

Support: tech@signalwayantibody.com

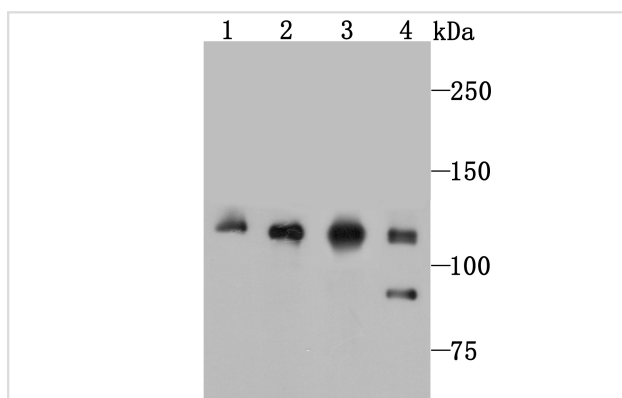
## Description

Product Name	Vinculin Rabbit mAb
Host Species	Recombinant Rabbit
Clonality	Monoclonal antibody
Clone No.	JM42-43
Purification	ProA affinity purified
Applications	WB, ICC/IF, IP
Species Reactivity	Hu, Ms, Rt
Immunogen Description	Recombinant protein
Other Names	CMD1W antibody CMH15 antibody Epididymis luminal protein 114 antibody HEL114 antibody Metavinculin antibody MV antibody MVCL antibody OTTHUMP00000019861 antibody OTTHUMP00000019862 antibody VCL antibody VINC antibody VINC_HUMAN antibody Vinculin antibody
Accession No.	Swiss-Prot#:P18206
Uniprot	P18206
GeneID	7414;
Calculated MW	124 kDa
Formulation	1*TBS (pH7.4), 1%BSA, 40%Glycerol. Preservative: 0.05% Sodium Azide.
Storage	Store at -20°C

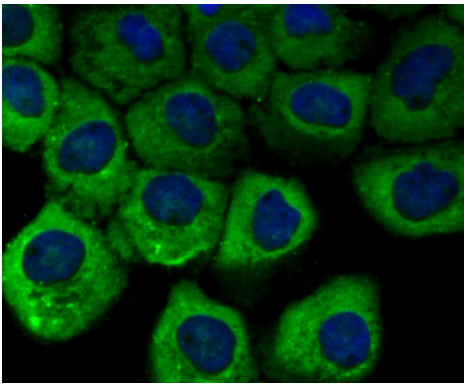
## Application Details

WB: 1:500-1:2,000 ICC/IF: 1:50-1:200 IP: 1:10-1:50

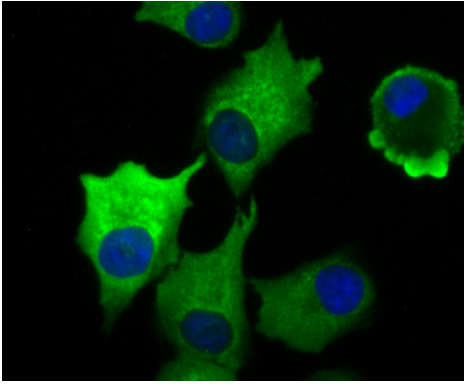
## Images



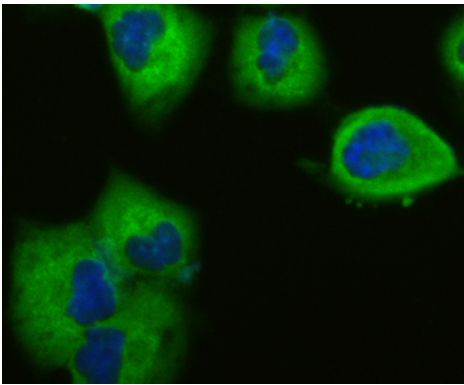
Western blot analysis of Vinculin on different lysates using anti-Vinculin antibody at 1/1,000 dilution. Positive control:  
 Lane 1: HepG2 Lane 2: Human fetal skeletal muscle Lane 3: Rat spleen  
 Lane 4: Mouse kidney



ICC staining Vinculin in A431 cells (green). The nuclear counter stain is DAPI (blue). Cells were fixed in paraformaldehyde, permeabilised with 0.25% Triton X100/PBS.



ICC staining Vinculin in A549 cells (green). The nuclear counter stain is DAPI (blue). Cells were fixed in paraformaldehyde, permeabilised with 0.25% Triton X100/PBS.



ICC staining Vinculin in HUVEC cells (green). The nuclear counter stain is DAPI (blue). Cells were fixed in paraformaldehyde, permeabilised with 0.25% Triton X100/PBS.

## Background

Focal adhesions are identified as areas within the plasma membrane of tissue culture cells that adhere tightly to the underlying substrate. In vivo, these regions are involved in the adhesion of cells to the extracellular matrix. Paxillin and vinculin are cytoskeletal, focal adhesion proteins that are components of a protein complex which links the Actin network to the plasma membrane. Vinculin binding sites have been identified on other cytoskeletal proteins, including Talin and  $\alpha$ -actinin. In addition, vinculin, Talin and  $\alpha$ -actinin each contain Actin binding sites. Expression of vinculin and Talin have been shown to be affected by the level of Actin expression.  $\alpha$ -Actinin has been shown to link Actin to integrins in the plasma membrane through interactions with the vinculin and Talin complex or by a direct interaction with integrin.

## References

Note: This product is for in vitro research use only