

CD11b Rabbit mAb

Catalog No: #49692



Package Size: #49692-1 50ul #49692-2 100ul

Orders: order@signalwayantibody.com

Support: tech@signalwayantibody.com

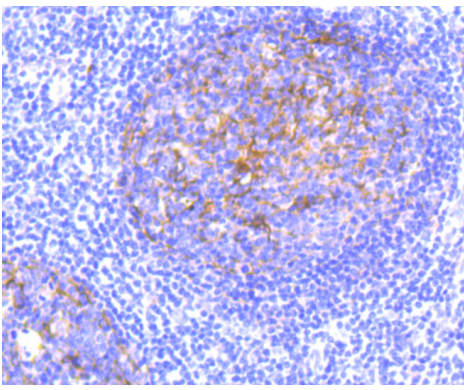
Description

Product Name	CD11b Rabbit mAb
Host Species	Recombinant Rabbit
Clonality	Monoclonal antibody
Clone No.	JU93-81
Purification	ProA affinity purified
Applications	WB,ICC,IF,IP,IHC,FC
Species Reactivity	Hu
Immunogen Description	Recombinant protein
Other Names	antigen CD11b (p170) antibody Antigen CD11b p170 antibody CD11 antigen like family member B antibody CD11 antigen-like family member B antibody CD11b antibody CD11b/CD18 antibody CD49d antibody Cell surface glycoprotein MAC-1 subunit alpha antibody Complement component 3 receptor 3 subunit antibody Complement Component Receptor 3 Alpha antibody Complement receptor type 3, alpha subunit antibody CR 3 alpha chain (CR3A) antibody CR 3 alpha chain antibody CR-3 alpha chain antibody CR3 antibody CR3A antibody F730045J24Rik antibody Integrin Alpha M antibody Integrin alpha M chain antibody Integrin alpha-M antibody Integrin beta 2 alpha subunit antibody Integrin subunit alpha M antibody integrin, alpha M (complement component 3 receptor 3 subunit) antibody ITAM_HUMAN antibody ITGAM antibody Leukocyte adhesion receptor MO1 antibody Ly-40 antibody MAC 1 antibody Mac-1a antibody MAC1 antibody Mac1, alpha subunit antibody MAC1A antibody Macrophage antigen alpha polypeptide antibody MGC117044 antibody Mo1, alpha subunit antibody MO1A antibody Neutrophil adherence receptor alpha M subunit antibody Neutrophil adherence receptor antibody SLEB6 antibody
Accession No.	Swiss-Prot#:P11215
Uniprot	P11215
GeneID	3684;
Calculated MW	170 kDa
Formulation	1*TBS (pH7.4), 1%BSA, 40%Glycerol. Preservative: 0.05% Sodium Azide.
Storage	Store at -20°C

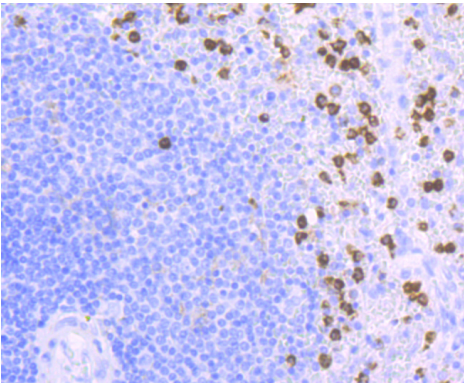
Application Details

IHC: 1:50-1:200 ICC: 1:50-1:200FC: 1:50-1:100

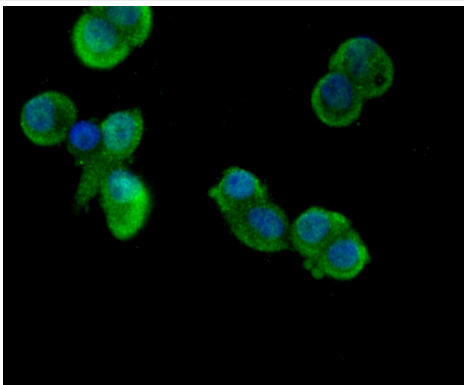
Images



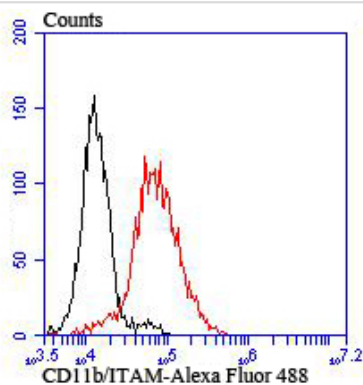
Immunohistochemical analysis of paraffin-embedded human tonsil tissue using anti-CD11b antibody. Counter stained with hematoxylin.



Immunohistochemical analysis of paraffin-embedded human spleen tissue using anti-CD11b antibody. Counter stained with hematoxylin.



ICC staining CD11b in LOVO cells (green). The nuclear counter stain is DAPI (blue). Cells were fixed in paraformaldehyde, permeabilised with 0.25% Triton X100/PBS.



Flow cytometric analysis of THP-1 cells with CD11b antibody at 1/100 dilution (red) compared with an unlabelled control (cells without incubation with primary antibody; black). Alexa Fluor 488-conjugated goat anti rabbit IgG was used as the secondary antibody.

Background

Integrin α M, also designated complement component receptor-3 α , CD11b (p170), macrophage antigen a polypeptide, cell surface glycoprotein Mac-1 a subunit, MAC1A, MO1A and ITGAM) is a cell adhesion molecule that acts as a receptor for cell surface ligands such as intracellular adhesion molecules (ICAMs) or soluble ligands. Integrins are heterodimeric proteins that contain an α chain and β chain. Integrin α M combines with the Integrin β 2 to form a leukocyte-specific integrin referred to as macrophage receptor 1 (Mac-1), or inactivated-C3b (iC3b) receptor 3 (CR3). Integrin α M/ β 2 is important in the adherence of neutrophils and monocytes to stimulated endothelium, and also in the phagocytosis of complement coated particles.

References

Note: This product is for in vitro research use only