

LOXL2 Rabbit mAb

Catalog No: #49699

Package Size: #49699-1 50ul #49699-2 100ul

Orders: order@signalwayantibody.com

Support: tech@signalwayantibody.com

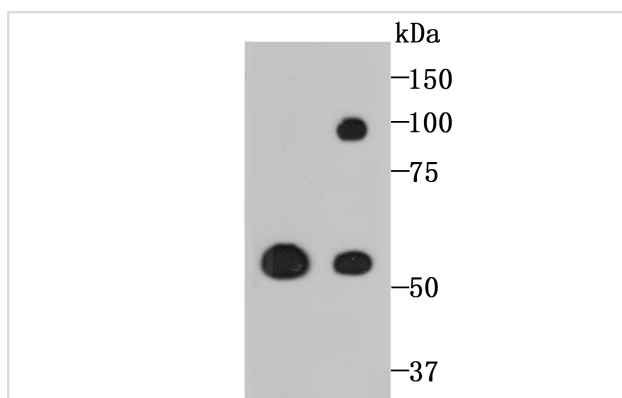
Description

Product Name	LOXL2 Rabbit mAb
Host Species	Recombinant Rabbit
Clonality	Monoclonal antibody
Clone No.	JU32-53
Purification	ProA affinity purified
Applications	WB,ICC,IF,IHC,FC
Species Reactivity	Hu, Ms, Rt
Immunogen Description	Recombinant protein
Other Names	LOR 2 antibody LOR2 antibody LOX L2 antibody LOXL 2 antibody LOXL2 antibody LOXL2_HUMAN antibody Lysyl oxidase homolog 2 antibody Lysyl oxidase like 2 antibody Lysyl oxidase like protein 2 antibody Lysyl oxidase related 2 antibody Lysyl oxidase related protein 2 antibody Lysyl oxidase related protein WS9 14 antibody Lysyl oxidase-like protein 2 antibody Lysyl oxidase-related protein 2 antibody Lysyl oxidase-related protein WS9-14 antibody WS9 14 antibody
Accession No.	Swiss-Prot#:Q9Y4K0
Uniprot	Q9Y4K0
GeneID	4017;
Calculated MW	87 kDa, additional band 55 kDa
Formulation	1*TBS (pH7.4), 1%BSA, 40%Glycerol. Preservative: 0.05% Sodium Azide.
Storage	Store at -20°C

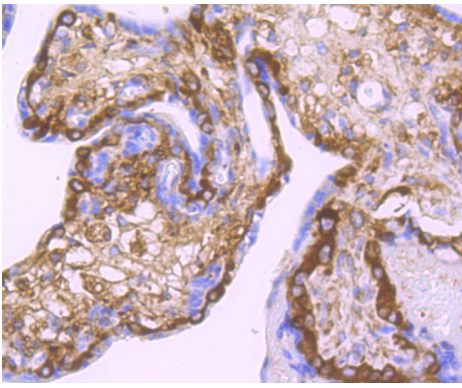
Application Details

WB: 1:500-1:2,000 IHC: 1:50-1:100 ICC: 1:50-1:200FC: 1:50-1:100

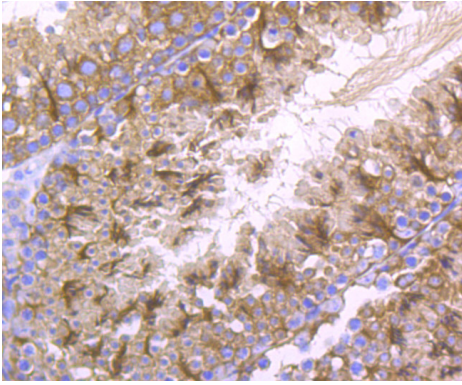
Images



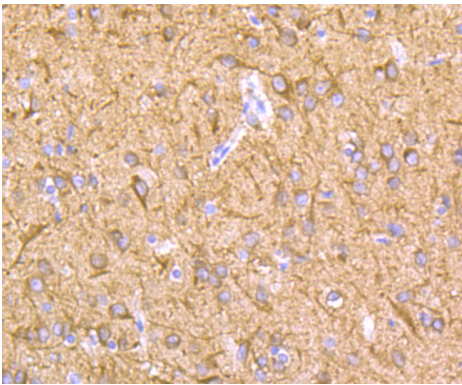
Western blot analysis of LOXL2 on PC-12 and A549 cell lysates using anti-LOXL2 antibody at 1/500 dilution.



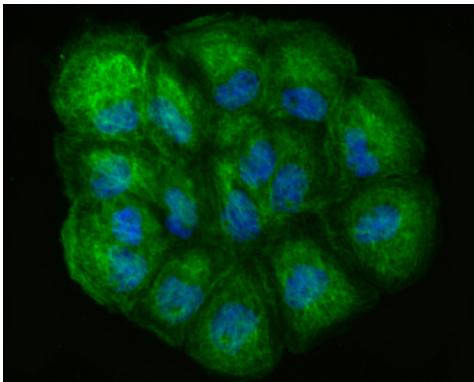
Immunohistochemical analysis of paraffin-embedded human placenta tissue using anti-LOXL2 antibody. Counter stained with hematoxylin.



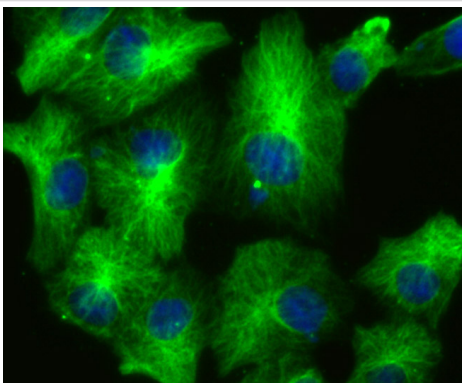
Immunohistochemical analysis of paraffin-embedded mouse testis tissue using anti-LOXL2 antibody. Counter stained with hematoxylin.



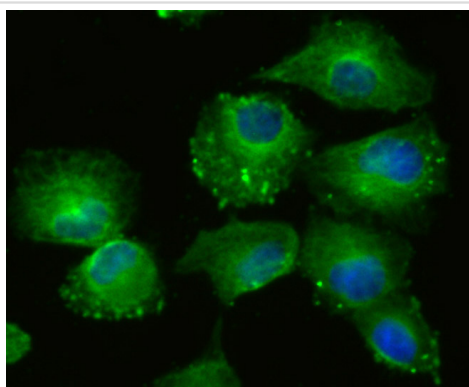
Immunohistochemical analysis of paraffin-embedded rat brain tissue using anti-LOXL2 antibody. Counter stained with hematoxylin.



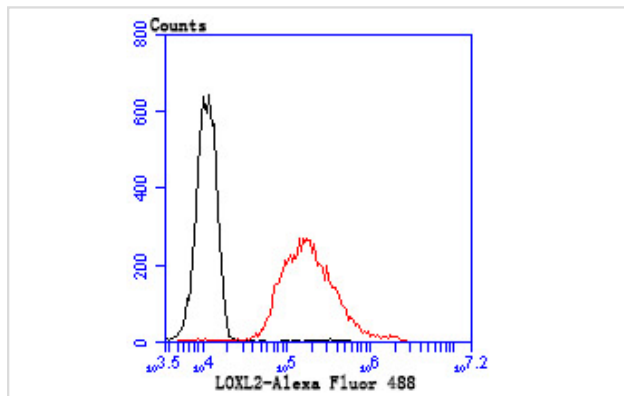
ICC staining LOXL2 in A431 cells (green). The nuclear counter stain is DAPI (blue). Cells were fixed in paraformaldehyde, permeabilised with 0.25% Triton X100/PBS.



ICC staining LOXL2 in A549 cells (green). The nuclear counter stain is DAPI (blue). Cells were fixed in paraformaldehyde, permeabilised with 0.25% Triton X100/PBS.



ICC staining LOXL2 in HUVEC cells (green). The nuclear counter stain is DAPI (blue). Cells were fixed in paraformaldehyde, permeabilised with 0.25% Triton X100/PBS.



Flow cytometric analysis of A549 cells with LOXL2 antibody at 1/100 dilution (red) compared with an unlabelled control (cells without incubation with primary antibody; black). Alexa Fluor 488-conjugated goat anti rabbit IgG was used as the secondary antibody.

Background

Mediates the post-translational oxidative deamination of lysine residues on target proteins leading to the formation of deaminated lysine (allysine). When secreted in extracellular matrix, promotes cross-linking of extracellular matrix proteins by mediating oxidative deamination of peptidyl lysine residues in precursors to fibrous collagen and elastin. Acts as a regulator of sprouting angiogenesis, probably via collagen IV scaffolding. When nuclear, acts as a transcription corepressor and specifically mediates deamination of trimethylated 'Lys-4' of histone H3 (H3K4me3), a specific tag for epigenetic transcriptional activation. Involved in epithelial to mesenchymal transition (EMT) via interaction with SNAI1 and participates in repression of E-cadherin, probably by mediating deamination of histone H3. Also involved in E-cadherin repression following hypoxia, a hallmark of epithelial to mesenchymal transition believed to amplify tumor aggressiveness, suggesting that it may play a role in tumor progression. Acts as a regulator of chondrocyte differentiation, probably by regulating expression of factors that control chondrocyte differentiation.

References

Note: This product is for in vitro research use only