

Plexin A1 Rabbit mAb

Catalog No: #49704

Package Size: #49704-1 50ul #49704-2 100ul

Orders: order@signalwayantibody.comSupport: tech@signalwayantibody.com

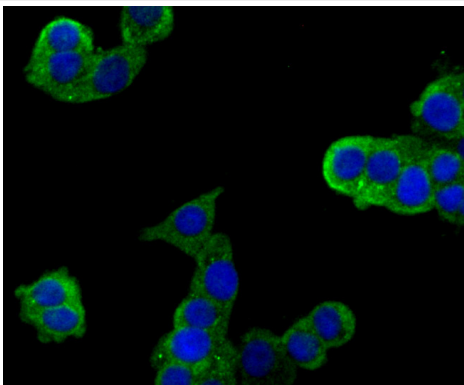
Description

Product Name	Plexin A1 Rabbit mAb
Host Species	Recombinant Rabbit
Clonality	Monoclonal antibody
Clone No.	JU50-37
Purification	ProA affinity purified
Applications	WB,ICC,FC
Species Reactivity	Hu, Ms, Rt
Immunogen Description	Recombinant protein
Other Names	NOV antibody NOV/plexin A1 protein antibody NOV antibody Plexin-A1 antibody Plexin1 antibody PlexinA1 antibody PLXA1_HUMAN antibody PLXN1 antibody Plxna1 antibody PLXNA1 protein antibody Semaphorin receptor NOV antibody
Accession No.	Swiss-Prot#:Q9UIW2
Uniprot	Q9UIW2
GeneID	5361;
Calculated MW	211 kDa
Formulation	1*TBS (pH7.4), 1%BSA, 40%Glycerol. Preservative: 0.05% Sodium Azide.
Storage	Store at -20°C

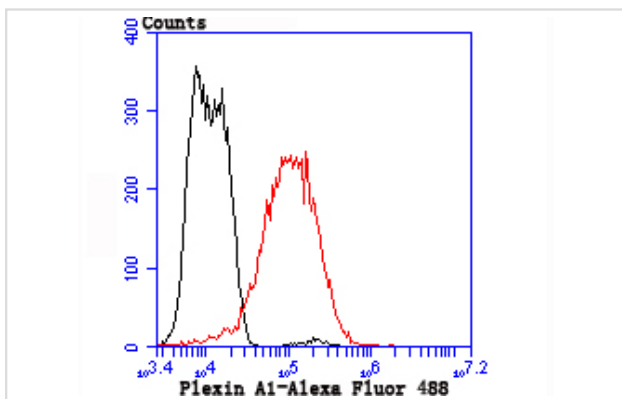
Application Details

ICC: 1:50-1:200 FC: 1:50-1:100

Images



ICC staining Plexin A1 in LOVO cells (green). The nuclear counter stain is DAPI (blue). Cells were fixed in paraformaldehyde, permeabilised with 0.25% Triton X100/PBS.



Flow cytometric analysis of LOVO cells with Plexin A1 antibody at 1/50 dilution (red) compared with an unlabelled control (cells without incubation with primary antibody; black). Alexa Fluor 488-conjugated goat anti rabbit IgG was used as the secondary antibody.

Background

Coreceptor for SEMA3A, SEMA3C, SEMA3F and SEMA6D. Necessary for signaling by class 3 semaphorins and subsequent remodeling of the cytoskeleton. Plays a role in axon guidance, invasive growth and cell migration. Class 3 semaphorins bind to a complex composed of a neuropilin and a plexin. The plexin modulates the affinity of the complex for specific semaphorins, and its cytoplasmic domain is required for the activation of down-stream signaling events in the cytoplasm.

References

Note: This product is for in vitro research use only