

SAMHD1 Rabbit mAb

Catalog No: #49710



Package Size: #49710-1 50ul #49710-2 100ul

Orders: order@signalwayantibody.com
Support: tech@signalwayantibody.com

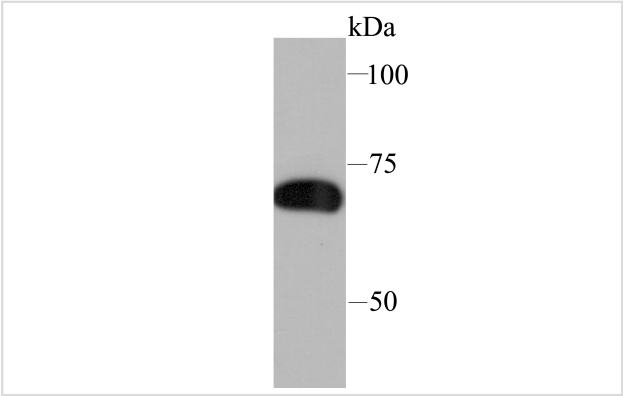
Description

Product Name	SAMHD1 Rabbit mAb
Host Species	Recombinant Rabbit
Clonality	Monoclonal antibody
Clone No.	JU56-04
Purification	ProA affinity purified
Applications	WB,ICC,IHC,FC
Species Reactivity	Hu
Immunogen Description	Recombinant protein
Other Names	CHBL2 antibody DCIP antibody Dendritic cell derived IFNG induced protein antibody Dendritic cell-derived IFNG-induced protein antibody Deoxynucleoside triphosphate triphosphohydrolase SAMHD1 antibody dNTPase antibody HD domain containing 1 antibody HDDC1 antibody Mg11 antibody Monocyte protein 5 antibody MOP 5 antibody MOP-5 antibody MOP5 antibody OTTHUMP00000030889 antibody SAM domain and HD domain 1 antibody SAM domain and HD domain containing protein 1 antibody SAM domain and HD domain-containing protein 1 antibody SAMH1_HUMAN antibody Samhd1 antibody SBBI88 antibody
Accession No.	Swiss-Prot#:Q9Y3Z3
Uniprot	Q9Y3Z3
GeneID	25939;
Calculated MW	72 kDa
Formulation	1*TBS (pH7.4), 1%BSA, 40%Glycerol. Preservative: 0.05% Sodium Azide.
Storage	Store at -20°C

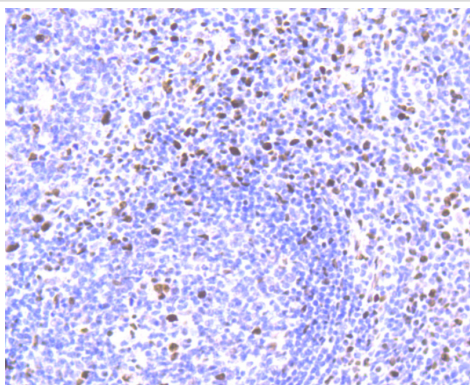
Application Details

WB: 1:500-1:2,000IHC: 1:50-1:200ICC: 1:100-1:500FC: 1:50-1:100

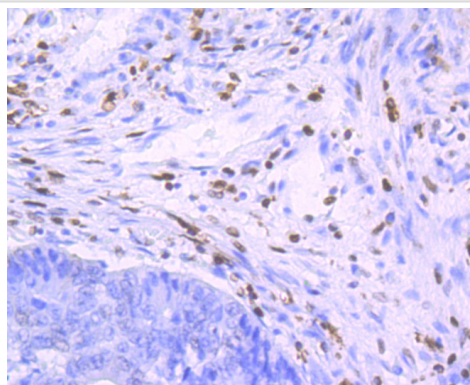
Images



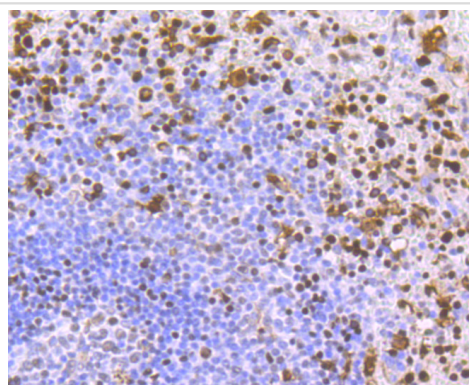
Western blot analysis of SAMHD1 on THP-1 cell lysate using anti-SAMHD1 antibody at 1/1,000 dilution.



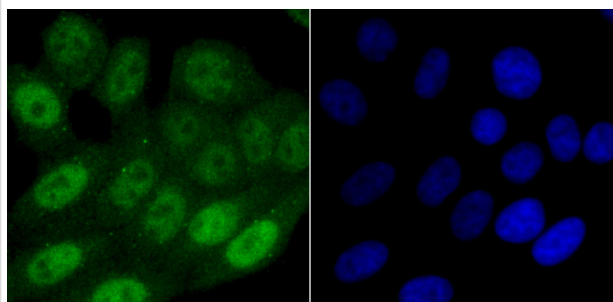
Immunohistochemical analysis of paraffin-embedded human tonsil tissue using anti-SAMHD1 antibody. Counter stained with hematoxylin.



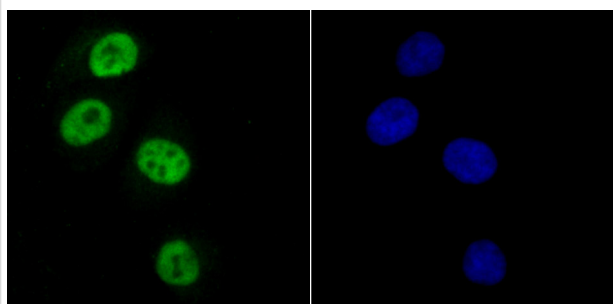
Immunohistochemical analysis of paraffin-embedded human colon cancer tissue using anti-SAMHD1 antibody. Counter stained with hematoxylin.



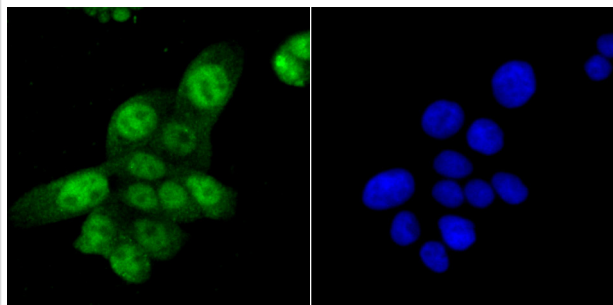
Immunohistochemical analysis of paraffin-embedded human spleen tissue using anti-SAMHD1 antibody. Counter stained with hematoxylin.



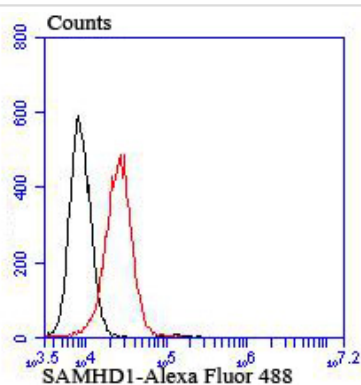
ICC staining SAMHD1 in HepG2 cells (green). The nuclear counter stain is DAPI (blue). Cells were fixed in paraformaldehyde, permeabilised with 0.25% Triton X100/PBS.



ICC staining SAMHD1 in HUVEC cells (green). The nuclear counter stain is DAPI (blue). Cells were fixed in paraformaldehyde, permeabilised with 0.25% Triton X100/PBS.



ICC staining SAMHD1 in LOVO cells (green). The nuclear counter stain is DAPI (blue). Cells were fixed in paraformaldehyde, permeabilised with 0.25% Triton X100/PBS.



Flow cytometric analysis of K562 cells with SAMHD1 antibody at 1/100 dilution (red) compared with an unlabelled control (cells without incubation with primary antibody; black).

Background

SAM domain and HD domain-containing protein 1 is a protein that in humans is encoded by the SAMHD1 gene. SAMHD1 is a cellular enzyme, responsible for blocking replication of HIV in dendritic cells, macrophages and monocytes. It is an enzyme that exhibits phosphohydrolase activity, converting deoxynucleoside triphosphates (dNTPs) to inorganic phosphate (iPPP) and a 2'-deoxynucleoside (i.e. deoxynucleosides without a phosphate group). In doing so, SAMHD1 depletes the pool of dNTPs available to a reverse transcriptase for viral cDNA synthesis and thus prevents viral replication. SAMHD1 has also shown nuclease activity. Although a ribonuclease activity was described to be required for HIV-1 restriction, recent data confirmed that SAMHD1-mediated HIV-1 restriction in cells does not involve ribonuclease activity.

References

Note: This product is for in vitro research use only