

Apg3 Antibody

Catalog No: #49715

Package Size: #49715-1 50ul #49715-2 100ul

Orders: order@signalwayantibody.com

Support: tech@signalwayantibody.com

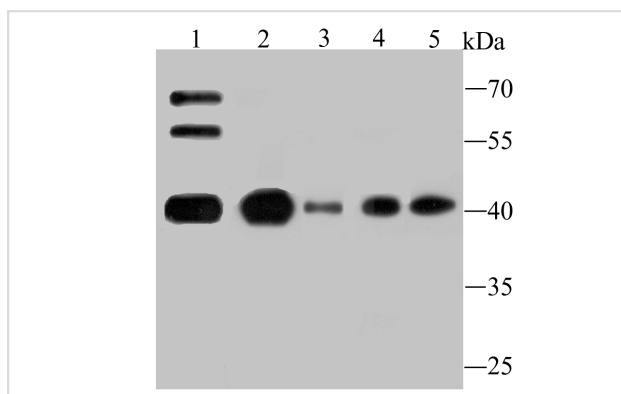
Description

Product Name	Apg3 Antibody
Host Species	Rabbit
Clonality	Monoclonal
Clone No.	JU00-35
Purification	ProA affinity purified
Applications	WB,IHC
Species Reactivity	Hu, Ms, Rt
Immunogen Description	Recombinant protein
Other Names	2610016C12Rik antibody Apg 3 antibody APG3 antibody APG3 autophagy 3 like antibody APG3 like antibody APG3, S. cerevisiae, homolog of antibody APG3-like antibody APG3L antibody Apg3p antibody ATG 3 antibody ATG3 antibody ATG3 autophagy related 3 homolog antibody ATG3 autophagy related 3 homolog (S. cerevisiae) antibody ATG3_HUMAN antibody Autophagy 3, S. cerevisiae, homolog of antibody Autophagy Apg3p/Aut1p like antibody autophagy related 3 antibody Autophagy related protein 3 antibody Autophagy-related protein 3 antibody DKFZp564M1178 antibody FLJ22125 antibody hApg3 antibody MGC15201 antibody OTTHUMP00000214547 antibody OTTHUMP00000214548 antibody PC3 96 antibody Protein PC3-96 antibody Ubiquitin-like-conjugating enzyme ATG3 antibody
Accession No.	Swiss-Prot#:Q9NT62
Uniprot	Q9NT62
GeneID	64422;
Calculated MW	40 kDa
Formulation	1*TBS (pH7.4), 1%BSA, 40%Glycerol. Preservative: 0.05% Sodium Azide.
Storage	Store at -20°C

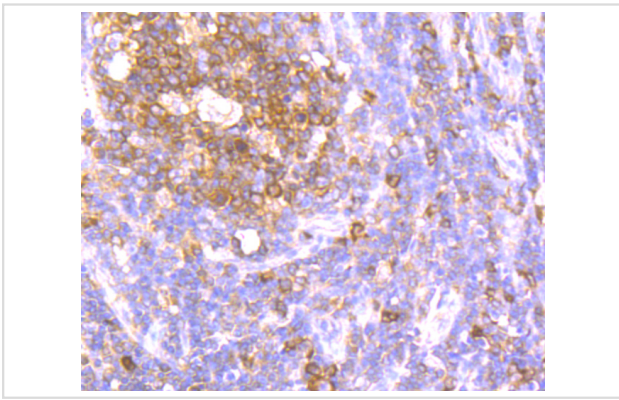
Application Details

WB: 1:500-1:2,000 IHC: 1:50-1:200

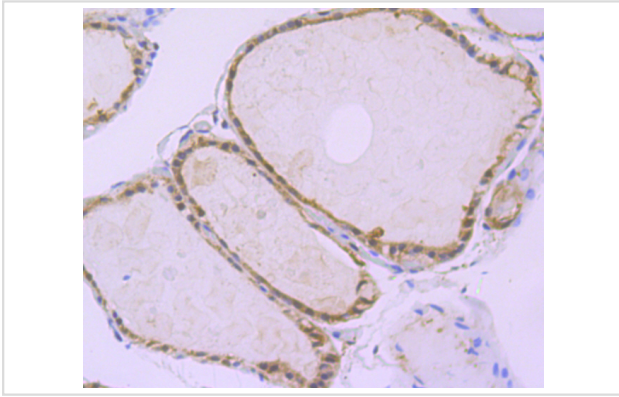
Images



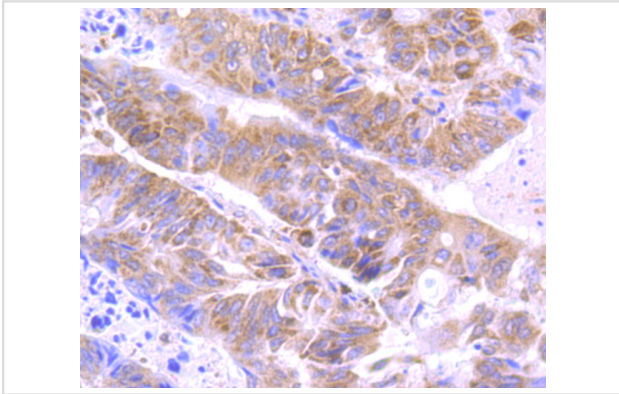
Western blot analysis of Apg3 on different lysates using anti-Apg3 antibody at 1/500 dilution.
 Positive control:
 Lane 1: Mouse testis tissue
 Lane 2: K562
 Lane 3: HL-60
 Lane 4: Hela
 Lane 5: Jurkat



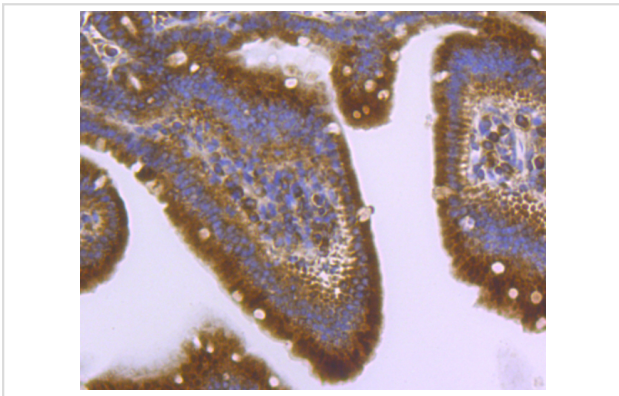
Immunohistochemical analysis of paraffin-embedded human tonsil tissue using anti-Apg3 antibody. Counter stained with hematoxylin.



Immunohistochemical analysis of paraffin-embedded human thyroid gland tissue using anti-Apg3 antibody. Counter stained with hematoxylin.



Immunohistochemical analysis of paraffin-embedded human colon cancer tissue using anti-Apg3 antibody. Counter stained with hematoxylin.



Immunohistochemical analysis of paraffin-embedded mouse small intestine tissue using anti-Apg3 antibody. Counter stained with hematoxylin.

Background

Atg3 (autophagy-related protein 3), also known as APG3-like, hAPG3 or PC3-96, is an E2-like enzyme that localizes to the cytoplasm and is expressed in a variety of tissues with predominant levels found in kidney, placenta, liver, heart and skeletal muscle. Atg3 catalyzes the formation of the Atg8-phosphatidylethanolamine (Atg8-PE) conjugate, a reaction that is essential for autophagy (a cellular process that allows for the degradation of organelles and bulk cellular proteins). The process of forming the Atg8-PE conjugate begins with the removal of the C-terminal arginine residue of Atg8 by Atg4, a cysteine protease. The, now exposed, glycine residue is then activated by Atg7 and is then transferred to Atg3 for the final conjugation to PE. This last step can be accelerated by the presence of the Atg12-Atg5 conjugate which functions similarly to an E3 enzyme.

References

Note: This product is for in vitro research use only