

WASL Rabbit mAb

Catalog No: #49725



Package Size: #49725-1 50ul #49725-2 100ul

Orders: order@signalwayantibody.comSupport: tech@signalwayantibody.com

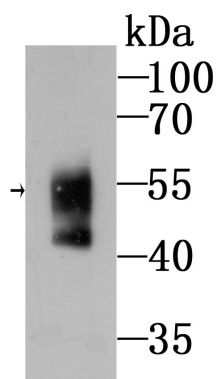
Description

Product Name	WASL Rabbit mAb
Host Species	Recombinant Rabbit
Clonality	Monoclonal antibody
Clone No.	JU07-31
Purification	ProA affinity purified
Applications	WB,ICC,IHC,FC
Species Reactivity	Hu, Ms
Immunogen Description	Recombinant protein
Other Names	WASP family, verprolin homology domain-containing protein 1 antibody WASP family member 1 antibody FLJ31482 antibody homology of dictyostelium scar 1 antibody KIAA0269 antibody Protein WAVE-1 antibodyv Protein WAVE1 antibody scar, Dictyostelium, homology of, 1 antibody SCAR1 antibody Similar to a plant extensin like protein antibody Verprolin homology domain containing protein 1 antibody Verprolin homology domain-containing protein 1 antibody WAS protein family, member 1 antibody Wasf1 antibody WASF1_HUMAN antibody WASL antibody WASP family 1 antibody WASP family protein member 1 antibody WASP family, verprolin homology domain-containing protein antibody WAVE antibody WAVE1 antibody Wiskott Aldrich syndrome protein family member 1 antibody Wiskott-Aldrich syndrome protein family member 1 antibody
Accession No.	Swiss-Prot#:O00401
Uniprot	O00401
GeneID	8976;
Calculated MW	55 kDa
Formulation	1*TBS (pH7.4), 1%BSA, 40%Glycerol. Preservative: 0.05% Sodium Azide.
Storage	Store at -20°C

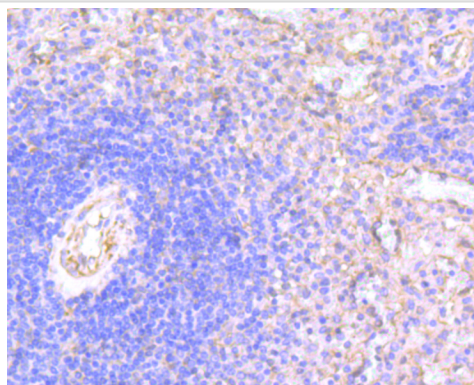
Application Details

WB: 1:500-1:2,000IHC: 1:50-1:200ICC: 1:50-1:200FC: 1:50-1:100

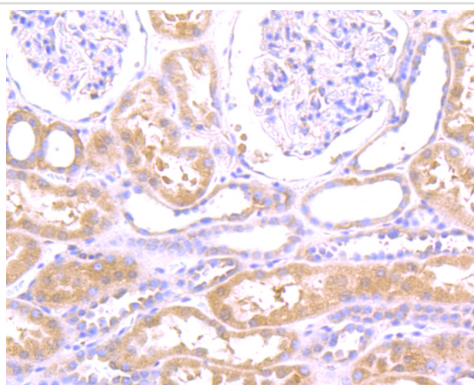
Images



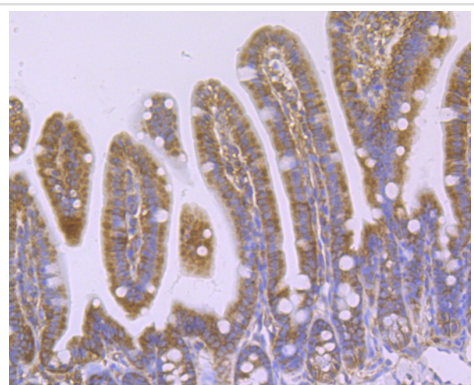
Western blot analysis of WASL on mouse Human serum lysates using anti-Ubiquitin antibody at 1/500 dilution.



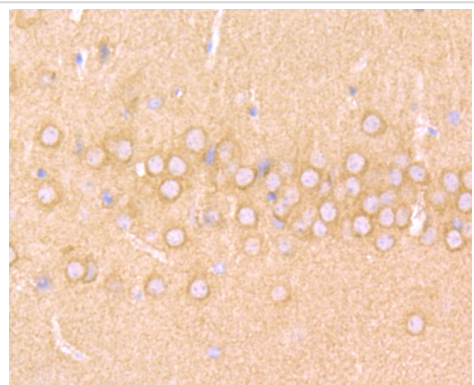
Immunohistochemical analysis of paraffin-embedded human spleen tissue using anti-WASL antibody. Counter stained with hematoxylin.



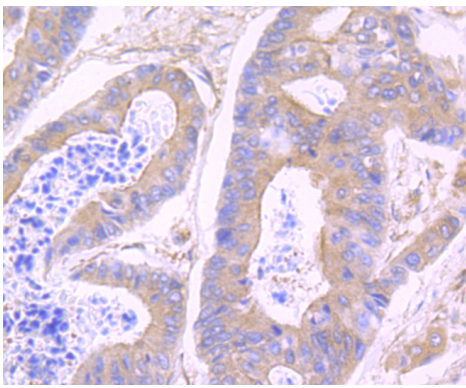
Immunohistochemical analysis of paraffin-embedded human kidney tissue using anti-WASL antibody. Counter stained with hematoxylin.



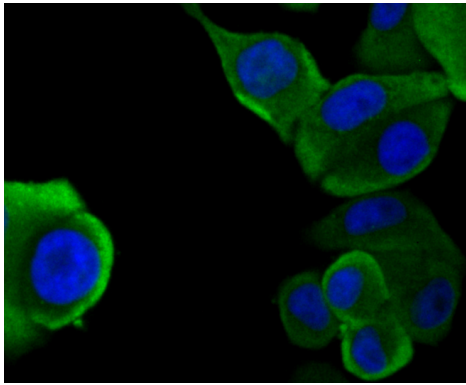
Immunohistochemical analysis of paraffin-embedded mouse colon tissue using anti-WASL antibody. Counter stained with hematoxylin.



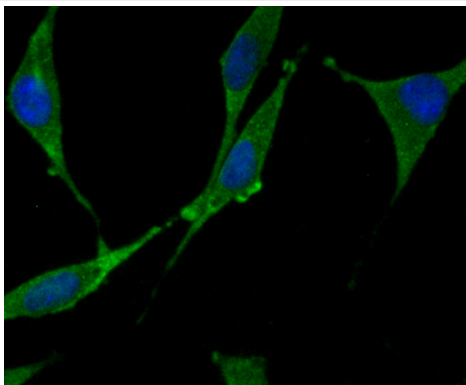
Immunohistochemical analysis of paraffin-embedded mouse brain tissue using anti-WASL antibody. Counter stained with hematoxylin.



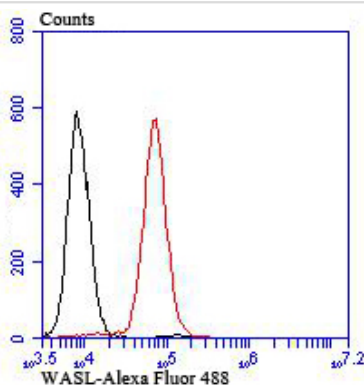
Immunohistochemical analysis of paraffin-embedded human colon cancer tissue using anti-WASL antibody. Counter stained with hematoxylin.



ICC staining WASL in SK-BR-3 cells (green). The nuclear counter stain is DAPI (blue). Cells were fixed in paraformaldehyde, permeabilised with 0.25% Triton X100/PBS.



ICC staining WASL in SH-SY5Y cells (green). The nuclear counter stain is DAPI (blue). Cells were fixed in paraformaldehyde, permeabilised with 0.25% Triton X100/PBS.



Flow cytometric analysis of K562 cells with WASL antibody at 1/100 dilution (red) compared with an unlabelled control (cells without incubation with primary antibody; black).

Background

This gene encodes a member of the Wiskott-Aldrich syndrome (WAS) protein family. Wiskott-Aldrich syndrome proteins share similar domain structure, and associate with a variety of signaling molecules to alter the actin cytoskeleton. The encoded protein is highly expressed in neural tissues, and interacts with several proteins involved in cytoskeletal organization, including cell division control protein 42 (CDC42) and the actin-related protein-2/3 (ARP2/3) complex. The encoded protein may be involved in the formation of long actin microspikes, and in neurite extension. Regulates actin polymerization by stimulating the actin-nucleating activity of the Arp2/3 complex. Involved in mitosis and cytokinesis, via its role in the regulation of actin polymerization. Binds to HSF1/HSTF1 and forms a complex on heat shock promoter elements (HSE) that negatively regulates HSP90 expression..

References

Note: This product is for in vitro research use only