

Staufen Rabbit mAb

Catalog No: #49727

Package Size: #49727-1 50ul #49727-2 100ul

Orders: order@signalwayantibody.com

Support: tech@signalwayantibody.com

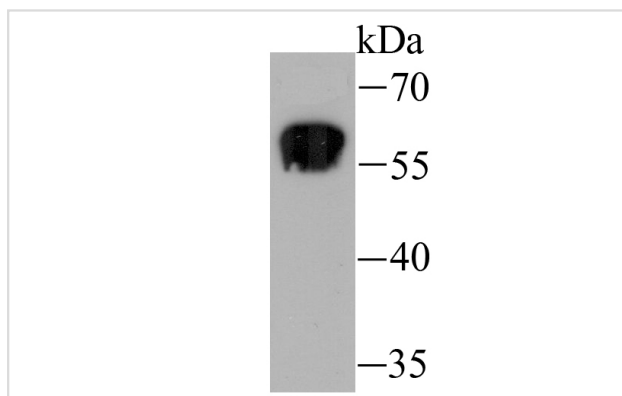
Description

Product Name	Staufen Rabbit mAb
Host Species	Recombinant Rabbit
Clonality	Monoclonal antibody
Clone No.	JU30-85
Purification	ProA affinity purified
Applications	WB, ICC/IF, FC
Species Reactivity	Hu, Ms, Rt
Immunogen Description	Recombinant protein
Other Names	Double stranded RNA binding protein Staufen homolog 1 antibody Double stranded RNA binding protein Staufen homolog antibody Double-stranded RNA-binding protein Staufen homolog 1 antibody FLJ25010 antibody MGC124588 antibody PPP1R150 antibody STAU antibody STAU1 antibody STAU1_HUMAN antibody staufen antibody Staufen RNA binding protein (Drosophila) antibody Staufen RNA binding protein homolog 1 antibody Staufen, Drosophila, homolog of, 1 antibody Staufen, RNA binding protein, homolog 1 (Drosophila) antibody staufen-like antibody
Accession No.	Swiss-Prot#:O95793
Uniprot	O95793
GeneID	6780;
Calculated MW	63 kDa
Formulation	1*TBS (pH7.4), 1%BSA, 40%Glycerol. Preservative: 0.05% Sodium Azide.
Storage	Store at -20°C

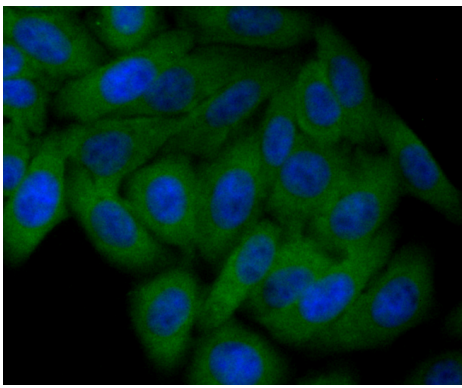
Application Details

WB: 1:500-1:2,000 ICC/IF: 1:50-1:200 FC: 1:50-1:100

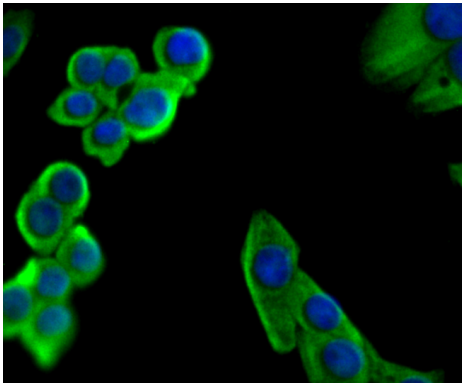
Images



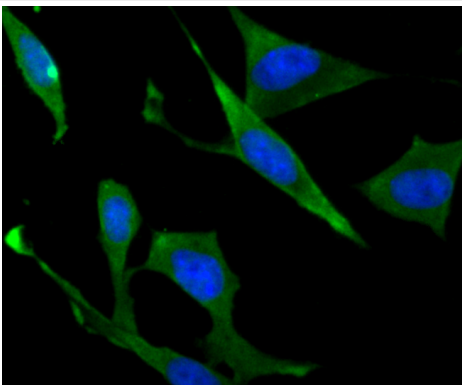
Western blot analysis of Staufen on K562 cell using anti-Staufen antibody at 1/1,000 dilution.



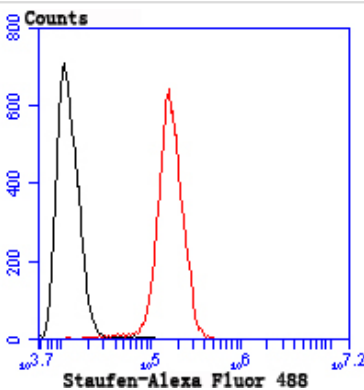
ICC staining Staufen in HepG2 cells (green). The nuclear counter stain is DAPI (blue). Cells were fixed in paraformaldehyde, permeabilised with 0.25% Triton X100/PBS.



ICC staining Staufen in LOVO cells (green). The nuclear counter stain is DAPI (blue). Cells were fixed in paraformaldehyde, permeabilised with 0.25% Triton X100/PBS.



ICC staining Staufen in SH-SY5Y cells (green). The nuclear counter stain is DAPI (blue). Cells were fixed in paraformaldehyde, permeabilised with 0.25% Triton X100/PBS.



Flow cytometric analysis of SH-SY5Y cells with Staufen antibody at 1/50 dilution (red) compared with an unlabelled control (cells without incubation with primary antibody; black). Alexa Fluor 488-conjugated goat anti rabbit IgG was used as the secondary antibody.

Background

STAU1 (staufen, RNA binding protein, homolog 1) is a 577 amino acid protein that contains three double-stranded RNA-binding domains and is a mammalian homolog of Staufen, a *Drosophila* protein that is involved in mRNA transport during oogenesis and zygotic development. Localized to the rough endoplasmic reticulum (RER) and expressed in a variety of tissues, including heart, brain, liver, lung, pancreas, kidney and placenta, STAU1 binds to both Tubulin and double-stranded RNA and is thought to play an important role in mRNA transport from the microtubule network to the RER. Additionally, STAU1 may be involved in cross-linking cytoskeletal components with RNA, an event that is important for proper mRNA positioning during translation. Alternative splicing of the STAU1 gene yields two STAU1 isoforms, designated short and long.

References

Note: This product is for in vitro research use only