

Alpha Fodrin Rabbit mAb

Catalog No: #49730

Package Size: #49730-1 50ul #49730-2 100ul

Orders: order@signalwayantibody.com

Support: tech@signalwayantibody.com

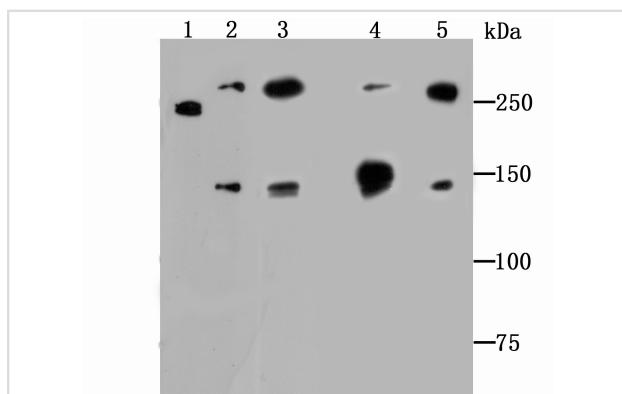
Description

Product Name	Alpha Fodrin Rabbit mAb
Host Species	Recombinant Rabbit
Clonality	Monoclonal antibody
Clone No.	JU32-09
Purification	ProA affinity purified
Applications	WB,IHC
Species Reactivity	Hu, Ms, Rt
Immunogen Description	Recombinant protein
Other Names	(ALPHA)II-SPECTRIN antibody Alpha II Spectrin antibody Alpha-II spectrin antibody brain antibody EIEE5 antibody FLJ17738 antibody FLJ44613 antibody Fodrin alpha chain antibody Fodrin, alpha antibody NEAS antibody Non erythrocytic spectrin alpha antibody non-erythroid alpha chain antibody SPECA antibody Spectrin alpha chain antibody Spectrin alpha chain brain antibody Spectrin alpha non erythrocytic 1 antibody Spectrin antibody Spectrin non erythroid alpha chain antibody Spectrin, alpha, non-erythrocytic 1 (alpha-fodrin) antibody Spectrin, nonerythroid, alpha subunit antibody Spna2 antibody SPTA 2 antibody SPTA2 antibody SPTA2_HUMAN antibody SPTAN 1 antibody SPTAN1 antibody
Accession No.	Swiss-Prot#:Q13813
Uniprot	Q13813
GeneID	6709;
Calculated MW	285/150 kDa
Formulation	1*TBS (pH7.4), 1%BSA, 40%Glycerol. Preservative: 0.05% Sodium Azide.
Storage	Store at -20°C

Application Details

WB: 1:500-1:2,000 IHC: 1:50-1:200

Images



Western blot analysis of Alpha Fodrin on different lysates using anti-Alpha Fodrin antibody at 1/500 dilution.

Positive control:

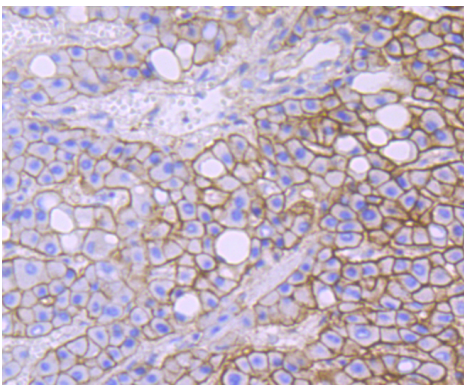
Lane 1: Hela

Lane 2: Jurkat

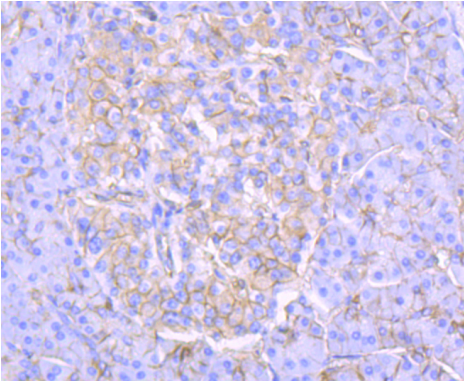
Lane 3: NIH-3T3

Lane 4: Rat brain

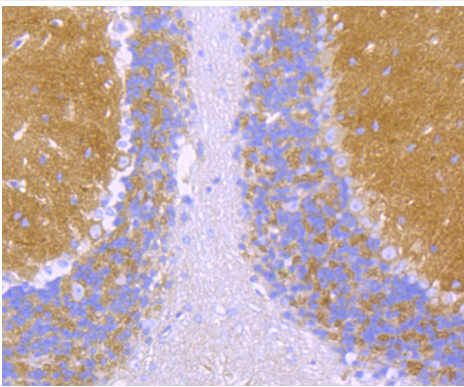
Lane 5: Mouse brain



Immunohistochemical analysis of paraffin-embedded human liver cancer tissue using anti-Alpha Fodrin antibody. Counter stained with hematoxylin.



Immunohistochemical analysis of paraffin-embedded human pancreas tissue using anti-Alpha Fodrin antibody. Counter stained with hematoxylin.



Immunohistochemical analysis of paraffin-embedded mouse cerebellum tissue using anti-Alpha Fodrin antibody. Counter stained with hematoxylin.

Background

Alpha Fodrin also named Spectrin. Spectrin, an actin binding protein that is a major component of the cytoskeletal superstructure of the erythrocyte plasma membrane, is essential in determining the properties of the membrane including its shape and deformability. Spectrins function as membrane organizers and stabilizers, composed of nonhomologous α and β chains, which aggregate side-to-side in an antiparallel fashion to form dimers, tetramers, and higher polymers. Spectrin α I and spectrin β I are present in erythrocytes, whereas spectrin α II (also designated fodrin α) and spectrin β II (also designated fodrin β) are present in other somatic cells. The spectrin tetramers in erythrocytes act as barriers to lateral diffusion, but spectrin dimers seem to lack this function. Activation of calpain results in the breakdown of spectrin α II, a neuronal cytoskeleton protein.

References

Note: This product is for in vitro research use only