

CD66e Polyclonal Antibody

Catalog No: #41581

Package Size: #41581-1 50ul #41581-2 100ul

Orders: order@signalwayantibody.comSupport: tech@signalwayantibody.com

Description

Product Name	CD66e Polyclonal Antibody
Host Species	Rabbit
Clonality	Polyclonal
Purification	The antibody was affinity-purified from rabbit antiserum by affinity-chromatography using epitope-specific immunogen.
Applications	WB ELISA
Species Reactivity	Hu
Specificity	CD66e Polyclonal Antibody detects endogenous levels of CD66e protein.
Immunogen Type	peptide
Immunogen Description	Synthesized peptide derived from the Internal region of human CD66e.
Target Name	CD66e
Other Names	CEACAM5; CEA; Carcinoembryonic antigen-related cell adhesion molecule 5; Carcinoembryonic antigen; CEA; Meconium antigen 100; CD66e
Accession No.	Swiss-Prot: P06731NCBI Gene ID: 1048
Uniprot	P06731
GeneID	1048;
SDS-PAGE MW	76kd
Concentration	1mg/ml
Formulation	Liquid in PBS containing 50% glycerol, 0.5% BSA and 0.02% sodium azide.
Storage	Store at -20°C/1 year

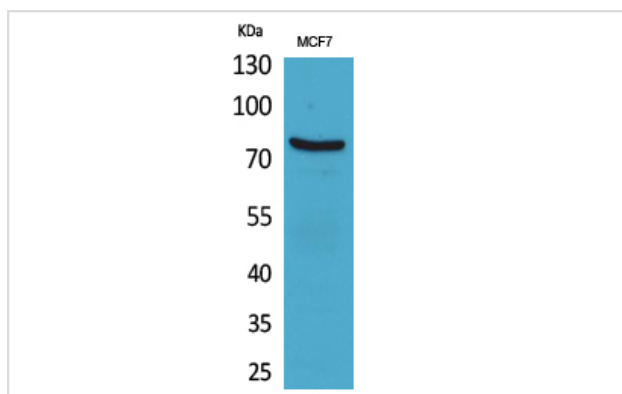
Application Details

Western Blot: 1/500 - 1/2000.

ELISA: 1/20000.

Not yet tested in other applications.

Images



Western Blot analysis of MCF7 cells using CD66e Polyclonal Antibody

Note: This product is for in vitro research use only