

Growth hormone receptor Rabbit mAb

Catalog No: #49735

Package Size: #49735-1 50ul #49735-2 100ul

Orders: order@signalwayantibody.com

Support: tech@signalwayantibody.com

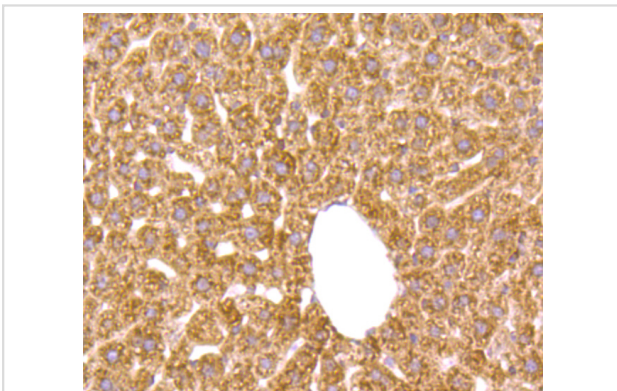
Description

Product Name	Growth hormone receptor Rabbit mAb
Host Species	Recombinant Rabbit
Clonality	Monoclonal antibody
Clone No.	JU01-34
Purification	ProA affinity purified
Applications	WB,ICC,IHC,FC
Species Reactivity	Hu, Ms, Rt
Immunogen Description	Recombinant protein
Other Names	GH receptor antibody GH-binding protein antibody GHBP antibody GHBP, included antibody GHR antibody GHR_HUMAN antibody Growth hormone binding protein antibody Growth hormone receptor antibody Growth hormone receptor precursor antibody Growth hormone-binding protein antibody Growth hormone-binding protein, included antibody Increased responsiveness to growth hormone, included antibody Serum binding protein antibody Serum-binding protein antibody Somatotropin receptor antibody
Accession No.	Swiss-Prot#:P10912
Uniprot	P10912
GeneID	2690;
Calculated MW	71 kDa
Formulation	1*TBS (pH7.4), 1%BSA, 40%Glycerol. Preservative: 0.05% Sodium Azide.
Storage	Store at -20°C

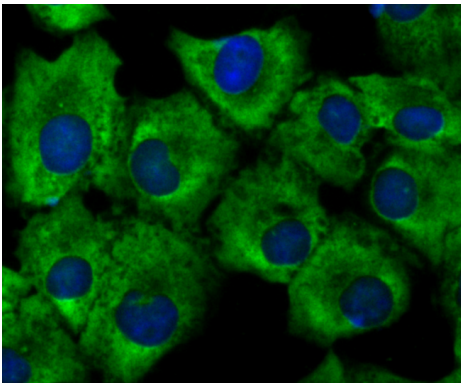
Application Details

IHC: 1:50-1:200ICC: 1:50-1:200FC: 1:50-1:100

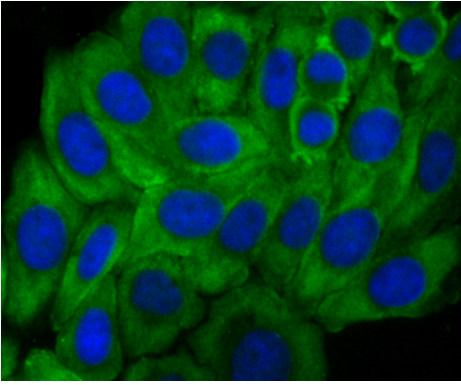
Images



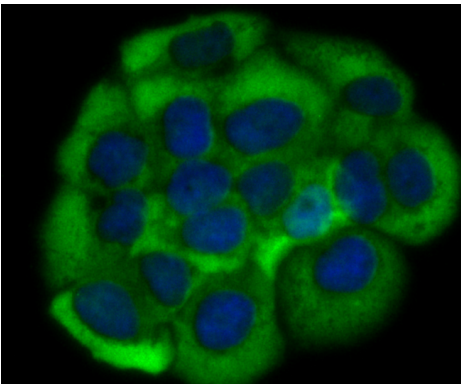
Immunohistochemical analysis of paraffin-embedded mouse liver tissue using anti-Growth hormone receptor antibody. Counter stained with hematoxylin.



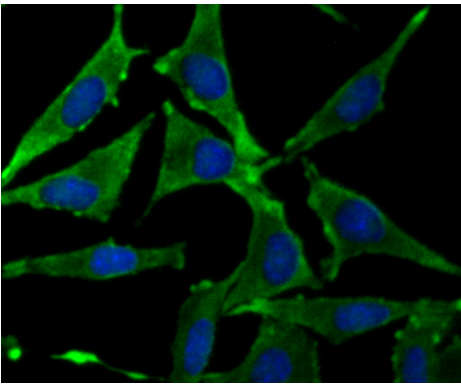
ICC staining Growth hormone receptor in A549 cells (green). The nuclear counter stain is DAPI (blue). Cells were fixed in paraformaldehyde, permeabilised with 0.25% Triton X100/PBS.



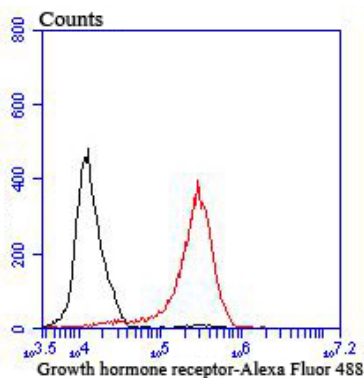
ICC staining Growth hormone receptor in HepG2 cells (green). The nuclear counter stain is DAPI (blue). Cells were fixed in paraformaldehyde, permeabilised with 0.25% Triton X100/PBS.



ICC staining Growth hormone receptor in JAR cells (green). The nuclear counter stain is DAPI (blue). Cells were fixed in paraformaldehyde, permeabilised with 0.25% Triton X100/PBS.



ICC staining Growth hormone receptor in SH-SY5Y cells (green). The nuclear counter stain is DAPI (blue). Cells were fixed in paraformaldehyde, permeabilised with 0.25% Triton X100/PBS.



Flow cytometric analysis of MCF-7 cells with Growth hormone receptor antibody at 1/100 dilution (red) compared with an unlabelled control (cells without incubation with primary antibody; black). Alexa Fluor 488-conjugated goat anti rabbit IgG was used as the secondary antibody.

Background

GHR (growth hormone receptor) binds growth hormone (GH), which is produced by the anterior pituitary and regulates body growth and other metabolic processes. GHR is an integral membrane protein and a member of the cytokine receptor family. A common characteristic of the cytokine receptor family is having soluble forms of the protein. The soluble form of GHR is GH-binding protein (GHBP), which is generated by the proteolytic cleavage of the extracellular domain of GHR (2-4). Reduced levels of GHBP are associated with GH insensitivity syndrome (GHIS) (2,4). GHR has been shown to be transcribed via at least two different promoters, resulting in GHR 1A and GHR 1B. Both GHR 1A and 1B are expressed in liver, whereas GHR 1B is also expressed in muscle, uterus, and ovary tissues.

References

Note: This product is for in vitro research use only