

HLA-DQA1 Rabbit mAb

Catalog No: #49737



Package Size: #49737-1 50ul #49737-2 100ul

Orders: order@signalwayantibody.com

Support: tech@signalwayantibody.com

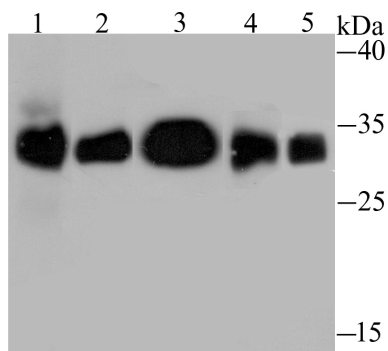
Description

Product Name	HLA-DQA1 Rabbit mAb
Host Species	Recombinant Rabbit
Clonality	Monoclonal antibody
Clone No.	JU17-34
Purification	ProA affinity purified
Applications	WB,IHC,IP
Species Reactivity	Hu, Ms, Rt
Immunogen Description	Recombinant protein
Other Names	CD antibody CELIAC1 antibody DC 1 alpha chain antibody DC alpha antibody DC-1 alpha chain antibody DC-alpha antibody DC1, included antibody DQ alpha 1 chain antibody DQ-A1 antibody DQ-DRW9 alpha chain antibody DQA1_HUMAN antibody FLJ27088 antibody FLJ27328 antibody Gluten-sensitive enteropathy (celiac disease) antibody GSE antibody HLA class II histocompatibility antigen antibody HLA class II histocompatibility antigen, DQ alpha 1 chain antibody HLA class II histocompatibility antigen, DQ(W3) alpha chain antibody HLA-DCA antibody HLA-DQA antibody HLA-DQA1 antibody HLA-DQA1 major histocompatibility complex, class II, DQ alpha 1 antibody HLADC histocompatibility type antibody Immune response antigens Hla, included antibody leucocyte antigen DQA1 antibody leucocyte antigen alpha chain antibody LOC100133678 antibody LOC100507686 antibody LOC100509457 antibody Major histocompatibility complex, class II, DQ alpha 1 antibody MGC149527 antibody MHC class II antigen antibody MHC class II DQA1 antibody MHC class II HLA-D alpha glycoprotein antibody MHC class II HLA-DQ alpha 1 antibody MHC class II surface glycoprotein antibody MHC HLA-DQ alpha antibody OTTHUMP0000029141 antibody OTTHUMP00000176885 antibody OTTHUMP00000178551 antibody OTTHUMP00000178552 antibody OTTHUMP00000233817 antibody
Accession No.	Swiss-Prot#:P01909
Uniprot	P01909
GeneID	3117;
Calculated MW	28 kDa
Formulation	1*TBS (pH7.4), 1%BSA, 40%Glycerol. Preservative: 0.05% Sodium Azide.
Storage	Store at -20°C

Application Details

WB: 1:1,000-5,000IHC: 1:50-1:200IP: 1:10-1:50

Images



Western blot analysis of HLA-DQA1 on different lysates using anti-HLA-DQA1 antibody at 1/1,000 dilution.

Positive control:

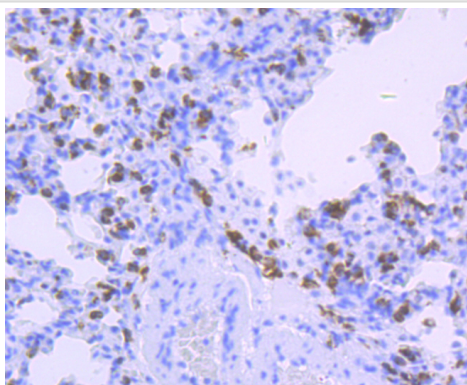
Lane 1: Rat lung

Lane 2: Rat skin

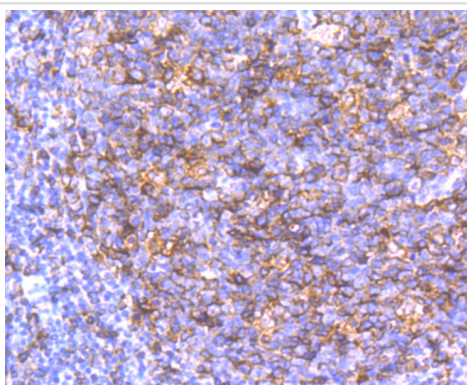
Lane 3: Mouse thymus

Lane 4: Mouse spleen

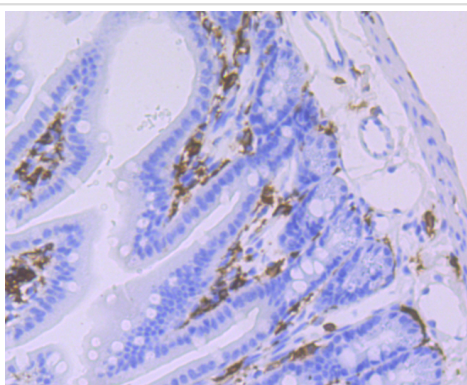
Lane 5: Raji



Immunohistochemical analysis of paraffin-embedded rat lung tissue using anti-HLA-DQA1 antibody. Counter stained with hematoxylin.



Immunohistochemical analysis of paraffin-embedded human tonsil tissue using anti-HLA-DQA1 antibody. Counter stained with hematoxylin.



Immunohistochemical analysis of paraffin-embedded mouse colon tissue using anti-HLA-DQA1 antibody. Counter stained with hematoxylin.

Background

Major histocompatibility complex, class II, DQ alpha 1, also known as HLA-DQA1, is a human gene present on short arm of chromosome 6 (6p21.3) and also denotes the genetic locus which contains this gene. The protein encoded by this gene is one of two proteins that are required to form the DQ heterodimer, a cell surface receptor essential to the function of the immune system. HLA-DQA1 belongs to the HLA class II alpha chain paralogues. This class II molecule is a heterodimer consisting of an alpha (DQA) and a beta chain (DQB), both anchored in the membrane. It plays a central role in the immune system by presenting peptides derived from extracellular proteins. Class II molecules are expressed in antigen-presenting cells.

References

Note: This product is for in vitro research use only