

ACTL6A Rabbit mAb

Catalog No: #49746

Package Size: #49746-1 50ul #49746-2 100ul

Orders: order@signalwayantibody.com

Support: tech@signalwayantibody.com

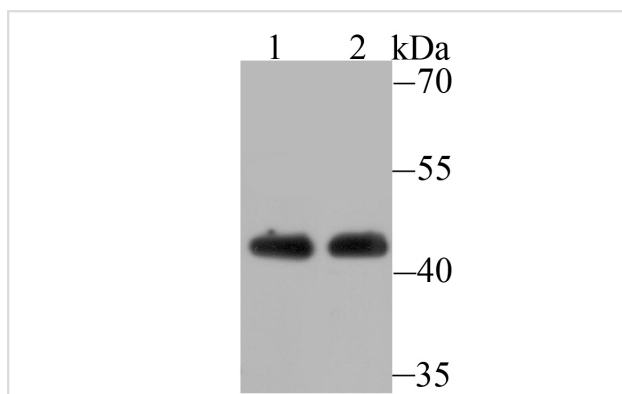
Description

| | |
|-----------------------|--|
| Product Name | ACTL6A Rabbit mAb |
| Host Species | Recombinant Rabbit |
| Clonality | Monoclonal antibody |
| Clone No. | JU40-32 |
| Purification | ProA affinity purified |
| Applications | WB,ICC,IF,IHC,IP |
| Species Reactivity | Hu, Ms |
| Immunogen Description | Recombinant protein |
| Other Names | 53 kDa BRG1 associated factor A antibody 53 kDa BRG1-associated factor A antibody ACL6A_HUMAN antibody Actin like 6A antibody Actin like protein 6A antibody Actin related protein 4 antibody Actin related protein antibody Actin related protein Baf53a antibody Actin-like protein 6A antibody Actin-related protein Baf53a antibody ACTL 6 antibody ACTL 6A antibody ACTL6 antibody ACTL6A antibody Arp4 antibody ARPN BETA antibody ArpNbeta antibody BAF 53A antibody BAF complex 53 kDa subunit antibody BAF53 antibody BAF53A antibody BRG1 associated factor antibody BRG1-associated factor 53A antibody hArpN beta antibody INO80 complex subunit K antibody INO80K antibody MGC5382 antibody |
| Accession No. | Swiss-Prot#:O96019 |
| Uniprot | O96019 |
| GeneID | 86; |
| Calculated MW | 47 kDa |
| Formulation | 1*TBS (pH7.4), 1%BSA, 40%Glycerol. Preservative: 0.05% Sodium Azide. |
| Storage | Store at -20°C |

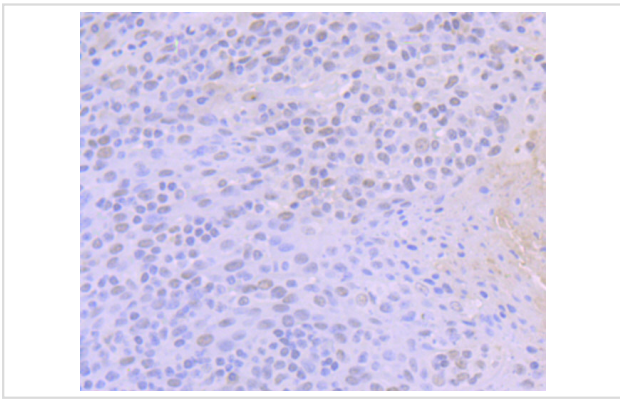
Application Details

WB: 1:500-1:2,000 IHC: 1:50-1:100 ICC/IF: 1:50-1:100IP: 1:10-1:50

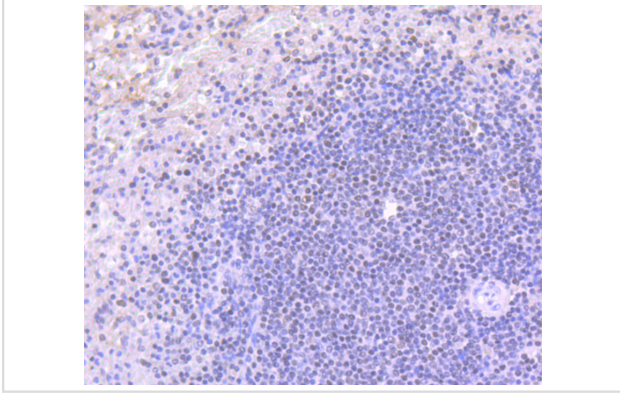
Images



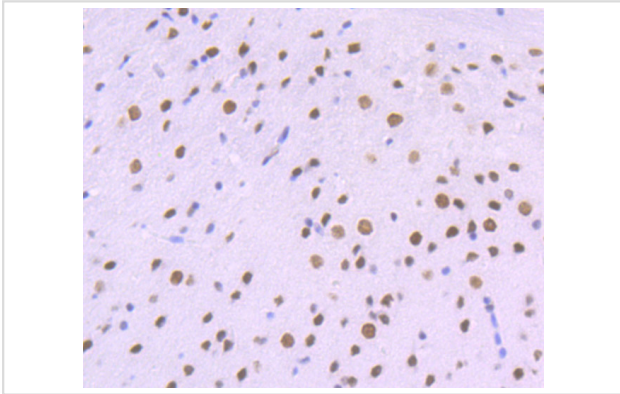
Western blot analysis of ACTL6A on Jurkat cell(1) and mouse brain tissue(2) lysate using anti-ACTL6A antibody at 1/500 dilution.



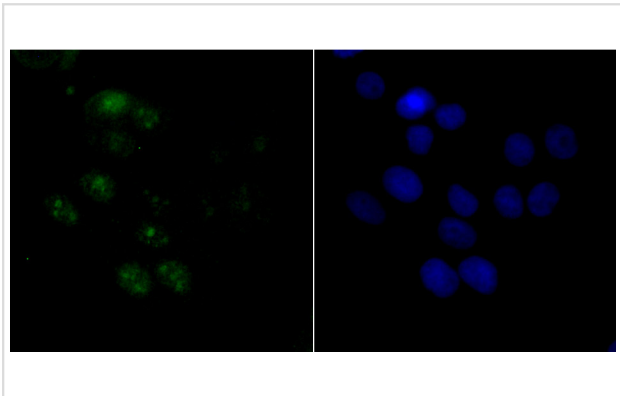
Immunohistochemical analysis of paraffin-embedded human tonsil tissue using anti-ACTL6A antibody. Counter stained with hematoxylin.



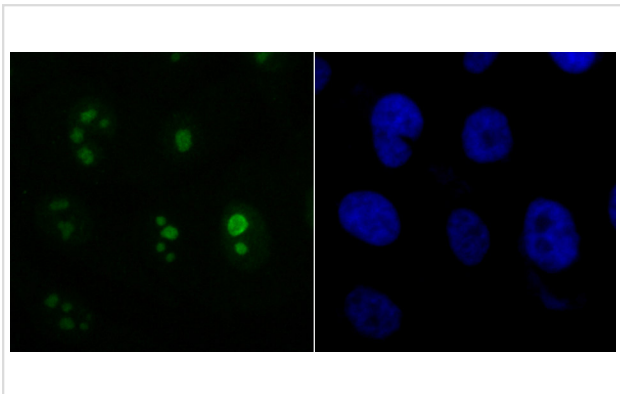
Immunohistochemical analysis of paraffin-embedded human spleen tissue using anti-ACTL6A antibody. Counter stained with hematoxylin.



Immunohistochemical analysis of paraffin-embedded mouse brain tissue using anti-ACTL6A antibody. Counter stained with hematoxylin.



ICC staining ACTL6A in LOVO cells (green). The nuclear counter stain is DAPI (blue). Cells were fixed in paraformaldehyde, permeabilised with 0.25% Triton X100/PBS.



ICC staining ACTL6A in PC-3M cells (green). The nuclear counter stain is DAPI (blue). Cells were fixed in paraformaldehyde, permeabilised with 0.25% Triton X100/PBS.

Background

ACTL6A also named BAF53. The SWI/SNF complex regulates gene expression via ATP-dependent chromatin remodeling. Brm (SNF2-a), Brg-1 (SNF2-b), Ini1 (integrase interactor 1, SNF5), BAF53 (ARPN β), BAF57, BAF155 (SRG3), and BAF170 make up the functional core. BAF53 homologues from yeast to humans contain a conserved N-terminal motif, which contains residues at serine 2 and tyrosine 6, which play important roles in BAF53 activity. The BAF53 protein shuttles between the nucleus and cytoplasm. BAF53 also forms a complex with TIP49 and TIP48, which mediates c-Myc oncogenic activity.

References

Note: This product is for in vitro research use only