

IL13 Receptor alpha 1 Rabbit mAb

Catalog No: #49747

Package Size: #49747-1 50ul #49747-2 100ul

Orders: order@signalwayantibody.com

Support: tech@signalwayantibody.com

Description

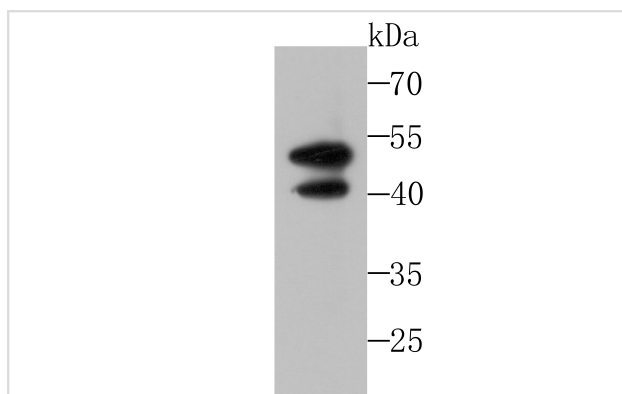
Product Name	IL13 Receptor alpha 1 Rabbit mAb
Host Species	Recombinant Rabbit
Clonality	Monoclonal antibody
Clone No.	JU38-89
Purification	ProA affinity purified
Applications	WB,ICC,IHC
Species Reactivity	Hu
Immunogen Description	Recombinant protein
Other Names	bB128O4.2.1 (interleukin 13 receptor, alpha 1) antibody Cancer/testis antigen 19 antibody CD213a1 antibody CD213A1 Antigen antibody CT 19 antibody CT19 antibody I13R1_HUMAN antibody IL 13 receptor subunit alpha 1 antibody IL 13R alpha 1 antibody IL 13R subunit alpha 1 antibody IL 13Ra antibody IL 13RA1 antibody IL-13 receptor subunit alpha-1 antibody IL-13R subunit alpha-1 antibody IL-13R-alpha-1 antibody IL-13RA1 antibody IL13 receptor alpha 1 chain antibody IL13R antibody IL13RA antibody Il13ra1 antibody Interleukin 13 receptor alpha 1 antibody Interleukin 13 receptor alpha 1 chain antibody interleukin 13 receptor subunit alpha 1 antibody Interleukin-13 receptor subunit alpha-1 antibody NR 4 antibody NR4 antibody
Accession No.	Swiss-Prot#:P78552
Uniprot	P78552
GeneID	3597;
Calculated MW	50/40 kDa
Formulation	1*TBS (pH7.4), 1%BSA, 40%Glycerol. Preservative: 0.05% Sodium Azide.
Storage	Store at -20°C

Application Details

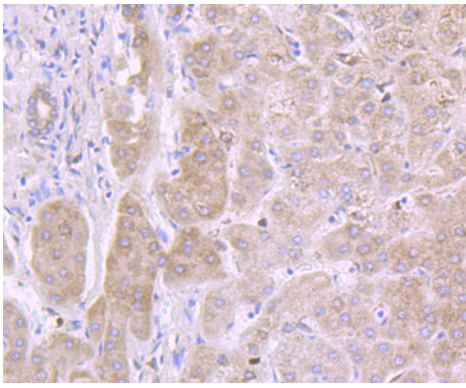
WB: 1:500-1:2,000IHC: 1:50-1:200

ICC: 1:100-1:500

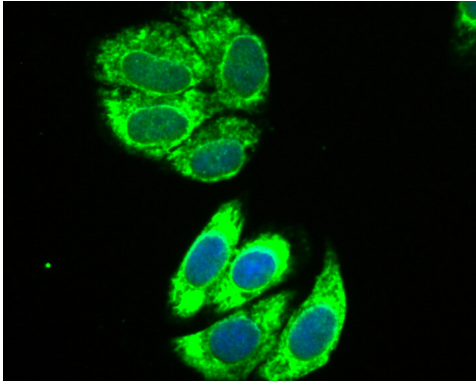
Images



Western blot analysis of IL13 Receptor alpha 1 on A549 cell lysates using anti-IL13 Receptor alpha 1 antibody at 1/500 dilution.



Immunohistochemical analysis of paraffin-embedded human liver tissue using anti-IL13 Receptor alpha 1 antibody. Counter stained with hematoxylin.



ICC staining IL13 Receptor alpha 1 in HepG2 cells (green). The nuclear counter stain is DAPI (blue). Cells were fixed in paraformaldehyde, permeabilised with 0.25% Triton X100/PBS.

Background

Interleukin 13 receptor, alpha 1, also known as IL13RA1 and CD213A1 (cluster of differentiation 213A1), is a human gene. Binds with low affinity to interleukin-13 (IL13). Together with IL4RA can form a functional receptor for IL13. Also serves as an alternate accessory protein to the common cytokine receptor gamma chain for interleukin-4 (IL4) signaling, but cannot replace the function of IL2RG in allowing enhanced interleukin-2 (IL2) binding activity. This protein has been shown to bind tyrosine kinase TYK2, and thus may mediate the signaling processes that lead to the activation of JAK1, STAT3 and STAT6 induced by IL13 and IL4.

References

Note: This product is for in vitro research use only