

## SCGB1A1 Rabbit mAb

Catalog No: #49757

Package Size: #49757-1 50ul #49757-2 100ul

Orders: order@signalwayantibody.com

Support: tech@signalwayantibody.com

## Description

Product Name	SCGB1A1 Rabbit mAb
Clone No.	JU34-03
Purification	ProA affinity purified
Applications	WB, ICC, FC
Species Reactivity	Hu, Ms, Rt
Immunogen Description	Recombinant protein
Other Names	Blastokinin antibody CC10 antibody CC16 antibody CCPBP antibody CCSP antibody Clara cell phospholipid binding protein antibody Clara cell phospholipid-binding protein antibody Clara cell specific 10 kD protein antibody Clara cells 10 kDa secretory protein antibody OTTHUMP00000236107 antibody SCGB1A1 antibody Secretoglobin family 1A member 1 antibody Secretoglobin, family 1A, member 1 (uteroglobin) antibody UG antibody UGB antibody UP-1 antibody UP1 antibody Urinary protein 1 antibody Urine protein 1 antibody UTER_HUMAN antibody Uteroglobin antibody
Accession No.	Swiss-Prot#:P11684
Uniprot	P11684
GeneID	7356;
Calculated MW	10 kDa
Concentration	1 mg/ml
Formulation	1*TBS (pH7.4), 1%BSA, 40%Glycerol. Preservative: 0.05% Sodium Azide.
Storage	Store at -20°C

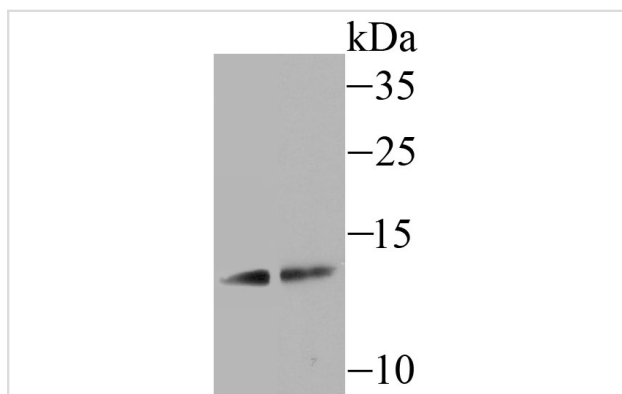
## Application Details

WB: 1:500-1:1,000

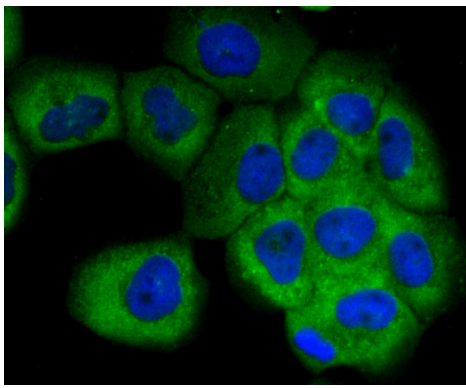
ICC: 1:50-1:200

FC: 1:50-1:100

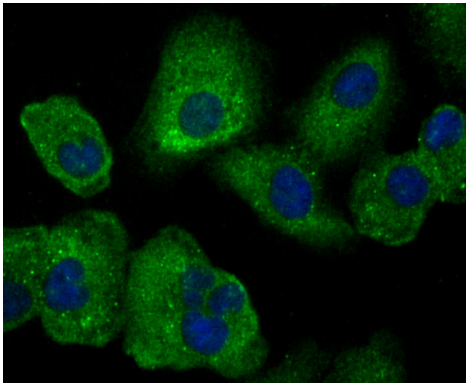
## Images



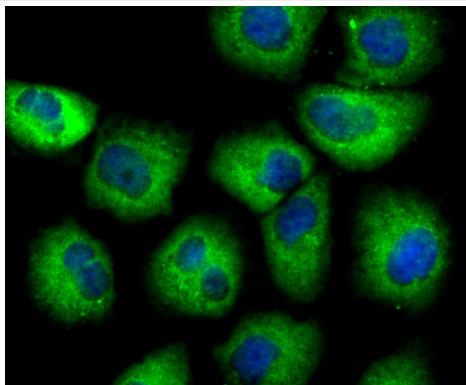
Western blot analysis of SCGB1A1 on mouse lung tissue (1) and A549 cell (2) lysate using anti-SCGB1A1 antibody at 1/500 dilution.



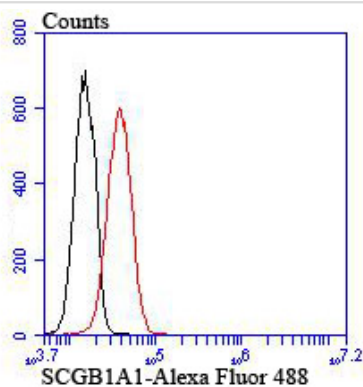
ICC staining SCGB1A1 in A431 cells (green). The nuclear counter stain is DAPI (blue). Cells were fixed in paraformaldehyde, permeabilised with 0.25% Triton X100/PBS.



ICC staining SCGB1A1 in A549 cells (green). The nuclear counter stain is DAPI (blue). Cells were fixed in paraformaldehyde, permeabilised with 0.25% Triton X100/PBS.



ICC staining SCGB1A1 in HUVEC cells (green). The nuclear counter stain is DAPI (blue). Cells were fixed in paraformaldehyde, permeabilised with 0.25% Triton X100/PBS.



Flow cytometric analysis of A549 cells with SCGB1A1 antibody at 1/100 dilution (red) compared with an unlabelled control (cells without incubation with primary antibody; black).

## Background

SCGB1A1 also named CC10. Clara cell 10 (CC10) protein, a homologue of rabbit uteroglobin, is a phospholipase A2 inhibitor. CC10 is regulated by AP-1, octamer, and hepatocyte nuclear factor-3 (HNF-3) family transcription factors. CC10 expression changes in relation to the ovarian menstrual cycle, and expression in human endometrium may be stimulated by progesterone, suggesting that CC10 may regulate eicosanoid levels in the human uterus. CC10 is expressed in nonciliated airway epithelial cells in the lung and in urogenital secretions. CC10 is involved in modulating inflammation in airway passages and may play a role in asthma. Overexpression of CC10 in the non-small cell lung cancer cell line A549 was shown to result in the near absence of MMP-2 and MMP-9 matrix metalloproteinases and a reduction in invasiveness, indicating that loss of CC10 may contribute to carcinogenesis.

---

Note: This product is for in vitro research use only