

## CRMP1 Rabbit mAb

Catalog No: #49771

Package Size: #49771-1 50ul #49771-2 100ul

Orders: [order@signalwayantibody.com](mailto:order@signalwayantibody.com)Support: [tech@signalwayantibody.com](mailto:tech@signalwayantibody.com)

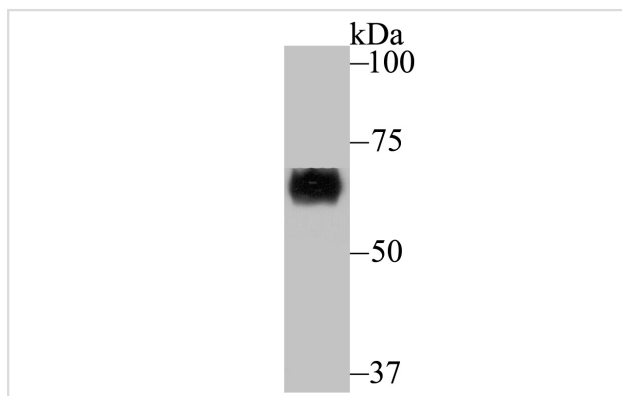
## Description

Product Name	CRMP1 Rabbit mAb
Host Species	Recombinant Rabbit
Clonality	Monoclonal antibody
Clone No.	JU73-30
Purification	ProA affinity purified
Applications	WB,ICC,IHC,FC,IP
Species Reactivity	Hu, Ms, Rt
Immunogen Description	Recombinant protein
Other Names	Collapsin response mediator protein 1 antibody CRMP 1 antibody CRMP-1 antibody Crmp1 antibody Dihydropyrimidinase like 1 antibody Dihydropyrimidinase related protein 1 antibody Dihydropyrimidinase-related protein 1 antibody DPYL1_HUMAN antibody DPYSL1 antibody DRP 1 antibody DRP-1 antibody DRP1 antibody ULIP-3 antibody Ulip3 antibody Unc-33-like phosphoprotein 3 antibody
Accession No.	Swiss-Prot#:Q14194
Uniprot	Q14194
GeneID	1400;
Calculated MW	74/62 kDa
Formulation	1*TBS (pH7.4), 1%BSA, 40%Glycerol. Preservative: 0.05% Sodium Azide.
Storage	Store at -20°C

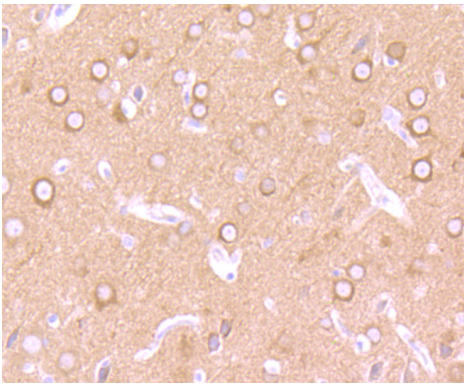
## Application Details

WB: 1:500-1:2,000 IHC: 1:50-1:200 ICC: 1:50-1:200FC: 1:50-1:100

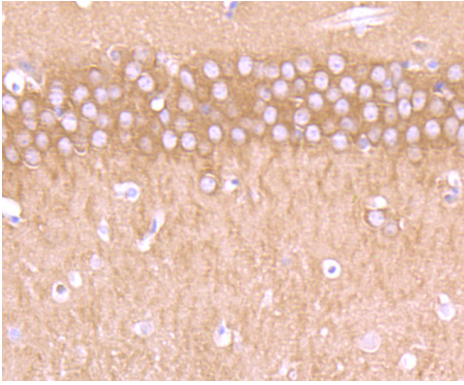
## Images



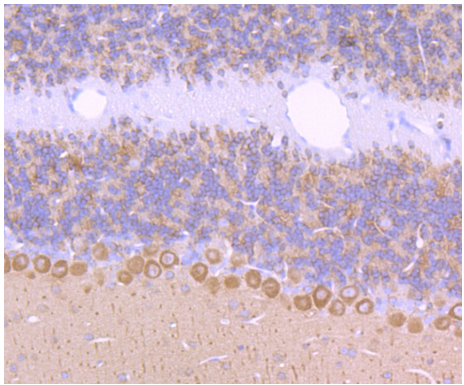
Western blot analysis of CRMP1 on mouse brain tissue lysate using anti-CRMP1 antibody at 1/500 dilution.



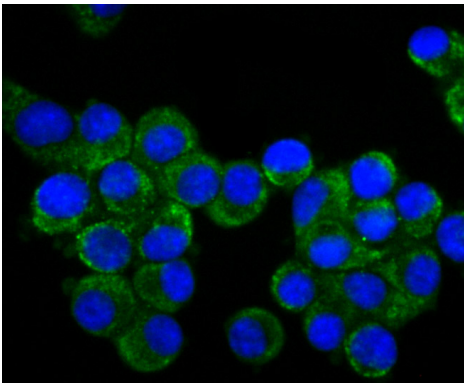
Immunohistochemical analysis of paraffin-embedded rat brain tissue using anti-CRMP1 antibody. Counter stained with hematoxylin.



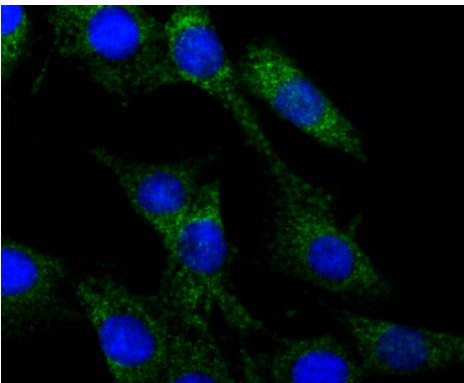
Immunohistochemical analysis of paraffin-embedded mouse brain tissue using anti-CRMP1 antibody. Counter stained with hematoxylin.



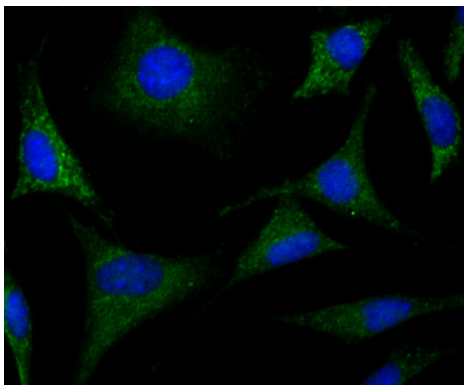
Immunohistochemical analysis of paraffin-embedded mouse cerebellum tissue using anti-CRMP1 antibody. Counter stained with hematoxylin.



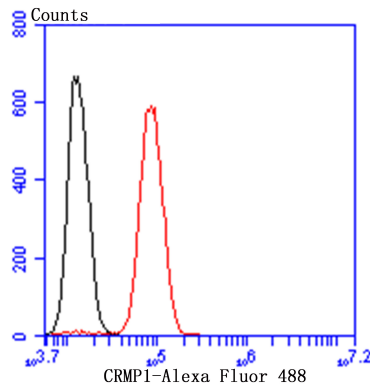
ICC staining CRMP1 in N2A cells (green). The nuclear counter stain is DAPI (blue). Cells were fixed in paraformaldehyde, permeabilised with 0.25% Triton X100/PBS.



ICC staining CRMP1 in SHG-44 cells (green). The nuclear counter stain is DAPI (blue). Cells were fixed in paraformaldehyde, permeabilised with 0.25% Triton X100/PBS.



ICC staining CRMP1 in SH-SY5Y cells (green). The nuclear counter stain is DAPI (blue). Cells were fixed in paraformaldehyde, permeabilised with 0.25% Triton X100/PBS.



Flow cytometric analysis of SH-SY-5Y cells with CRMP1 antibody at 1/50 dilution (red) compared with an unlabelled control (cells without incubation with primary antibody; black). Alexa Fluor 488-conjugated goat anti rabbit IgG was used as the secondary antibody.

## Background

Collapsin response mediator proteins (CRMPs), including CRMP-1 (DRP-1), CRMP-2 (DRP-2 or TOAD64), CRMP-3 (DRP-4), CRMP-4 (DRP-3) and CRMP-5 (DRP-5), mediate signal transduction after exposure of neural cells to the axon guidance molecule Semaphorin 3A (SEMA3A)/collapsin. CRMPs are present in the developing cerebral cortex and neocortical neurons and are responsive to SEMA3A. In the adult brain, the expression of CRMPs is dramatically downregulated. However, they remain expressed in structures that retain their capacity for differentiation and plasticity. CRMP-1 is also involved in cancer invasion and metastasis.

## References

Note: This product is for in vitro research use only