

cPLA2 Polyclonal Antibody

Catalog No: #41585

Package Size: #41585-1 50ul #41585-2 100ul

Orders: order@signalwayantibody.com

Support: tech@signalwayantibody.com

Description

Product Name	cPLA2 Polyclonal Antibody
Host Species	Rabbit
Clonality	Polyclonal
Purification	The antibody was affinity-purified from rabbit antiserum by affinity-chromatography using epitope-specific immunogen.
Applications	WB,IHC-p,IF,ELISA
Species Reactivity	Hu Ms Rt
Specificity	cPLA2 Polyclonal Antibody detects endogenous levels of cPLA2 protein.
Immunogen Description	Synthesized peptide derived from the N-terminal region of human cPLA2.
Target Name	cPLA2
Other Names	PLA2G4A; CPLA2; PLA2G4; Cytosolic phospholipase A2; cPLA2; Phospholipase A2 group IVA
Accession No.	Swiss-Prot: P47712NCBI Gene ID: 5321
Uniprot	P47712
GeneID	5321;
SDS-PAGE MW	114kd
Concentration	1mg/ml
Formulation	Liquid in PBS containing 50% glycerol, 0.5% BSA and 0.02% sodium azide.
Storage	Store at -20°C/1 year

Application Details

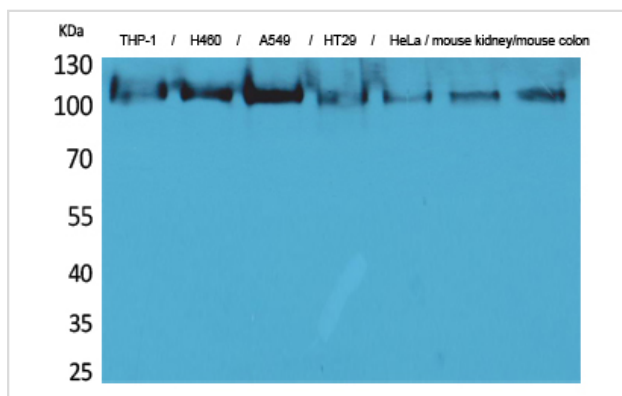
Western Blot: 1/500 - 1/2000.

ELISA: 1/20000.

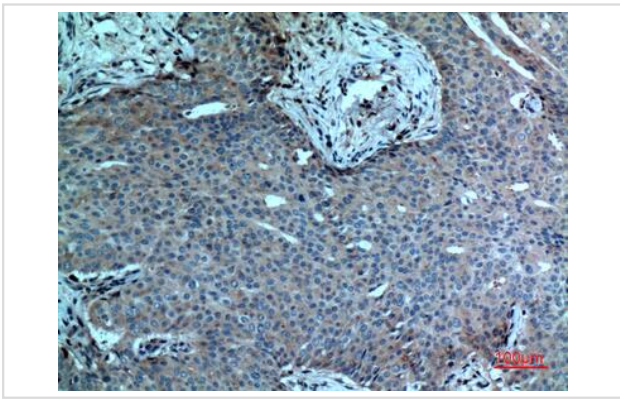
Not yet tested in other applications.

IHC-p: 1:100-300

Images



Western Blot analysis of THP-1 H460 A549 HT29 HeLa mouse kidney mouse colon cells using cPLA2 Polyclonal Antibody



Immunohistochemical analysis of paraffin-embedded human-breast-cancer, antibody was diluted at 1:100

Note: This product is for in vitro research use only