

Fructose 6 Phosphate Kinase Rabbit mAb

Catalog No: #49781

Package Size: #49781-1 50ul #49781-2 100ul

Orders: order@signalwayantibody.com

Support: tech@signalwayantibody.com

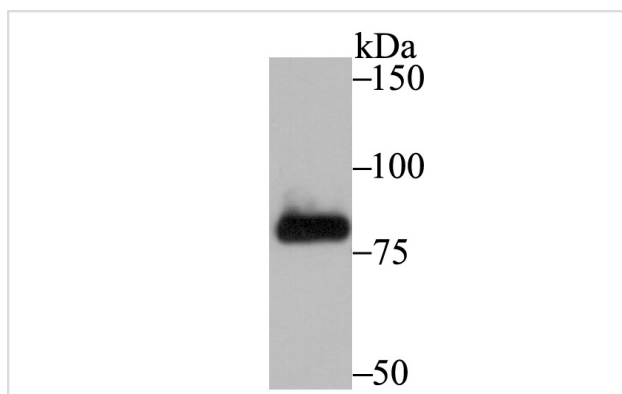
Description

Product Name	Fructose 6 Phosphate Kinase Rabbit mAb
Host Species	Recombinant Rabbit
Clonality	Monoclonal antibody
Clone No.	JU53-31
Purification	ProA affinity purified
Applications	WB,ICC,IF,IHC,FC
Species Reactivity	Hu, Ms, Rt
Immunogen Description	Recombinant protein
Other Names	6 Phosphofructokinase Muscle Type antibody 6-phosphofructokinase antibody 6-phosphofructokinase muscle type antibody EC 2.7.1.1 antibody EC 2.7.1.11 antibody GSD7 antibody K6PF_HUMAN antibody MGC8699 antibody muscle type antibody PFK, muscle type antibody PFK-A antibody PFKA antibody PFKL antibody PFKM antibody PFKP antibody PFKX antibody Phosphofructo 1 Kinase Isozyme A antibody Phosphofructo-1-kinase isozyme A antibody Phosphofructokinase 1 antibody Phosphofructokinase M antibody Phosphofructokinase, muscle antibody Phosphofructokinase, muscle type antibody Phosphofructokinase, polypeptide X antibody Phosphofructokinase-M antibody Phosphohexokinase antibody
Accession No.	Swiss-Prot#:P08237
Uniprot	P08237
GeneID	5213;
Calculated MW	85 kDa
Formulation	1*TBS (pH7.4), 1%BSA, 40%Glycerol. Preservative: 0.05% Sodium Azide.
Storage	Store at -20°C

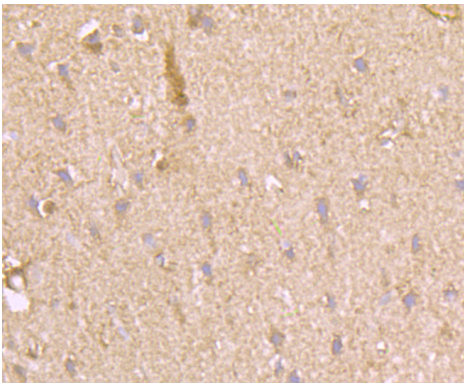
Application Details

WB: 1:500-1:1,000 IHC: 1:50-1:200 ICC: 1:50-1:200FC: 1:50-1:100

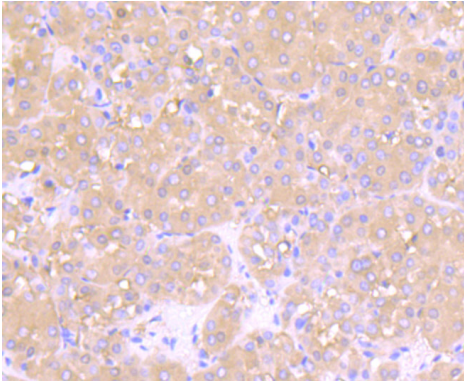
Images



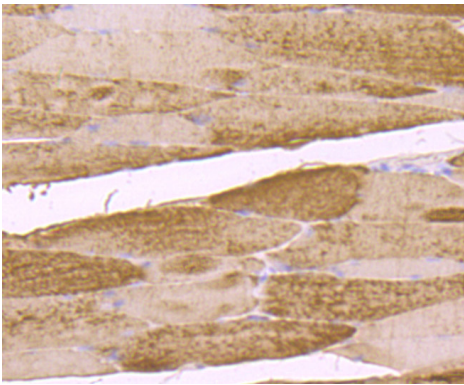
Western blot analysis of Fructose 6 Phosphate Kinase on PC-3M cell lysate using anti-Fructose 6 Phosphate Kinase antibody at 1/500 dilution.



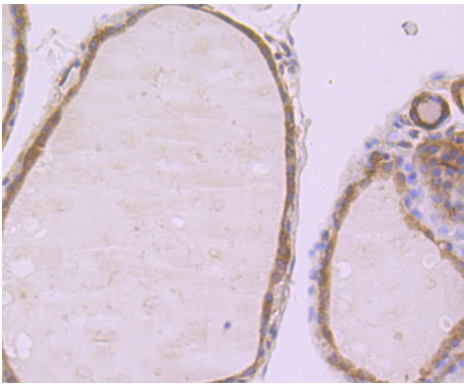
Immunohistochemical analysis of paraffin-embedded rat brain tissue using anti-Fructose 6 Phosphate Kinase antibody. Counter stained with hematoxylin.



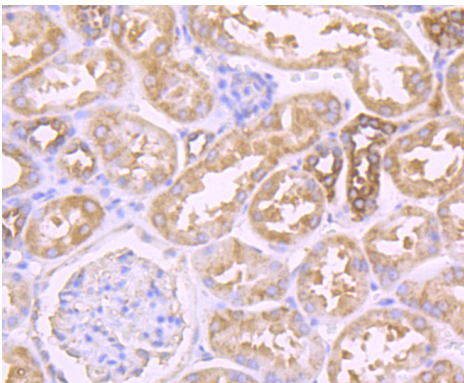
Immunohistochemical analysis of paraffin-embedded human liver cancer tissue using anti-Fructose 6 Phosphate Kinase antibody. Counter stained with hematoxylin.



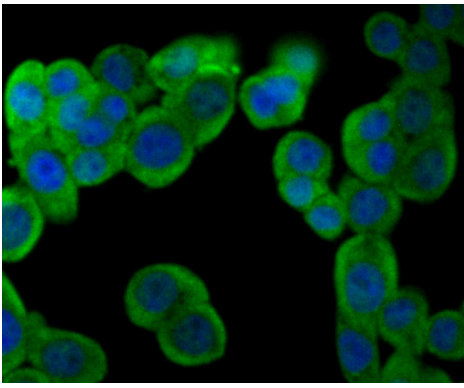
Immunohistochemical analysis of paraffin-embedded mouse skeletal muscle tissue using anti-Fructose 6 Phosphate Kinase antibody. Counter stained with hematoxylin.



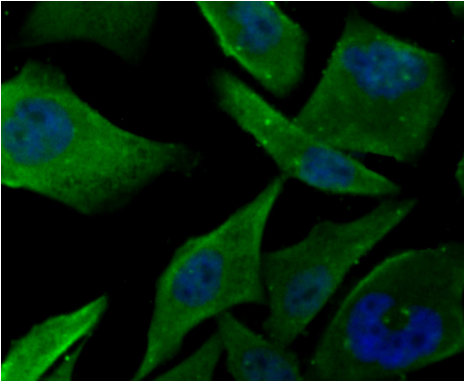
Immunohistochemical analysis of paraffin-embedded human thyroid gland tissue using anti-Fructose 6 Phosphate Kinase antibody. Counter stained with hematoxylin.



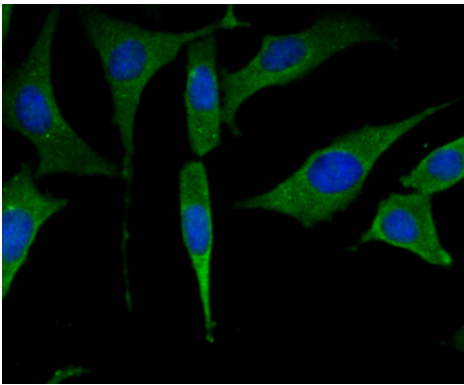
Immunohistochemical analysis of paraffin-embedded human kidney tissue using anti-Fructose 6 Phosphate Kinase antibody. Counter stained with hematoxylin.



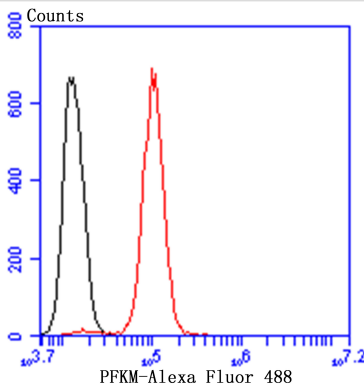
ICC staining Fructose 6 Phosphate Kinase in LOVO cells (green). The nuclear counter stain is DAPI (blue). Cells were fixed in paraformaldehyde, permeabilised with 0.25% Triton X100/PBS.



ICC staining Fructose 6 Phosphate Kinase in PC-3M cells (green). The nuclear counter stain is DAPI (blue). Cells were fixed in paraformaldehyde, permeabilised with 0.25% Triton X100/PBS.



ICC staining Fructose 6 Phosphate Kinase in SH-SY-5Y cells (green). The nuclear counter stain is DAPI (blue). Cells were fixed in paraformaldehyde, permeabilised with 0.25% Triton X100/PBS.



Flow cytometric analysis of SH-SY-5Y cells with Fructose 6 Phosphate Kinase antibody at 1/100 dilution (red) compared with an unlabelled control (cells without incubation with primary antibody; black). Alexa Fluor 488-conjugated goat anti-rabbit IgG was used as the secondary antibody.

Background

Catalyzes the phosphorylation of D-fructose 6-phosphate to fructose 1,6-bisphosphate by ATP, the first committing step of glycolysis. In human PFK exists as a system of 3 types of subunits, PFKM (muscle), PFKL (liver) and PFKP (platelet) isoenzymes.

References

Note: This product is for in vitro research use only