

MK Polyclonal Antibody

Catalog No: #41586

Package Size: #41586-1 50ul #41586-2 100ul

Orders: order@signalwayantibody.com

Support: tech@signalwayantibody.com

Description

| | |
|-----------------------|---|
| Product Name | MK Polyclonal Antibody |
| Host Species | Rabbit |
| Clonality | Polyclonal |
| Purification | The antibody was affinity-purified from rabbit antiserum by affinity-chromatography using epitope-specific immunogen. |
| Applications | WB ELISA |
| Species Reactivity | Hu Rt |
| Specificity | MK Polyclonal Antibody detects endogenous levels of MK protein. |
| Immunogen Type | peptide |
| Immunogen Description | Synthesized peptide derived from the Internal region of human MK. |
| Target Name | MK |
| Other Names | MDK; MK1; NEGF2; Midkine; MK; Amphiregulin-associated protein; ARAP; Midgestation and kidney protein; Neurite outgrowth-promoting factor 2; Neurite outgrowth-promoting protein |
| Accession No. | Swiss-Prot: P21741NCBI Gene ID: 4192 |
| Uniprot | P21741 |
| GeneID | 4192; |
| SDS-PAGE MW | 18kd |
| Concentration | 1mg/ml |
| Formulation | Liquid in PBS containing 50% glycerol, 0.5% BSA and 0.02% sodium azide. |
| Storage | Store at -20°C/1 year |

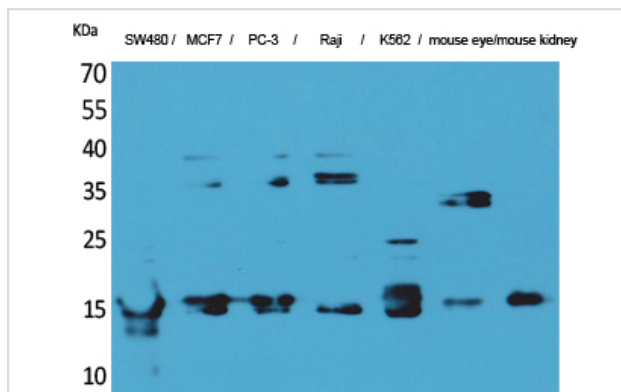
Application Details

Western Blot: 1/500 - 1/2000.

ELISA: 1/20000.

Not yet tested in other applications.

Images



Western Blot analysis of SW480 MCF7 PC-3 Raji K562 mouse eye mouse kidney cells using MK Polyclonal Antibody

Note: This product is for in vitro research use only