

PSME1 Rabbit mAb

Catalog No: #49782



Package Size: #49782-1 50ul #49782-2 100ul

Orders: order@signalwayantibody.comSupport: tech@signalwayantibody.com

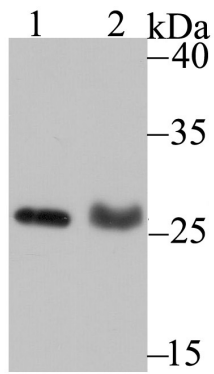
Description

Product Name	PSME1 Rabbit mAb
Host Species	Recombinant Rabbit
Clonality	Monoclonal antibody
Clone No.	JU60-33
Purification	ProA affinity purified
Applications	WB, ICC, IF, IHC, IP
Species Reactivity	Hu, Ms, Rt
Immunogen Description	Recombinant protein
Other Names	11S regulator complex alpha subunit antibody 11S regulator complex subunit alpha antibody 29 kD MCP activator subunit antibody 29kD MCP activator subunit antibody Activator of multicatalytic protease subunit 1 antibody IFI5111 antibody IGUP I-5111 antibody Interferon gamma IEF SSP 5111 antibody Interferon gamma inducible protein 5111 antibody Interferon gamma up regulated I 5111 protein antibody Interferon gamma up-regulated I-5111 protein antibody MGC8628 antibody PA28a antibody PA28alpha antibody Proteasome (prosome, macropain) activator subunit 1 (PA28 alpha) antibody Proteasome activator 28 subunit alpha antibody Proteasome activator complex subunit 1 antibody Proteasome activator subunit 1 antibody PSME1 antibody PSME1_HUMAN antibody REG-alpha antibody REGalpha antibody
Accession No.	Swiss-Prot#:Q06323
Uniprot	Q06323
GeneID	5720;
Calculated MW	27 kDa
Formulation	1*TBS (pH7.4), 1%BSA, 40%Glycerol. Preservative: 0.05% Sodium Azide.
Storage	Store at -20°C

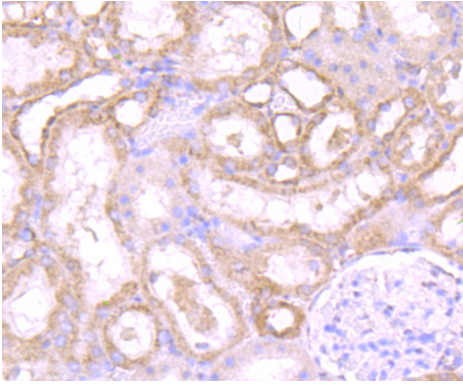
Application Details

WB: 1:500-1:1,000 IHC: 1:50-1:200 ICC: 1:50-1:100IP: 1:10-1:50

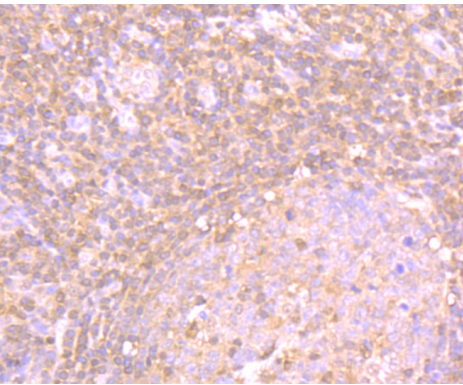
Images



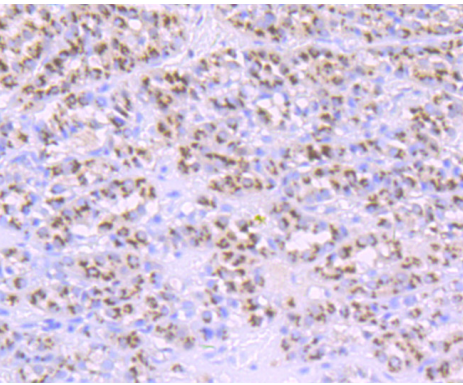
Western blot analysis of PSME1 on MCF-7 cell (1) and rat lung tissue (2) lysate using anti-PSME1 antibody at 1/500 dilution.



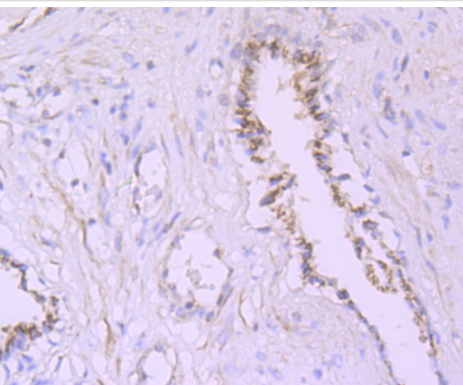
Immunohistochemical analysis of paraffin-embedded rat kidney tissue using anti-PSME1 antibody. Counter stained with hematoxylin.



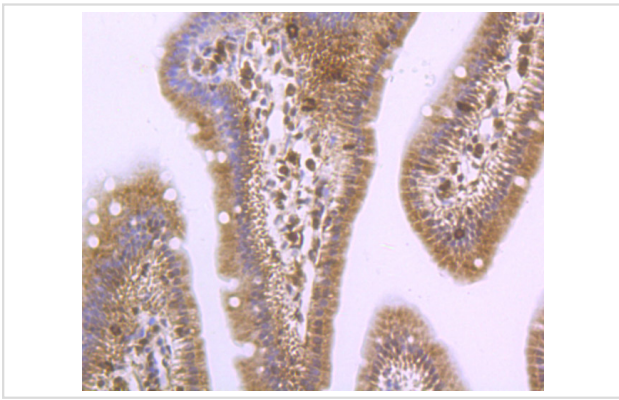
Immunohistochemical analysis of paraffin-embedded human tonsil tissue using anti-PSME1 antibody. Counter stained with hematoxylin.



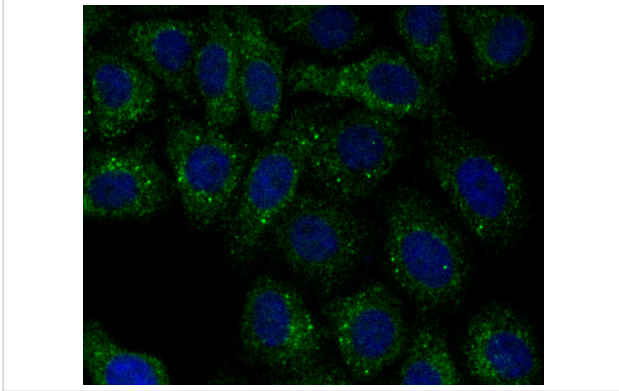
Immunohistochemical analysis of paraffin-embedded human liver cancer tissue using anti-PSME1 antibody. Counter stained with hematoxylin.



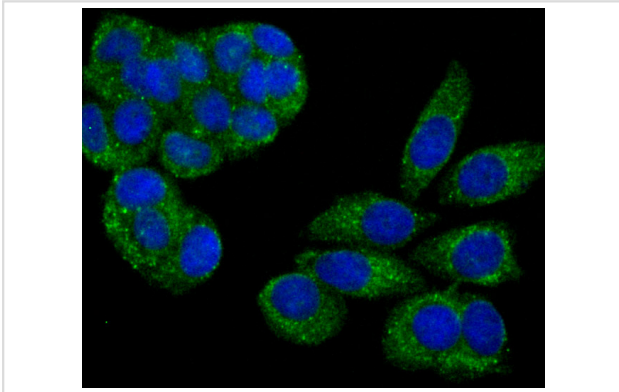
Immunohistochemical analysis of paraffin-embedded human prostate tissue using anti-PSME1 antibody. Counter stained with hematoxylin.



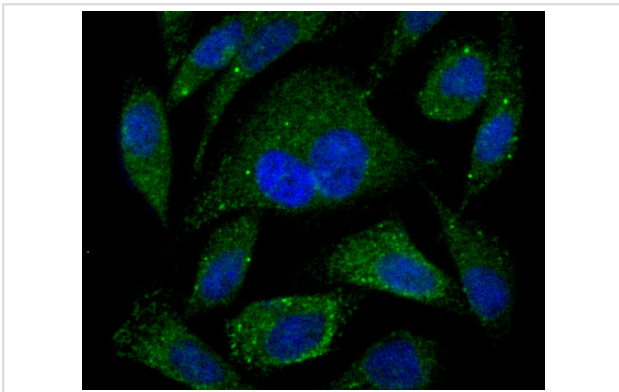
Immunohistochemical analysis of paraffin-embedded mouse small intestine tissue using anti-PSME1 antibody. Counter stained with hematoxylin.



ICC staining PSME1 in HepG2 cells (green). The nuclear counter stain is DAPI (blue). Cells were fixed in paraformaldehyde, permeabilised with 0.25% Triton X100/PBS.



ICC staining PSME1 in MCF-7 cells (green). The nuclear counter stain is DAPI (blue). Cells were fixed in paraformaldehyde, permeabilised with 0.25% Triton X100/PBS.



ICC staining PSME1 in PC-3M cells (green). The nuclear counter stain is DAPI (blue). Cells were fixed in paraformaldehyde, permeabilised with 0.25% Triton X100/PBS.

Background

Implicated in immunoproteasome assembly and required for efficient antigen processing. The PA28 activator complex enhances the generation of class I binding peptides by altering the cleavage pattern of the proteasome.

References

Note: This product is for in vitro research use only