

SFPQ Rabbit mAb

Catalog No: #49785

Package Size: #49785-1 50ul #49785-2 100ul

Orders: order@signalwayantibody.comSupport: tech@signalwayantibody.com

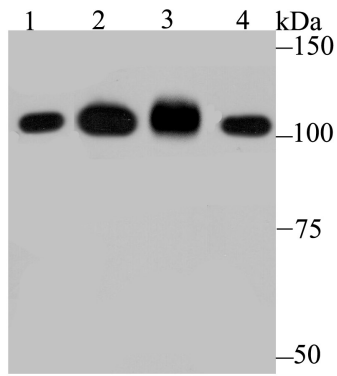
Description

Product Name	SFPQ Rabbit mAb
Host Species	Recombinant Rabbit
Clonality	Monoclonal antibody
Clone No.	JU33-99
Purification	ProA affinity purified
Applications	WB,IHC,ICC,IF
Species Reactivity	Hu, Ms, Rt
Immunogen Description	Recombinant protein
Other Names	100 kDa DNA pairing protein antibody 100 kDa DNA-pairing protein antibody 100 kDa subunit antibody DNA binding p52/p100 complex 100 kDa subunit antibody DNA-binding p52/p100 complex antibody hPOMP100 antibody Polypyrimidine tract binding protein associated splicing factor antibody Polypyrimidine tract-binding protein-associated-splicing factor antibody POMP100 antibody PPP1R140 antibody proline- and glutamine-rich antibody Protein phosphatase 1 regulatory subunit 140 antibody PSF antibody PTB associated splicing factor antibody PTB-associated-splicing factor antibody Sfpq antibody SFPQ_HUMAN antibody Splicing factor antibody Splicing factor proline and glutamine rich antibody Splicing factor proline/glutamine rich (polypyrimidine tract binding protein associated) antibody Splicing factor proline/glutamine rich antibody
Accession No.	Swiss-Prot#:P23246
Uniprot	P23246
GeneID	6421;
Calculated MW	100 kDa
Formulation	1*TBS (pH7.4), 1%BSA, 40%Glycerol. Preservative: 0.05% Sodium Azide.
Storage	Store at -20°C

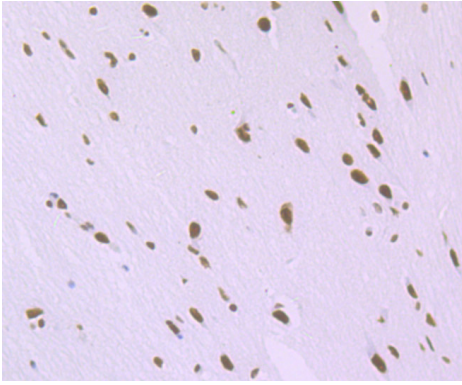
Application Details

WB: 1:500-1:2,000 IHC: 1:50-1:200 ICC: 1:10-1:50

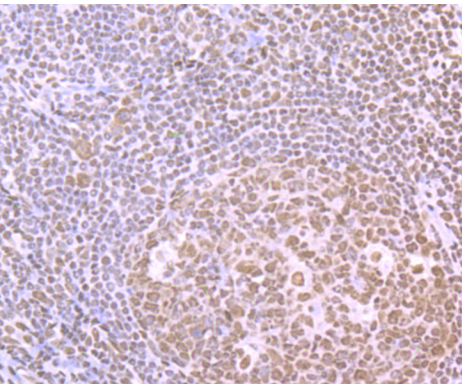
Images



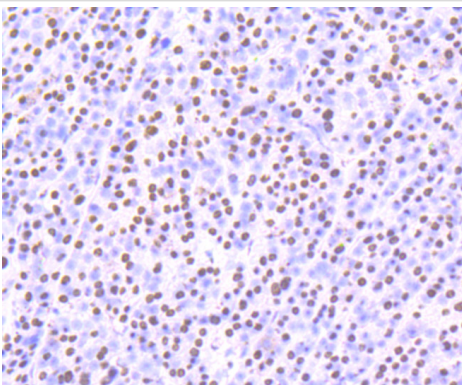
Western blot analysis of SFPQ on different lysates using anti-SFPQ antibody at 1/1,000 dilution. Positive control: Lane 1: K562 Lane 2: Daudi Lane 3: Mouse testis Lane 4: Mouse lung



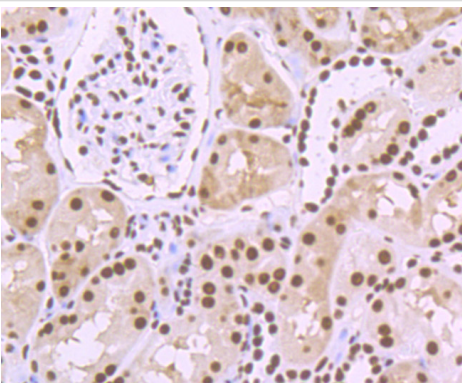
Immunohistochemical analysis of paraffin-embedded rat brain tissue using anti-SFPQ antibody. Counter stained with hematoxylin.



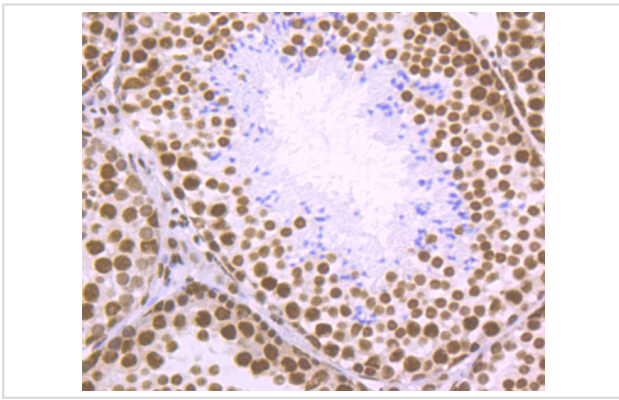
Immunohistochemical analysis of paraffin-embedded human tonsil tissue using anti-SFPQ antibody. Counter stained with hematoxylin.



Immunohistochemical analysis of paraffin-embedded human liver cancer tissue using anti-SFPQ antibody. Counter stained with hematoxylin.



Immunohistochemical analysis of paraffin-embedded human kidney tissue using anti-SFPQ antibody. Counter stained with hematoxylin.



Immunohistochemical analysis of paraffin-embedded mouse testis tissue using anti-SFPQ antibody. Counter stained with hematoxylin.

Background

DNA- and RNA binding protein, involved in several nuclear processes. Essential pre-mRNA splicing factor required early in spliceosome formation and for splicing catalytic step II, probably as a heteromer with NONO. Binds to pre-mRNA in spliceosome C complex, and specifically binds to intronic polypyrimidine tracts. Involved in regulation of signal-induced alternative splicing. Interacts with U5 snRNA, probably by binding to a purine-rich sequence located on the 3' side of U5 snRNA stem 1b. May be involved in a pre-mRNA coupled splicing and polyadenylation process as component of a snRNP-free complex with SNRPA/U1A. The SFPQ-NONO heteromer associated with MATR3 may play a role in nuclear retention of defective RNAs. SFPQ may be involved in homologous DNA pairing; in vitro, promotes the invasion of ssDNA between a duplex DNA and produces a D-loop formation.

References

Note: This product is for in vitro research use only