

SMARCC1 Rabbit mAb

Catalog No: #49795

Package Size: #49795-1 50ul #49795-2 100ul

Orders: order@signalwayantibody.com

Support: tech@signalwayantibody.com

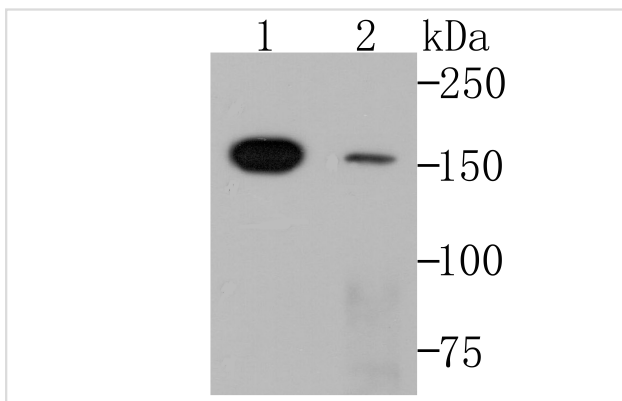
Description

Product Name	SMARCC1 Rabbit mAb
Host Species	Recombinant Rabbit
Clonality	Monoclonal antibody
Clone No.	JB43-43
Purification	ProA affinity purified
Applications	WB,ICC,IF,FC,IP
Species Reactivity	Hu, Rt
Immunogen Description	Recombinant protein
Other Names	AI115498 antibody BAF 155 antibody BAF155 antibody BRG 1 associated factor 155 antibody BRG1 associated factor 155 antibody BRG1-associated factor 155 antibody Chromatin remodeling complex BAF155 subunit antibody CRACC 1 antibody CRACC1 antibody Mammalian chromatin remodeling complex BRG 1 associated factor 155 antibody Mammalian chromatin remodeling complex BRG1 associated factor 155 antibody Rsc 8 antibody Rsc8 antibody SMARC C1 antibody SMARCC 1 antibody SMARCC1 antibody SMRC1_HUMAN antibody SRG 3 antibody SRG3 antibody SWI 3 antibody SWI/SNF complex 155 kDa subunit antibody SWI/SNF complex subunit SMARCC1 antibody SWI/SNF related matrix associated actin dependent regulator of chromatin c1 antibody SWI/SNF related matrix associated actin dependent regulator of chromatin subfamily c member 1 antibody SWI/SNF-related matrix-associated actin-dependent regulator of chromatin subfamily C member 1 antibody SWI3 antibody
Accession No.	Swiss-Prot#:Q92922
Uniprot	Q92922
GeneID	6599;
Calculated MW	123 kDa (Predicted band size) 150 kDa (Observed band size)
Formulation	1*TBS (pH7.4), 1%BSA, 40%Glycerol. Preservative: 0.05% Sodium Azide.
Storage	Store at -20°C

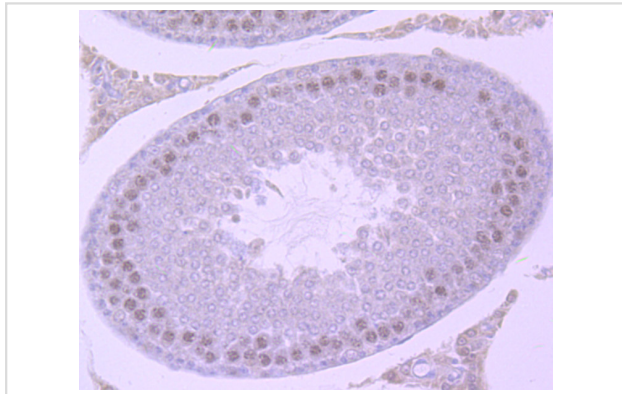
Application Details

WB: 1:500-1:1,000 ICC: 1:50-1:200IP: 1:10-1:50FC: 1:50-1:100

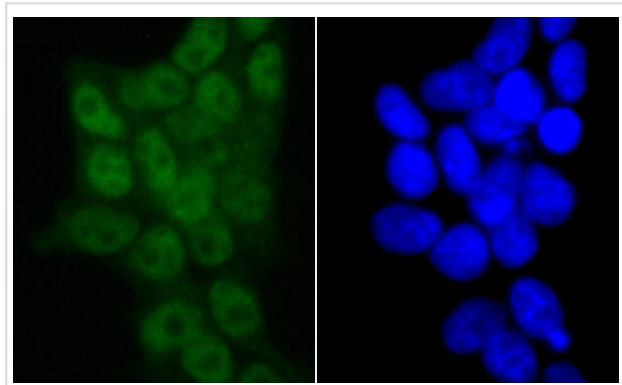
Images



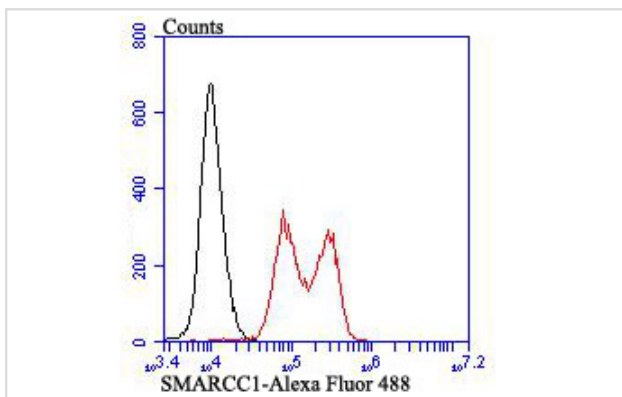
Western blot analysis of SMARCC1 on different cell lysates using anti-SMARCC1 at 1/500 dilution. Positive controls: Line 1: Mouse thymus tissue Line 2: HL-60



Immunohistochemical analysis of paraffin-embedded mouse testis tissue using anti-SMARCC1 antibody. Counter stained with hematoxylin.



ICC staining SMARCC1 in 293T cells (green). The nuclear counter stain is DAPI (blue). Cells were fixed in paraformaldehyde, permeabilised with 0.25% Triton X100/PBS.



Flow cytometric analysis of K562 cells with SMARCC1 antibody at 1/50 dilution (red) compared with an unlabelled control (cells without incubation with primary antibody; black). Alexa Fluor 488-conjugated goat anti-rabbit IgG was used as the secondary antibody.

Background

Involved in transcriptional activation and repression of select genes by chromatin remodeling (alteration of DNA-nucleosome topology). Component of SWI/SNF chromatin remodeling complexes that carry out key enzymatic activities, changing chromatin structure by altering DNA-histone contacts within a nucleosome in an ATP-dependent manner. May stimulate the ATPase activity of the catalytic subunit of the complex. Belongs to the neural progenitors-specific chromatin remodeling complex (npBAF complex) and the neuron-specific chromatin remodeling complex (nBAF complex). During neural development a switch from a stem/progenitor to a postmitotic chromatin remodeling mechanism occurs as neurons exit the cell cycle and become committed to their adult state. The transition from proliferating neural stem/progenitor cells to postmitotic neurons requires a switch in subunit composition of the npBAF and nBAF complexes.

References

Note: This product is for in vitro research use only