

# GRASP65 Rabbit mAb

Catalog No: #49796



Package Size: #49796-1 50ul #49796-2 100ul

Orders: [order@signalwayantibody.com](mailto:order@signalwayantibody.com)

Support: [tech@signalwayantibody.com](mailto:tech@signalwayantibody.com)

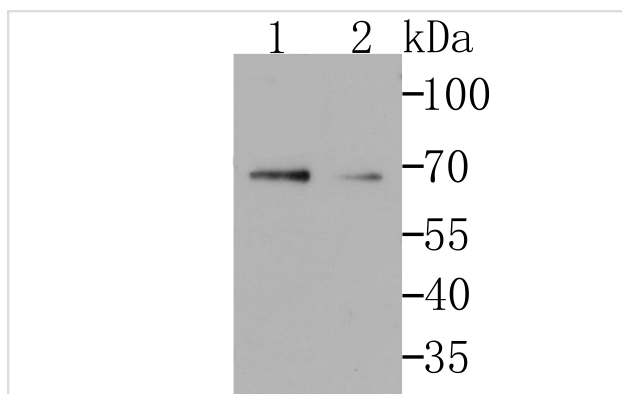
## Description

Product Name	GRASP65 Rabbit mAb
Host Species	Recombinant Rabbit
Clonality	Monoclonal antibody
Clone No.	JB36-34
Purification	ProA affinity purified
Applications	WB,ICC,IF,IHC,FC,IP
Species Reactivity	Hu
Immunogen Description	Recombinant protein
Other Names	FLJ23443 antibody Golgi peripheral membrane protein p65 antibody Golgi phosphoprotein 5 antibody Golgi reassembly and stacking protein 1 antibody Golgi reassembly and stacking protein 65 kDa antibody Golgi reassembly and stacking protein, 65-kD antibody Golgi reassembly stacking protein 1 65kDa antibody Golgi reassembly stacking protein 1 antibody Golgi reassembly stacking protein of 65 kDa antibody Golgi reassembly-stacking protein 1 antibody Golgi reassembly-stacking protein of 65 kDa antibody GOLPH 5 antibody GOLPH5 antibody Gorasp 1 antibody GORASP1 antibody GORS1_HUMAN antibody GRASP 65 antibody GRASP65 antibody MGC118894 antibody MGC118897 antibody P65 antibody
Accession No.	Swiss-Prot#:Q9BQQ3
Uniprot	Q9BQQ3
GeneID	64689;
Calculated MW	46 kDa (Predicted band size)
Formulation	1*TBS (pH7.4), 1%BSA, 40%Glycerol. Preservative: 0.05% Sodium Azide.
Storage	Store at -20°C

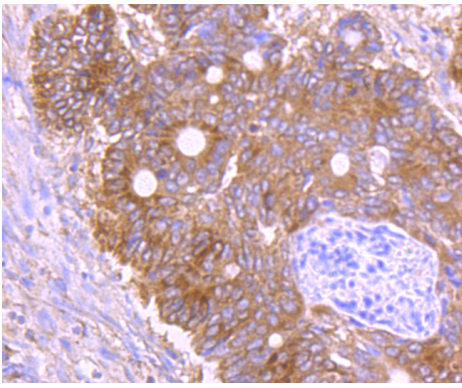
## Application Details

WB: 1:500-1:1,000 IHC: 1:50-1:200 ICC: 1:50-1:200FC: 1:50-1:100

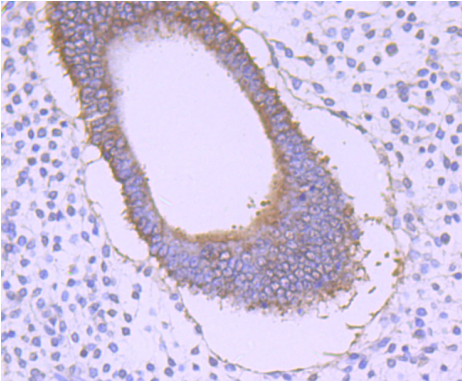
## Images



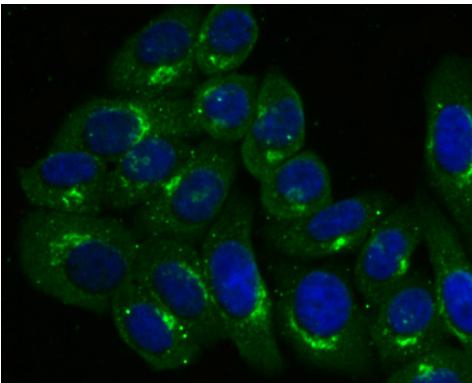
Western blot analysis of GRASP65 on different cell lysates using anti-GRASP65 at 1/500 dilution. Positive control 1/2 Line 1: THP-1 Line 2: SKBR3



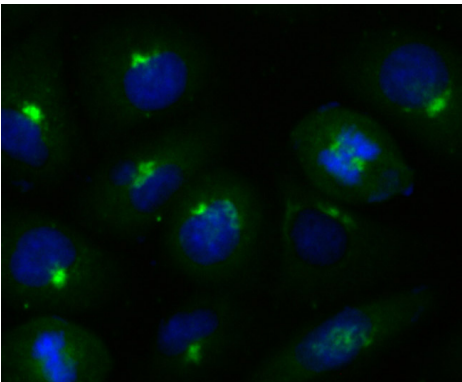
Immunohistochemical analysis of paraffin-embedded human colon cancer tissue using anti-GRASP65 antibody. Counter stained with hematoxylin.



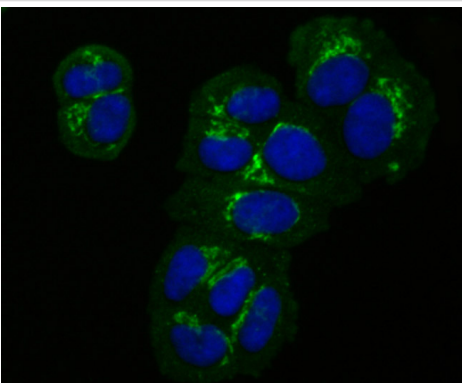
Immunohistochemical analysis of paraffin-embedded human uterine tissue using anti-GRASP65 antibody. Counter stained with hematoxylin.



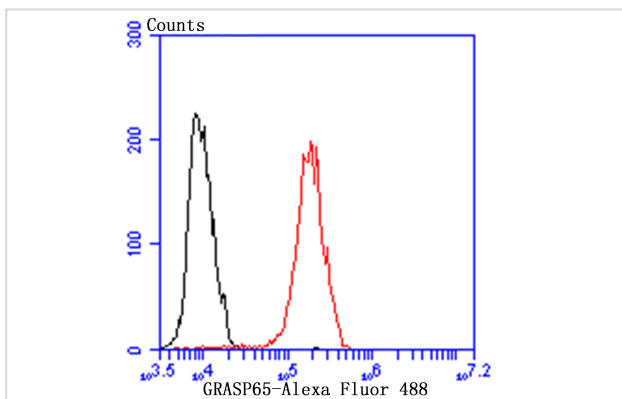
ICC staining GRASP65 in HepG2 cells (green). The nuclear counter stain is DAPI (blue). Cells were fixed in paraformaldehyde, permeabilised with 0.25% Triton X100/PBS.



ICC staining GRASP65 in HUVEC cells (green). The nuclear counter stain is DAPI (blue). Cells were fixed in paraformaldehyde, permeabilised with 0.25% Triton X100/PBS.



ICC staining GRASP65 in MCF-7 cells (green). The nuclear counter stain is DAPI (blue). Cells were fixed in paraformaldehyde, permeabilised with 0.25% Triton X100/PBS.



Flow cytometric analysis of MCF-7 cells with GRASP65 antibody at 1/50 dilution (red) compared with an unlabelled control (cells without incubation with primary antibody; black). Alexa Fluor 488-conjugated goat anti-rabbit IgG was used as the secondary antibody.

## Background

Stacking factor involved in the postmitotic assembly of Golgi stacks from mitotic Golgi fragments. Key structural protein required for the maintenance of the Golgi apparatus integrity: its caspase-mediated cleavage is required for fragmentation of the Golgi during apoptosis (By similarity). Also mediates, via its interaction with GOLGA2/GM130, the docking of transport vesicles with the Golgi membranes.

## References

Note: This product is for in vitro research use only