

Nesprin 1 Rabbit mAb

Catalog No: #49810



Package Size: #49810-1 50ul #49810-2 100ul

Orders: [order@signalwayantibody.com](mailto:order@signalwayantibody.com)  
Support: [tech@signalwayantibody.com](mailto:tech@signalwayantibody.com)

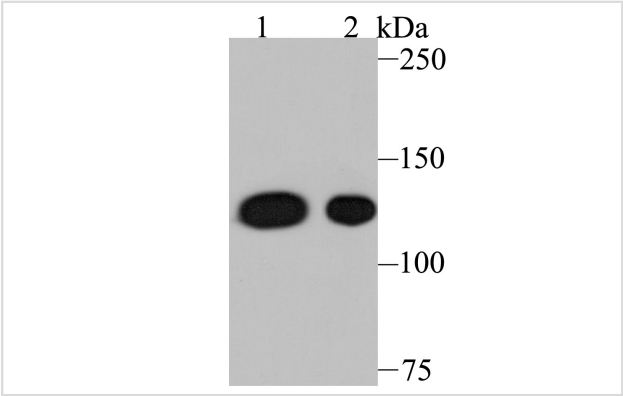
Description

Product Name	Nesprin 1 Rabbit mAb
Clone No.	JB35-26
Purification	ProA affinity purified
Applications	WB,ICC,IF,IHC,FC
Species Reactivity	Hu, Ms, Rt
Immunogen Description	Synthetic peptide within Human Nesprin1 aa 8241-8290/8797.
Other Names	8B antibody ARCA1 antibody C6orf98 antibody CPG2 antibody CPG2 full length antibody dJ45H2.2 antibody EDMD4 antibody Enaptin antibody Myne-1 antibody MYNE1 antibody Myocyte nuclear envelope protein 1 antibody Nesp1 antibody Nesprin-1 antibody Nuclear envelope spectrin repeat protein 1 antibody SCAR8 antibody Spectrin repeat containing nuclear envelope 1 antibody Synaptic nuclear envelope protein 1 antibody Synaptic nuclei expressed gene 1 antibody Syne-1 antibody SYNE1 antibody SYNE1_HUMAN antibody SYNE1B antibody
Accession No.	Swiss-Prot#:Q8NF91
Uniprot	Q8NF91
GeneID	23345;
Calculated MW	1011 kDa
Formulation	1*TBS (pH7.4), 0.05% BSA, 40% Glycerol. Preservative: 0.05% Sodium Azide.
Storage	Store at -20°C

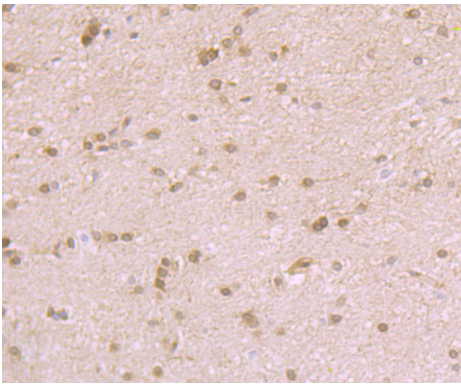
Application Details

WB: 1:500-1:2,000  
IHC: 1:50-1:200  
ICC: 1:200-1:1,000  
FC: 1:50-1:100

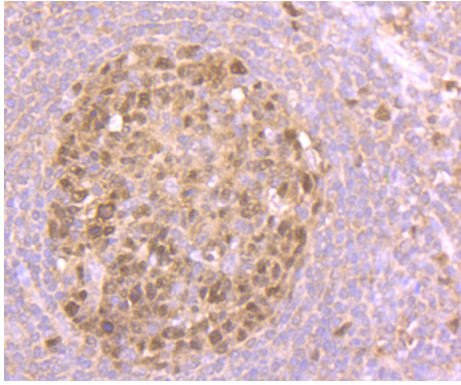
Images



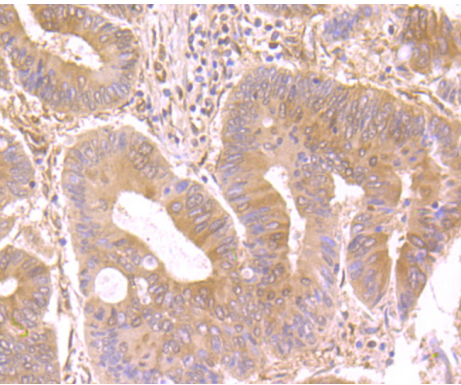
Western blot analysis of Nesprin 1 on different lysates using anti-Nesprin 1 antibody at 1/500 dilution. Positive control:  
Lane 1: A549    Lane 2: Mouse spleen tissue



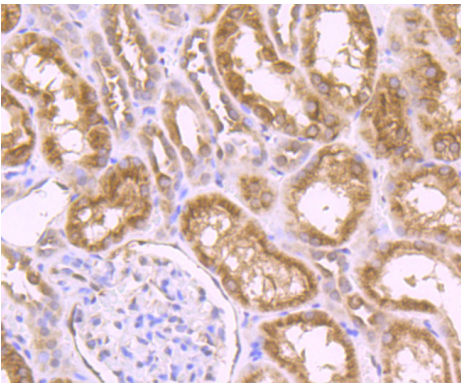
Immunohistochemical analysis of paraffin-embedded rat brain tissue using anti-Nesprin 1 antibody. Counter stained with hematoxylin.



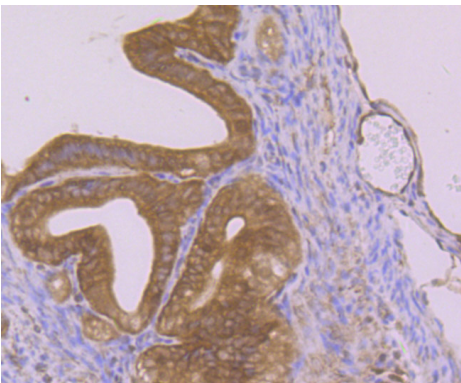
Immunohistochemical analysis of paraffin-embedded human tonsil tissue using anti-Nesprin 1 antibody. Counter stained with hematoxylin.



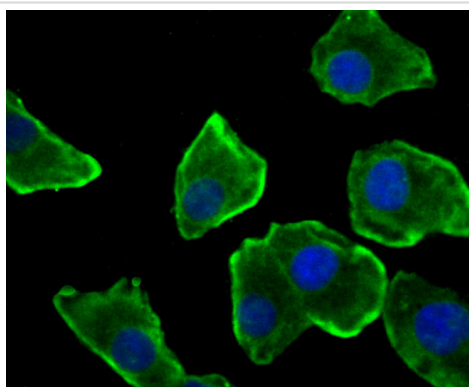
Immunohistochemical analysis of paraffin-embedded human colon cancer tissue using anti-Nesprin 1 antibody. Counter stained with hematoxylin.



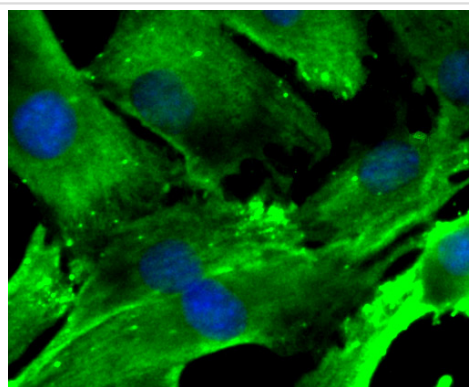
Immunohistochemical analysis of paraffin-embedded human kidney tissue using anti-Nesprin 1 antibody. Counter stained with hematoxylin.



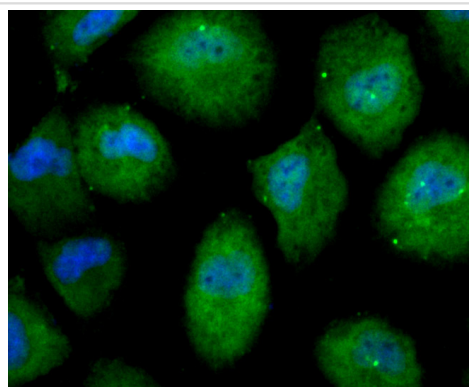
Immunohistochemical analysis of paraffin-embedded mouse fallopian tubes tissue using anti-Nesprin 1 antibody. Counter stained with hematoxylin.



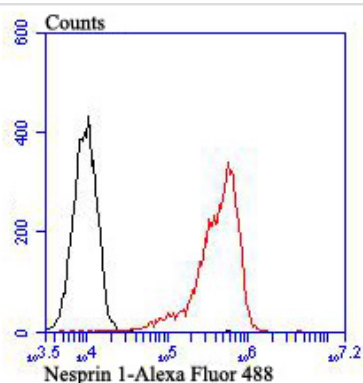
ICC staining Nesprin 1 in A549 cells (green). The nuclear counter stain is DAPI (blue). Cells were fixed in paraformaldehyde, permeabilised with 0.25% Triton X100/PBS.



ICC staining Nesprin 1 in C2C12 cells (green). The nuclear counter stain is DAPI (blue). Cells were fixed in paraformaldehyde, permeabilised with 0.25% Triton X100/PBS.



ICC staining Nesprin 1 in HUVEC cells (green). The nuclear counter stain is DAPI (blue). Cells were fixed in paraformaldehyde, permeabilised with 0.25% Triton X100/PBS.



Flow cytometric analysis of Daudi cells with Nesprin 1 antibody at 1/100 dilution (red) compared with an unlabelled control (cells without incubation with primary antibody; black).Alexa Fluor 488-conjugated goat anti-rabbit IgG was used as the secondary antibody.

## Background

Multi-isomeric modular protein which forms a linking network between organelles and the actin cytoskeleton to maintain the subcellular spatial organization. As a component of the LINC (Linker of Nucleoskeleton and Cytoskeleton) complex involved in the connection between the nuclear lamina and the cytoskeleton. The nucleocytoplasmic interactions established by the LINC complex play an important role in the transmission of mechanical forces across the nuclear envelope and in nuclear movement and positioning. May be involved in nucleus-centrosome attachment and nuclear migration in neural progenitors implicating LINC complex association with SUN1/2 and probably association with cytoplasmic dynein-dynactin motor complexes; SYNE1 and SYNE2 may act redundantly. Required for centrosome migration to the apical cell surface during early ciliogenesis. May be involved in nuclear remodeling during sperm head formation in spermatogenesis; a probable SUN3:SYNE1/KASH1 LINC complex may tether

spermatid nuclei to posterior cytoskeletal structures such as the manchette.

---

Note: This product is for in vitro research use only