

## Phospho-alpha Synuclein (S129) Rabbit mAb

Catalog No: #13434



Package Size: #13434-1 50ul #13434-2 100ul

Orders: [order@signalwayantibody.com](mailto:order@signalwayantibody.com)Support: [tech@signalwayantibody.com](mailto:tech@signalwayantibody.com)

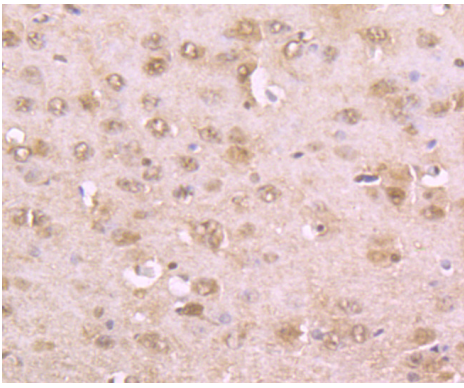
## Description

Product Name	Phospho-alpha Synuclein (S129) Rabbit mAb
Host Species	Rabbit
Clonality	Monoclonal
Clone No.	JB22-44
Purification	ProA affinity purified
Applications	WB,ICC,IF,IHC
Species Reactivity	Hu, Ms, Rt
Immunogen Description	Synthetic phospho-peptide corresponding to residues surrounding Ser129 of human alpha Synuclein.
Other Names	Alpha synuclein antibody Alpha-synuclein antibody Alpha-synuclein, isoform NACP140 antibody alphaSYN antibody MGC105443 antibody MGC110988 antibody MGC127560 antibody MGC64356 antibody NACP antibody Non A beta component of AD amyloid antibody Non A4 component of amyloid antibody Non A4 component of amyloid precursor antibody Non-A beta component of AD amyloid antibody Non-A-beta component of alzheimers disease amyloid , precursor of antibody Non-A4 component of amyloid precursor antibody Non-A4 component of amyloid, precursor of antibody OTTHUMP00000218549 antibody OTTHUMP00000218551 antibody OTTHUMP00000218552 antibody OTTHUMP00000218553 antibody OTTHUMP00000218554 antibody PARK 1 antibody PARK 4 antibody PARK1 antibody PARK4 antibody Parkinson disease (autosomal dominant, Lewy body) 4 antibody Parkinson disease familial 1 antibody SNCA antibody Snca synuclein, alpha (non A4 component of amyloid precursor) antibody SYN antibody Synuclein alpha antibody Synuclein alpha 140 antibody Synuclein, alpha (non A4 component of amyloid precursor) antibody SYUA_HUMAN antibody
Accession No.	Swiss-Prot#:P37840
Uniprot	P37840
GeneID	6622;
Calculated MW	14 kDa
Formulation	1*TBS (pH7.4), 1%BSA, 40%Glycerol. Preservative: 0.05% Sodium Azide.
Storage	Store at -20°C

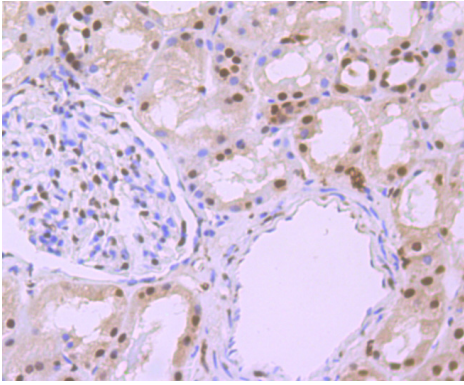
## Application Details

IHC: 1:50-1:200 ICC: 1:50-1:200

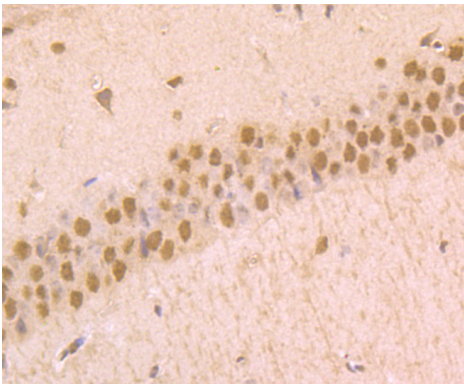
## Images



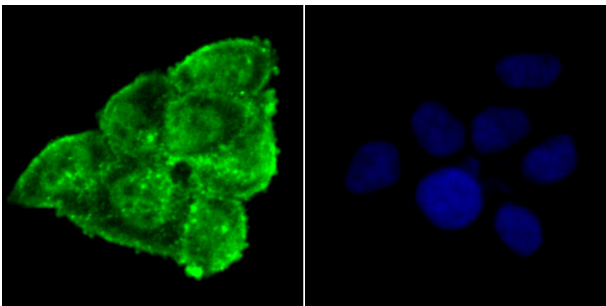
Immunohistochemical analysis of paraffin-embedded rat brain tissue using anti-Phospho-alpha Synuclein (S129) antibody. Counter stained with hematoxylin.



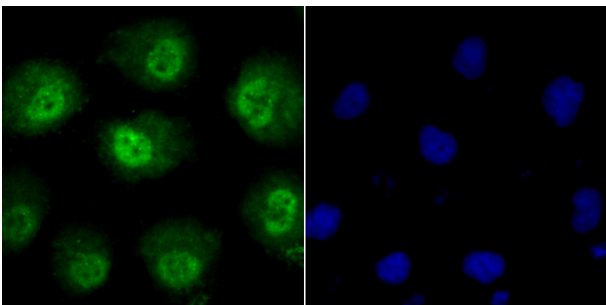
Immunohistochemical analysis of paraffin-embedded human kidney tissue using anti-Phospho-alpha Synuclein (S129) antibody. Counter stained with hematoxylin.



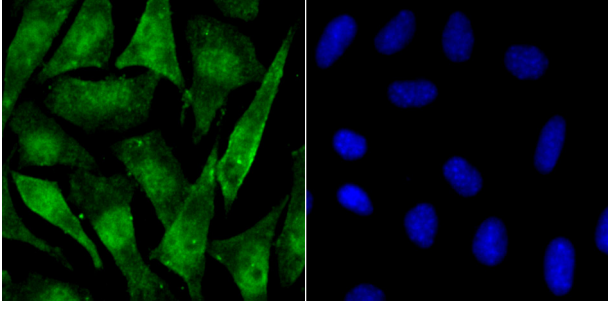
Immunohistochemical analysis of paraffin-embedded mouse brain tissue using anti-Phospho-alpha Synuclein (S129) antibody. Counter stained with hematoxylin.



ICC staining Phospho-alpha Synuclein (S129) in HeLa cells (green). The nuclear counter stain is DAPI (blue). Cells were fixed in paraformaldehyde, permeabilised with 0.25% Triton X100/PBS.



ICC staining Phospho-alpha Synuclein (S129) in HUVEC cells (green). The nuclear counter stain is DAPI (blue). Cells were fixed in paraformaldehyde, permeabilised with 0.25% Triton X100/PBS.



ICC staining Phospho-alpha Synuclein (S129) in SH-SY-5Y cells (green). The nuclear counter stain is DAPI (blue). Cells were fixed in paraformaldehyde, permeabilised with 0.25% Triton X100/PBS.

## Background

The synuclein family members, including  $\alpha$ -synuclein (also designated NACP for non- $\beta$ -Amyloid component) and  $\beta$ -synuclein, are predominantly expressed in the brain and are speculated to be involved in synaptic regulation and neuronal plasticity.  $\alpha$ -synuclein is localized to neuronal cell bodies and synapses.  $\alpha$ -synuclein was first identified as a component of Alzheimer's disease amyloid plaques. Abnormal platelet function in Alzheimer's disease has been demonstrated. During megakaryocytic differentiation  $\alpha$ -synuclein has been found to be upregulated, while  $\beta$ -synuclein is downregulated, indicating that coordinate expression of synucleins may be important during hematopoietic cell differentiation. A mutant form of  $\alpha$ -synuclein has been found in patients with early onset Parkinson's disease.

## References

Note: This product is for in vitro research use only