

Calsequestrin 1 Rabbit mAb

Catalog No: #49821

Package Size: #49821-1 50ul #49821-2 100ul

Orders: order@signalwayantibody.comSupport: tech@signalwayantibody.com

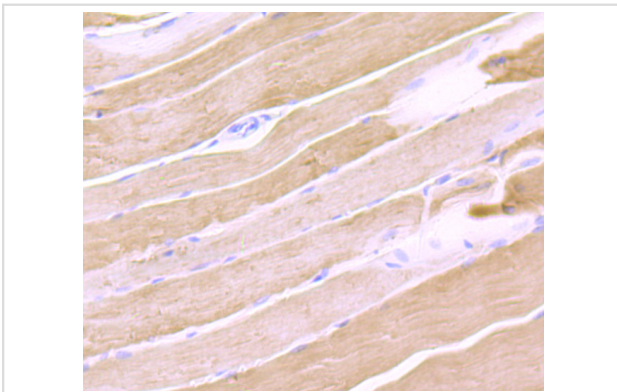
Description

Product Name	Calsequestrin 1 Rabbit mAb
Host Species	Recombinant Rabbit
Clonality	Monoclonal antibody
Clone No.	JB57-37
Purification	ProA affinity purified
Applications	WB,IHC,FC
Species Reactivity	Hu, Ms, Rt
Immunogen Description	Recombinant protein
Other Names	Calmitin antibody Calmitine antibody Calsequestrin 1 (fast twitch, skeletal muscle) antibody Calsequestrin antibody Calsequestrin, cell antibody Calsequestrin, skeletal muscle isoform antibody Calsequestrin-1 antibody CASQ antibody Casq1 antibody CASQ1_HUMAN antibody PDIB1 antibody skeletal muscle isoform antibody
Accession No.	Swiss-Prot#:P31415
Uniprot	P31415
GeneID	844;
Calculated MW	45 kDa
Formulation	1*TBS (pH7.4), 1%BSA, 40%Glycerol. Preservative: 0.05% Sodium Azide.
Storage	Store at -20°C

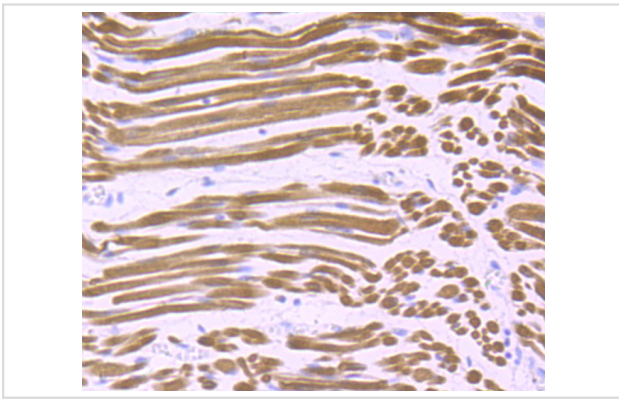
Application Details

WB: 1:500 IHC: 1:50-1:200 FC: 1:50-1:100

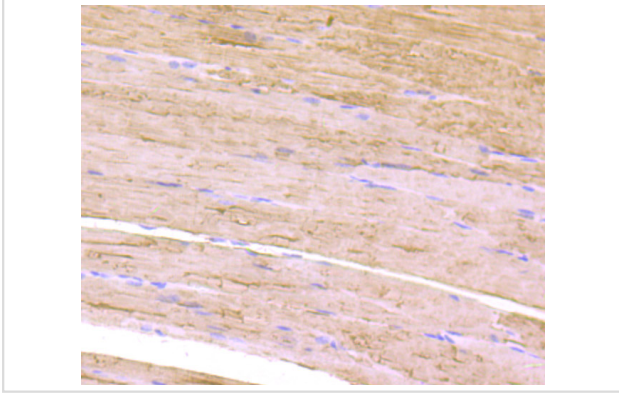
Images



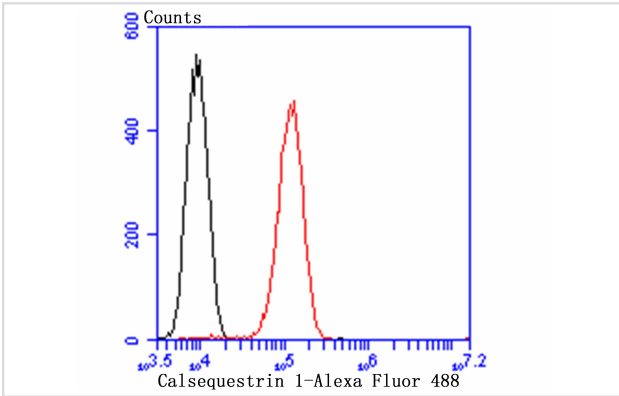
Immunohistochemical analysis of paraffin-embedded rat skeletal muscle tissue using anti-Calsequestrin 1 antibody. Counter stained with hematoxylin.



Immunohistochemical analysis of paraffin-embedded human fetal skeletal muscle tissue using anti-Calsequestrin 1 antibody. Counter stained with hematoxylin.



Immunohistochemical analysis of paraffin-embedded mouse skeletal muscle tissue using anti-Calsequestrin 1 antibody. Counter stained with hematoxylin.



Flow cytometric analysis of C2C12 cells with Calsequestrin 1 antibody at 1/100 dilution (red) compared with an unlabelled control (cells without incubation with primary antibody; black). Alexa Fluor 488-conjugated goat anti rabbit IgG was used as the secondary antibody.

Background

Calsequestrin (CS, also known as CSQ) is the major calcium-binding protein of cardiac and skeletal muscle whose function is to sequester calcium in the lumen of the sarcoplasmic reticulum (SR). In mammals, there are two forms of this protein, calsequestrin 1 and calsequestrin 2, which encode fast-twitch skeletal muscle and cardiac calsequestrin, respectively. Calsequestrin 1, also known as Calmitin, is located in the terminal cisternae luminal spaces of the SR of fast skeletal muscle cells. Calsequestrin 2 is present in terminal cisternae luminal spaces of the SR of both cardiac and slow skeletal muscle cells. In addition, calsequestrin regulates the ryanodine receptor signaling (RyR) through Triadin and Junctin.

References

Note: This product is for in vitro research use only