

Galectin 8 Rabbit mAb

Catalog No: #49837

Package Size: #49837-1 50ul #49837-2 100ul

Orders: order@signalwayantibody.com

Support: tech@signalwayantibody.com

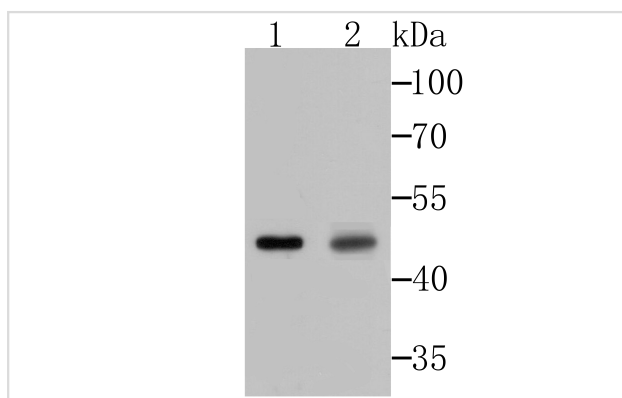
Description

Product Name	Galectin 8 Rabbit mAb
Host Species	Recombinant Rabbit
Clonality	Monoclonal antibody
Clone No.	JB85-35
Purification	ProA affinity purified
Applications	WB,ICC,IF,IHC,FC,IP
Species Reactivity	Hu, Ms, Rt
Immunogen Description	Recombinant protein
Other Names	Gal 8 antibody Gal-8 antibody Gal8 antibody Galectin-8 antibody galectin-8g antibody Lectin galactoside binding soluble 8 antibody LEG8_HUMAN antibody LGAL S8 antibody Lgals8 antibody PCTA 1 antibody PCTA-1 antibody PCTA1 antibody Po66 carbohydrate binding protein antibody Po66 carbohydrate-binding protein antibody Po66 CBP antibody Po66-CBP antibody Prostate carcinoma tumor antigen 1 antibody
Accession No.	Swiss-Prot#:O00214
Uniprot	O00214
GeneID	3964;
Calculated MW	40 kDa
Formulation	1*TBS (pH7.4), 1%BSA, 40%Glycerol. Preservative: 0.05% Sodium Azide.
Storage	Store at -20°C

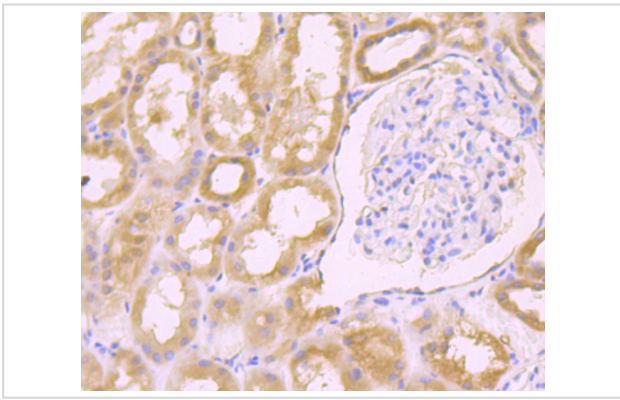
Application Details

WB: 1:500-1:1,000 IHC: 1:50-1:200 ICC/IF: 1:400-1:800FC: 1:50-1:100

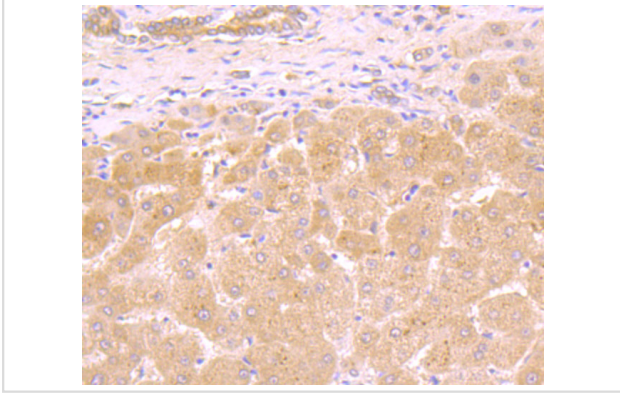
Images



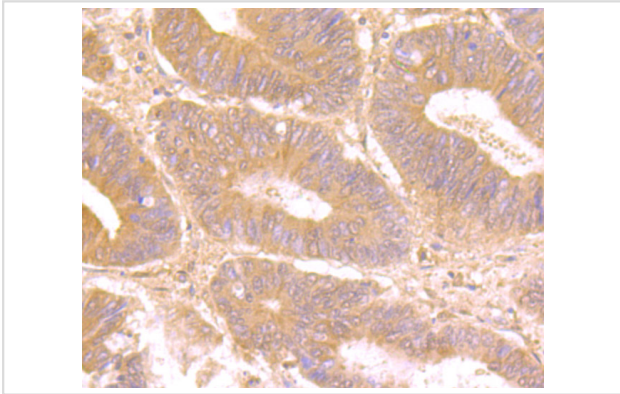
Western blot analysis of Galectin 8 on mouse testis and rat testis tissue lysates using anti-Galectin 8 antibody at 1/500 dilution.



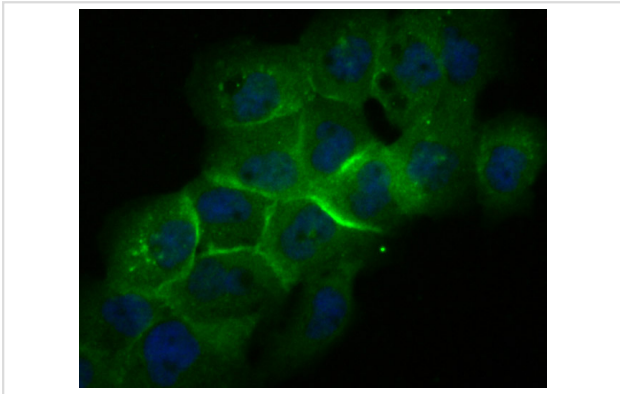
Immunohistochemical analysis of paraffin-embedded human kidney tissue using anti-Galectin 8 antibody. Counter stained with hematoxylin.



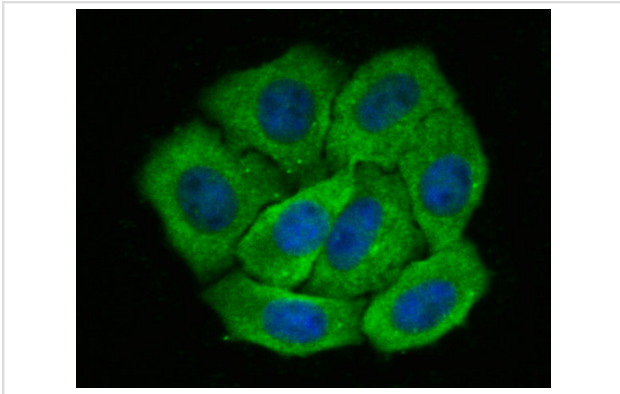
Immunohistochemical analysis of paraffin-embedded human liver tissue using anti-Galectin 8 antibody. Counter stained with hematoxylin.



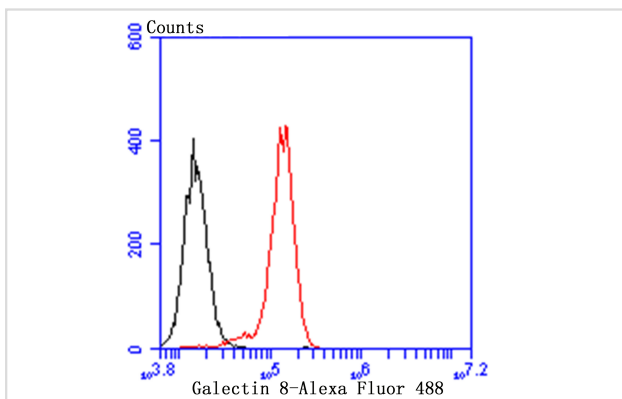
Immunohistochemical analysis of paraffin-embedded human colon cancer tissue using anti-Galectin 8 antibody. Counter stained with hematoxylin.



ICC staining Galectin 8 in A431 cells (green). The nuclear counter stain is DAPI (blue). Cells were fixed in paraformaldehyde, permeabilised with 0.25% Triton X100/PBS.



ICC staining Galectin 8 in HepG2 cells (green). The nuclear counter stain is DAPI (blue). Cells were fixed in paraformaldehyde, permeabilised with 0.25% Triton X100/PBS.



Flow cytometric analysis of PC-3M cells with Galectin 8 antibody at 1/100 dilution (red) compared with an unlabelled control (cells without incubation with primary antibody; black). Alexa Fluor 488-conjugated goat anti-rabbit IgG was used as the secondary antibody.

Background

Several proteins have been identified as specific markers of prostate cancer, and they may be useful as diagnostic indicators. PSA, prostate specific antigen, is the classical indicator for transformed prostate tissue; however, in addition to being up-regulated in prostate cancer, PSA is also up-regulated in non-malignant conditions, such as benign prostatic hyperplasia prostate. Galectin-8, also known as prostate-specific membrane antigen (PCTA-1), is an additional prostate-specific antigen that is overexpressed only in malignant tumors and therefore is a more specific identifier of malignancies. It is a member of the galectin gene family which mediates both cell-cell and cell-matrix interactions in a manner similar to the selectin subgroup of C-type lectins.

References

Note: This product is for in vitro research use only