

## CXCR5 Rabbit mAb

Catalog No: #49855



Package Size: #49855-1 50ul #49855-2 100ul

Orders: [order@signalwayantibody.com](mailto:order@signalwayantibody.com)Support: [tech@signalwayantibody.com](mailto:tech@signalwayantibody.com)

## Description

Product Name	CXCR5 Rabbit mAb
Clone No.	JB11-40
Purification	Affinity-chromatography
Applications	WB,IHC,FC
Species Reactivity	Hu, Ms, Rt
Immunogen Description	A synthesized peptide derived from human CXCR5
Other Names	BLR 1 antibody BLR1 antibody Burkitt lymphoma receptor 1 antibody Burkitt lymphoma receptor 1 GTP binding protein antibody Burkitt lymphoma receptor 1, GTP binding protein (chemokine (C-X-C motif) receptor 5) antibody C X C chemokine receptor type 5 antibody C-X-C chemokine receptor type 5 antibody CD 185 antibody CD185 antibody CD185 antigen antibody Chemokine (C-X-C motif) receptor 5 antibody Chemokine C X C motif receptor 5 antibody Chemokine CXC motif receptor 5 antibody Chemokine receptor 5 antibody CXC chemokine receptor type 5 antibody CXC R5 antibody CXC-R5 antibody CXCR 5 antibody CXCR-5 antibody Cxcr5 antibody CXCR5_HUMAN antibody MDR 15 antibody MDR-15 antibody MDR15 antibody MGC117347 antibody Monocyte derived receptor 15 antibody Monocyte-derived receptor 15 antibody
Accession No.	Swiss-Prot#:P32302
Uniprot	P32302
GeneID	643;
Calculated MW	42 kDa
Formulation	Rabbit IgG in 10mM phosphate buffered saline , pH 7.4, 150mM sodium chloride, 0.05% BSA, 0.02% sodium azide and 50% glycerol.
Storage	Store at +4°C for short term. Store at -20°C for long term. Avoid freeze/thaw cycle.

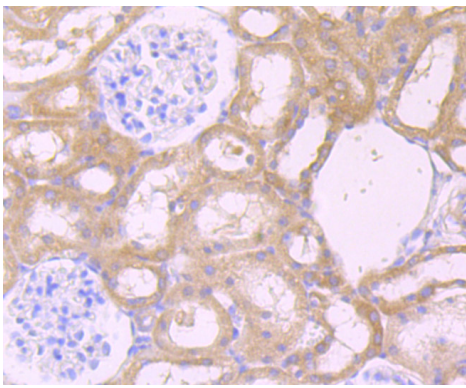
## Application Details

WB: 1:500-1:1,000

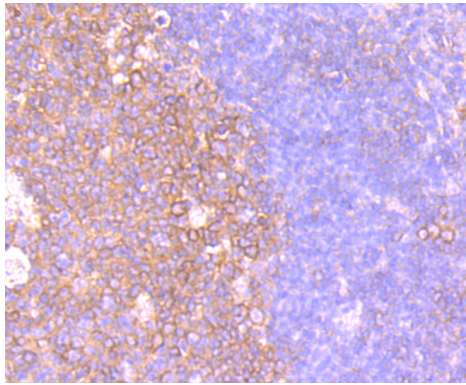
IHC: 1:50-1:200

FC: 1:50-1:100

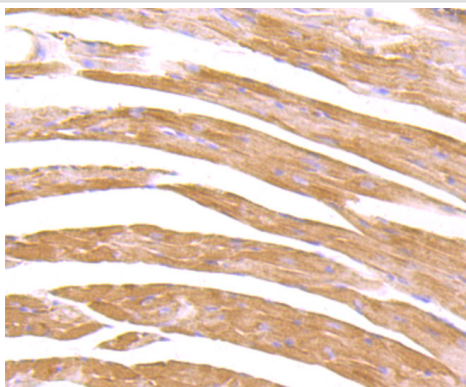
## Images



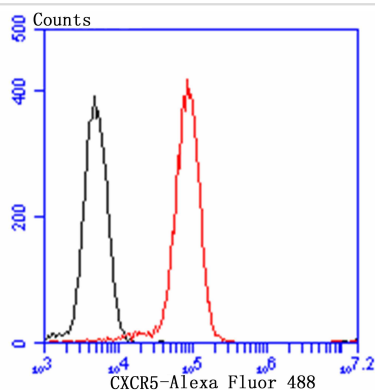
Immunohistochemical analysis of paraffin-embedded rat kidney tissue using anti-CXCR5 antibody. Counter stained with hematoxylin.



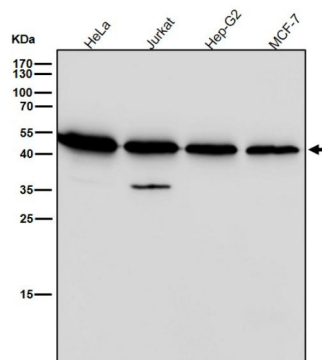
Immunohistochemical analysis of paraffin-embedded human tonsil tissue using anti-CXCR5 antibody. Counter stained with hematoxylin.



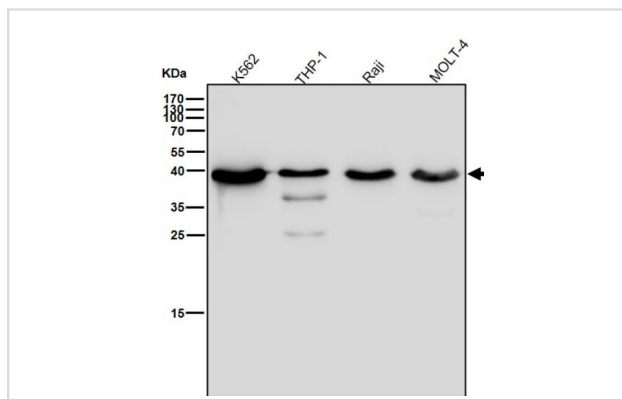
Immunohistochemical analysis of paraffin-embedded mouse heart tissue using anti-CXCR5 antibody. Counter stained with hematoxylin.



Flow cytometric analysis of Daudi cells with CXCR5 antibody at 1/100 dilution (red) compared with an unlabelled control (cells without incubation with primary antibody; black). Alexa Fluor 488-conjugated goat anti-rabbit IgG was used as the secondary antibody.



All lanes use the Antibody at 1:1K dilution for 1 hour at room temperature.



All lanes use the Antibody at 1:1K dilution for 1 hour at room temperature.

## Background

Burkitt's lymphoma receptor 1 (Blr1) is a lymphocyte specific chemokine receptor expressed at low levels in secondary lymphoid tissues and in defined structures of the cerebellum. The G-protein coupled receptor has significant homology to other chemokine receptors. Stimulation of Blr1 by its ligand, B-lymphocyte chemo-attractant (BLC) results in an influx of calcium into the cell and the chemotaxis of the cell. Blr1 is required for B-cell migration into splenic and Peyer's patch follicles. BLC expression in Peyer's patches is highest in germinal centers, where B cells undergo somatic mutation and affinity maturation.

Note: This product is for in vitro research use only