

SSX Polyclonal Antibody

Catalog No: #41594

Package Size: #41594-1 50ul #41594-2 100ul

Orders: order@signalwayantibody.com

Support: tech@signalwayantibody.com

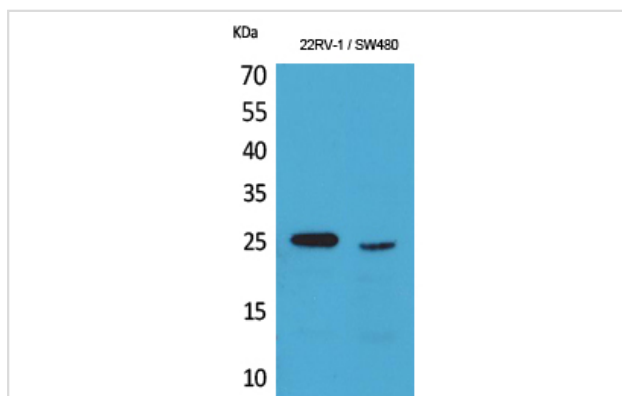
Description

| | |
|-----------------------|---|
| Product Name | SSX Polyclonal Antibody |
| Host Species | Rabbit |
| Clonality | Polyclonal |
| Purification | The antibody was affinity-purified from rabbit antiserum by affinity-chromatography using epitope-specific immunogen. |
| Applications | WB |
| Species Reactivity | Hu |
| Specificity | SSX Polyclonal Antibody detects endogenous levels of SSX protein. |
| Immunogen Type | peptide |
| Immunogen Description | Synthesized peptide derived from the C-terminal region of human SSX. |
| Target Name | SSX |
| Other Names | SSX1; Protein SSX1; Cancer/testis antigen 5.1; CT5.1; Synovial sarcoma, X breakpoint 1; SSX2; SSX2A; SSX2B; Protein SSX2; Cancer/testis antigen 5.2; CT5.2; Synovial sarcoma, X breakpoint 2; Tumor antigen HOM-MEL-40; SSX3; Protein SSX3; |
| Accession No. | Swiss-Prot: Q16384NCBI Gene ID: 6756 |
| Uniprot | Q16384 |
| GeneID | 6756; |
| SDS-PAGE MW | 25kd |
| Concentration | 1mg/ml |
| Formulation | Liquid in PBS containing 50% glycerol, 0.5% BSA and 0.02% sodium azide. |
| Storage | Store at -20°C/1 year |

Application Details

Western Blot: 1/500 - 1/2000.

Images



Western Blot analysis of 22RV-1 SW480 cells using SSX Polyclonal Antibody

Note: This product is for in vitro research use only