

CD46 Rabbit mAb

Catalog No: #49871



Package Size: #49871-1 50ul #49871-2 100ul

Orders: order@signalwayantibody.com

Support: tech@signalwayantibody.com

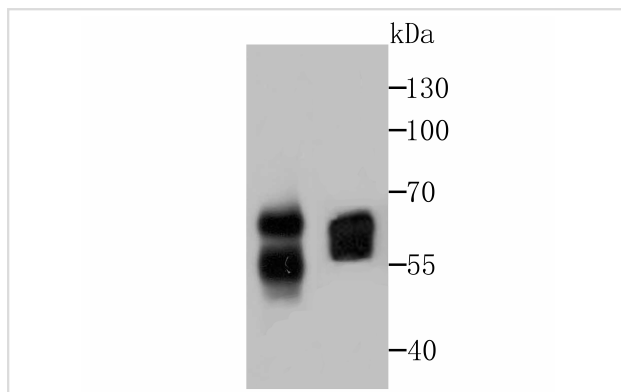
Description

Product Name	CD46 Rabbit mAb
Host Species	Recombinant Rabbit
Clonality	Monoclonal antibody
Clone No.	JB25-49
Purification	ProA affinity purified
Applications	WB, ICC, IHC
Species Reactivity	Hu, Rt
Immunogen Description	Recombinant protein
Other Names	AHUS2 antibody Antigen defined by monoclonal antibody TRA 2 10 antibody Antigen identified by monoclonal antibody TRA 2 10 antibody CD46 antibody CD46 antigen antibody CD46 antigen complement regulatory protein antibody CD46 molecule antibody CD46 molecule complement regulatory protein antibody Complement membrane cofactor protein antibody MCP antibody MCP_HUMAN antibody Measles virus receptor antibody membrane cofactor protein (CD46, trophoblast-lymphocyte cross-reactive antigen) antibody Membrane cofactor protein antibody MGC26544 antibody MIC10 antibody TLX antibody TRA2.10 antibody Trophoblast leucocyte common antigen antibody Trophoblast leukocyte common antigen antibody Trophoblast lymphocyte cross reactive antigen antibody
Accession No.	Swiss-Prot#:P15529
Uniprot	P15529
GeneID	4179;
Calculated MW	55 kDa
Formulation	1*TBS (pH7.4), 1%BSA, 40%Glycerol. Preservative: 0.05% Sodium Azide.
Storage	Store at -20°C

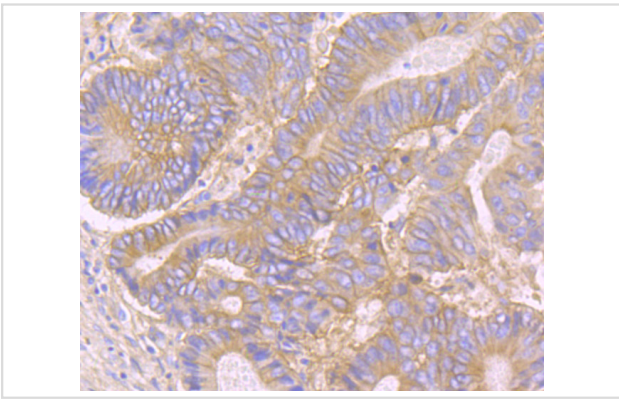
Application Details

WB: 1:1,000-5,000 IHC: 1:50-1:200 ICC: 1:50-1:200

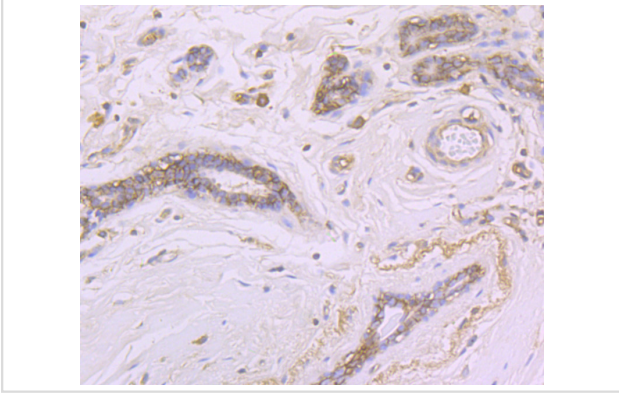
Images



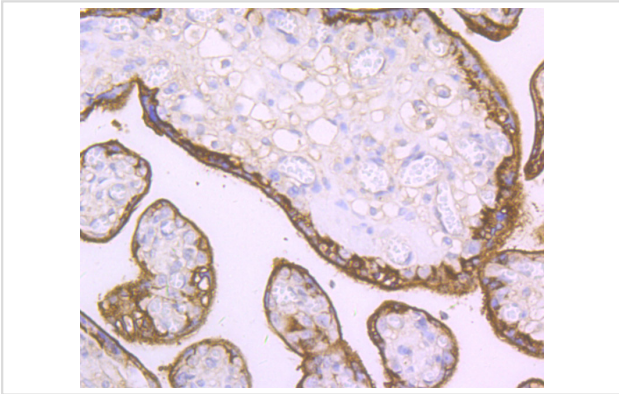
Western blot analysis of CD46 on Siha and PC-3M cell lysates using anti-CD46 antibody at 1/1,000 dilution.



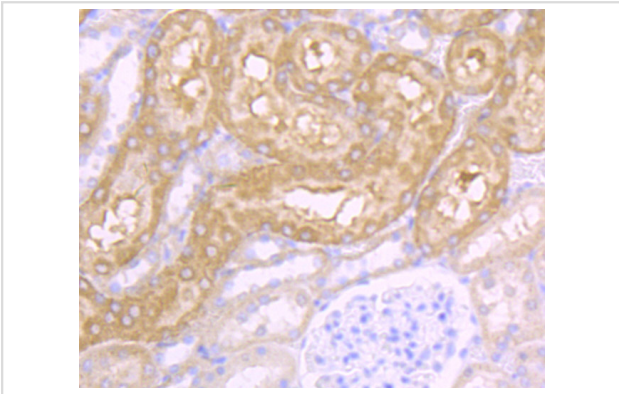
Immunohistochemical analysis of paraffin-embedded human colon cancer tissue using anti-CD46 antibody. Counter stained with hematoxylin.



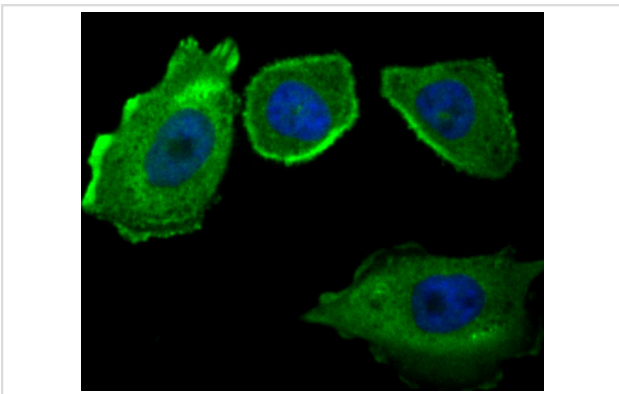
Immunohistochemical analysis of paraffin-embedded human breast tissue using anti-CD46 antibody. Counter stained with hematoxylin.



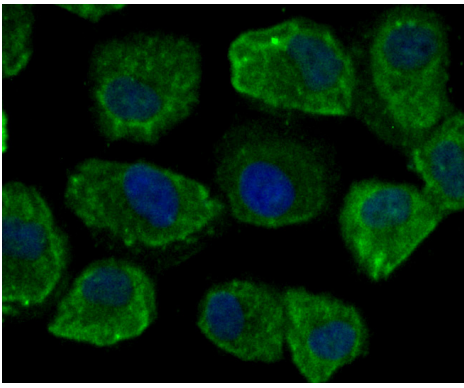
Immunohistochemical analysis of paraffin-embedded human placenta tissue using anti-CD46 antibody. Counter stained with hematoxylin.



Immunohistochemical analysis of paraffin-embedded rat kidney tissue using anti-CD46 antibody. Counter stained with hematoxylin.



ICC staining CD46 in PC-3M cells (green). The nuclear counter stain is DAPI (blue). Cells were fixed in paraformaldehyde, permeabilised with 0.25% Triton X100/PBS.



ICC staining CD46 in HUVEC cells (green). The nuclear counter stain is DAPI (blue). Cells were fixed in paraformaldehyde, permeabilised with 0.25% Triton X100/PBS.

Background

CD46, also called membrane cofactor protein (MCP), is a transmembrane glycoprotein that exists as a non-disulfide-linked dimer. CD46 regulates the complement cascade by inhibiting C3b and C4b deposited on self tissue. CD46 is a cofactor that binds to C3b and C4b, allowing their degradation by a plasma serine protease called factor I. This function resides in the complement control protein repeats (CCPs), with CCP1-4 essential for regulation. CD46 is widely distributed on thymocytes, T cells, B cells, monocytes, granulocytes, NK cells, platelets, endothelial cells, epithelial cells, fibroblasts, placenta and sperm, but not on erythrocytes. It is the major high affinity receptor for measles virus and human herpes virus. Mouse cells ubiquitously express CRRY, which is a functional ortholog of human decay-accelerating factor (DAF; CD55) and membrane cofactor protein (MCP; CD46).

References

Note: This product is for in vitro research use only