

Glucose 6 phosphate isomerase Rabbit mAb

Catalog No: #49876



Package Size: #49876-1 50ul #49876-2 100ul

Orders: order@signalwayantibody.com
Support: tech@signalwayantibody.com

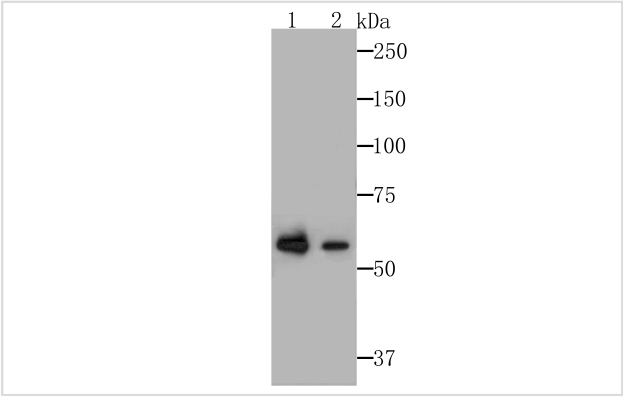
Description

| | |
|-----------------------|---|
| Product Name | Glucose 6 phosphate isomerase Rabbit mAb |
| Host Species | Recombinant Rabbit |
| Clonality | Monoclonal antibody |
| Clone No. | JG33-86 |
| Purification | ProA affinity purified |
| Applications | WB,ICC,IF,IHC,FC |
| Species Reactivity | Hu |
| Immunogen Description | Recombinant protein corresponding to human Glucose 6 phosphate isomerase 300-500aa. |
| Other Names | AMF antibody Aurocrine motility factor antibody Autocrine motility factor antibody DKFZp686C13233 antibody EC 5.3.1.9 antibody G6PI_HUMAN antibody Glucose phosphate isomerase antibody Glucose-6-phosphate isomerase antibody GNPI antibody GPI antibody Gpi1 antibody Hexose monophosphate isomerase antibody Hexosephosphate isomerase antibody Neuroleukin antibody NLK antibody Oxoisomerase antibody PGI antibody PHI antibody Phosphoglucose isomerase antibody Phosphohexomutase antibody Phosphohexose isomerase antibody Phosphosaccharomutase antibody SA 36 antibody SA-36 antibody SA36 antibody |
| Accession No. | Swiss-Prot#:P06744 |
| Uniprot | P06744 |
| GeneID | 2821; |
| Calculated MW | 63 kDa |
| Formulation | 1*TBS (pH7.4), 1%BSA, 40%Glycerol. Preservative: 0.05% Sodium Azide. |
| Storage | Store at -20°C |

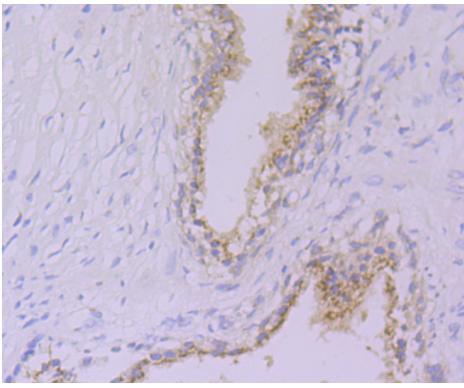
Application Details

WB: 1:500-1:1,000 IHC: 1:50-1:200 ICC: 1:50-1:200FC: 1:50-1:100

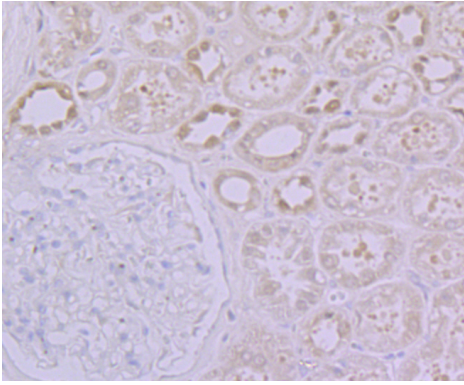
Images



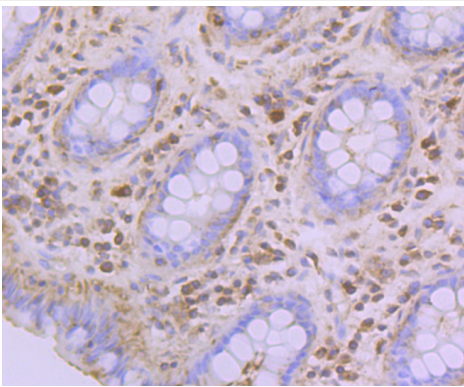
Western blot analysis of Glucose 6 phosphate isomerase on A549 and HepG2 cells lysates using anti-Glucose 6 phosphate isomerase antibody at 1/1,000 dilution.



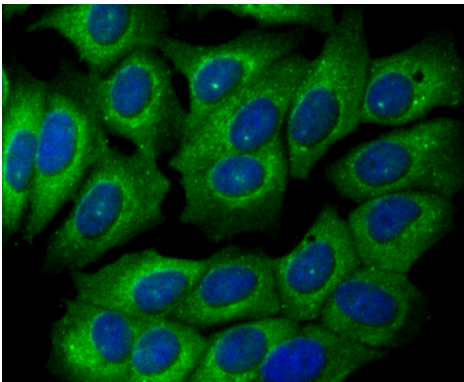
Immunohistochemical analysis of paraffin-embedded human prostate tissue using anti-Glucose 6 phosphate isomerase antibody. Counter stained with hematoxylin.



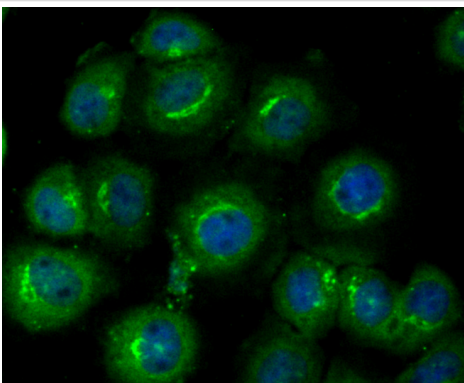
Immunohistochemical analysis of paraffin-embedded human kidney tissue using anti-Glucose 6 phosphate isomerase antibody. Counter stained with hematoxylin.



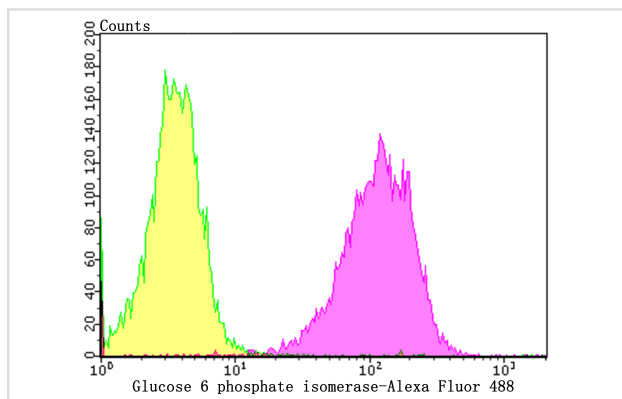
Immunohistochemical analysis of paraffin-embedded human colon tissue using anti-Glucose 6 phosphate isomerase antibody. Counter stained with hematoxylin.



ICC staining Glucose 6 phosphate isomerase in MCF-7 cells (green). The nuclear counter stain is DAPI (blue). Cells were fixed in paraformaldehyde, permeabilised with 0.25% Triton X100/PBS.



ICC staining Glucose 6 phosphate isomerase in LO2 cells (green). The nuclear counter stain is DAPI (blue). Cells were fixed in paraformaldehyde, permeabilised with 0.25% Triton X100/PBS.



Flow cytometric analysis of A549 cells with Glucose 6 phosphate isomerase antibody at 1/100 dilution (purple) compared with an unlabelled control (cells without incubation with primary antibody; yellow). Alexa Fluor 488-conjugated goat anti-rabbit IgG was used as the secondary antibody.

Background

Glucose-6-phosphate isomerase (GPI) has many other names, including Phosphohexose isomerase (PHI), Neuroleukin (NLK) and Spermantigen-36 (SA-36). GPI is a cytoplasmic homodimer belonging to the GPI family. It is a neurotrophic factor for spinal and sensory neurons and is involved in glycolysis and gluconeogenesis. Defects or mutations in GPI can cause hereditary nonspherocytic hemolytic anemia (HA), hydrops fetalis, immediate neonatal death and neurological impairment.

References

Note: This product is for in vitro research use only